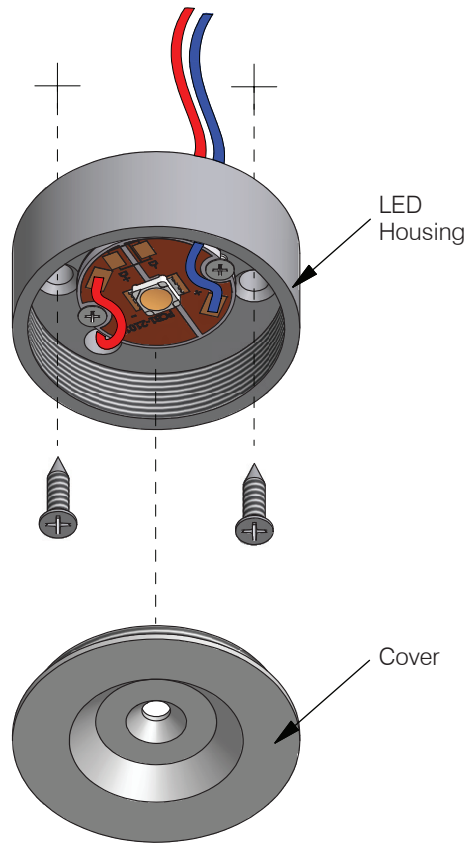


L51

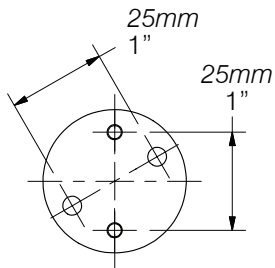
Installation Instructions

- 1** Drill holes for wiring and pull full length of leads through holes.
- 2** Connect fixture wires to low voltage wiring (remote LED driver 350mA or 700mA constant current).
- 3** Unthread cover from LED housing. Attach LED housing to shelf, cabinetry or millwork with screws only.
- 4** Thread cover into LED housing.



CAUTION

- Read all instructions.
- **WARNING: RISK OF FIRE OR ELECTRICAL SHOCK:** Do not make or alter any openings in the compartment of wiring or electrical components during installation. Do not alter or add ballasts, or any other electrical components.
- Installation and use of this fixture mounting assembly requires a person familiar with the construction and operation of luminaire electrical systems and the hazards involved, if not qualified, do not attempt installation.
- Turn off power before installation.
- 350mA or 700 mA constant current driver only.
- Mount fixture with screws only. Do not use glue or adhesive.
- Do not spray water on fixture during cleaning. Avoid using detergents with hand softeners, anti-bacterial agents, glass cleaners or acrylic cleaning products.
- **KEEP THESE INSTALLATION**



Parts

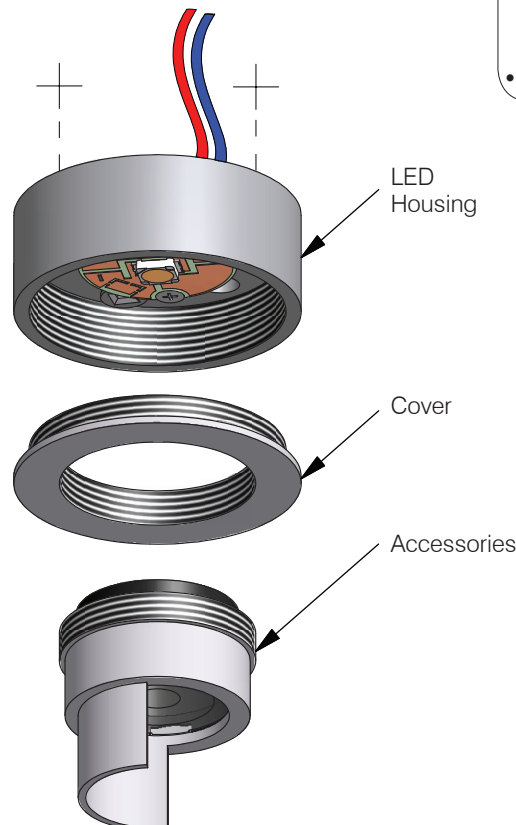
- | | |
|---|---|
| • LED unit | 1 |
| • Cross countersunk screws (#4 screw - 3/8" included) | 2 |

Tools

- Phillips screwdriver *not included*

Maintenance

Clean using a soft cloth.



M M^PLIGHTING®

t1.877.708.1184 f604.708.1185 www.mplighting.com
16 West 4th Avenue, Vancouver BC V5Y 1G3, Canada