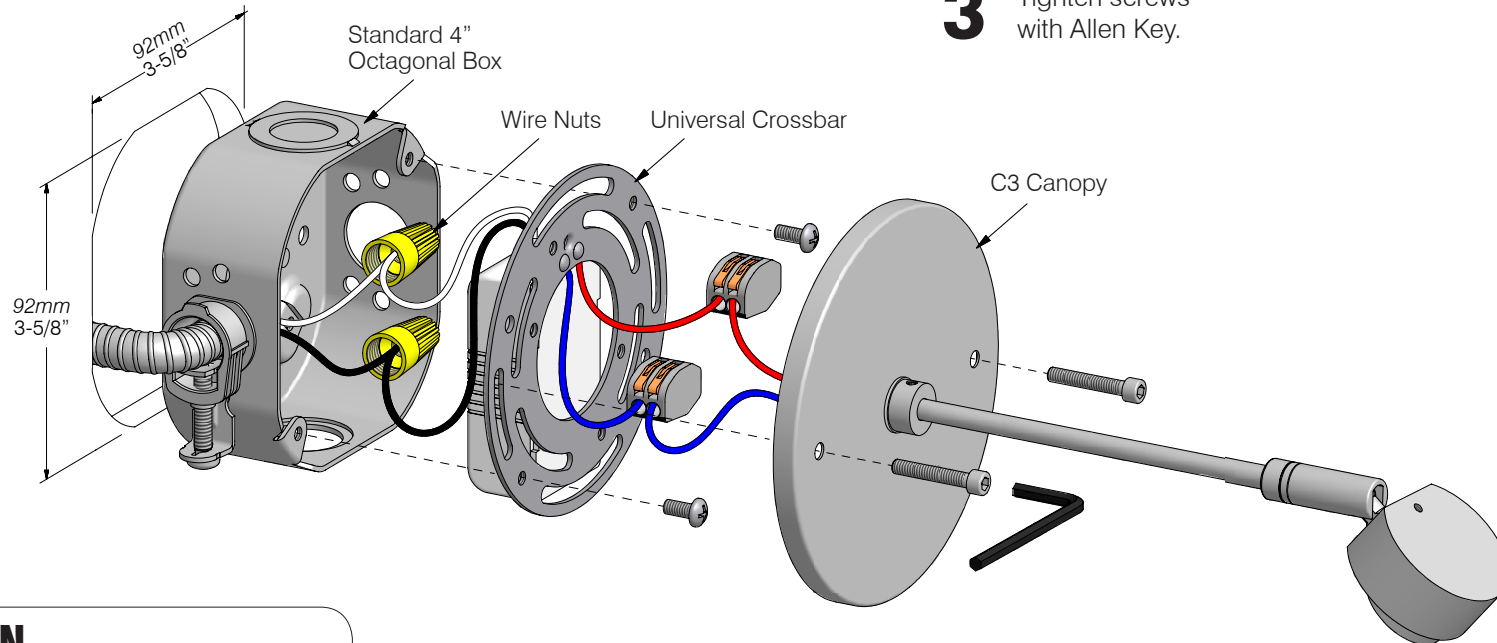


1 Connect driver input wires to supply then fit into electrical box.

2 Align canopy and crossbar to electrical box.

3 Tighten screws with Allen Key.



! CAUTION

• Read all instructions.

- **WARNING: RISK OF FIRE OR ELECTRICAL SHOCK:** Do not make or alter any openings in the compartment of wiring or electrical components during installation. Do not alter or add ballasts, or any other electrical components.
- Installation and use of this fixture mounting assembly requires a person familiar with the construction and operation of luminaire electrical systems and the hazards involved, if not qualified, do not attempt installation.
- Turn off power before installation.
- Connect to 350mA constant current LED driver only.
- Do not spray water on fixture during cleaning. Avoid using detergents with hand softeners, anti-bacterial agents, glass cleaners or acrylic cleaning products.
- **KEEP THESE INSTALLATION INSTRUCTIONS.**

Parts

- LED unit Qty. 1
- Hex socket head screws 2
- Universal crossbar 1
- LED driver 3W 350mA *not included*

Tools

- Allen key *included*

LED3W350

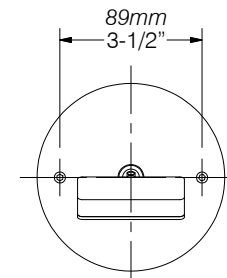
AC Input Voltage: 100~240V, 50/60Hz
DC Output Current: 350mA Constant

Remote Driver Option

Connect fixture wires directly to low voltage box leads.

Maintenance

Use a soft cloth to clean and remove any fingerprints.



L81W3
Installation Instructions