

L182

Application Modular bottle rack system for restaurants, bars, and wine cellars with 100% no UV and no heat.

Mounting Can be mounted directly to wall or can be mounted freely from ceiling to floor. Mounting bracket (not included) must be used for Free standing mounting option

Electrical 1W, 350mA LED per arm.

LED Input Voltage: 4V DC / 12VAC

Power Supply: (not included)

DC - Powered by remote 350mA DC driver. Recommended LED8W350L. Dimmable with dimming controller, 0-10V. Consult factory.

AC - Powered by remote 120V primary, 12V secondary magnetic transformer. Recommended 12V AC magnetic transformer (not included). Consult factory for dimming option.

*See website for recommended drivers

*Remote emergency driver / inverter options available. Consult factory.

Power Consumption 1.5W per arm

Warranty 5 years limited warranty

Estimated useful life of LED is 50,000 hours.

Material Black anodized aluminum. RoHS compliant.

Approval



DISCLAIMER

If the fixture has an option to be installed with a dimming control system, consult dimming system manufacturer with minimum load before installing 12V AC transformer.

Malfunction and damage to product due to improper dimming system installation or misuse will not be covered under warranty. Only DC Drivers are recommended for dimming systems. Consult MP Lighting for recommended drivers.

*MP Lighting reserves the right, at its sole discretion, at any time and without notice, to make design changes to any of our products.

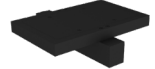


← Shown with front view cross bar.

Shown with neck view cross bar. →

← Shown with vertical view cross bar.

Cross Bar Options:



1A single neck view

2A Double neck view

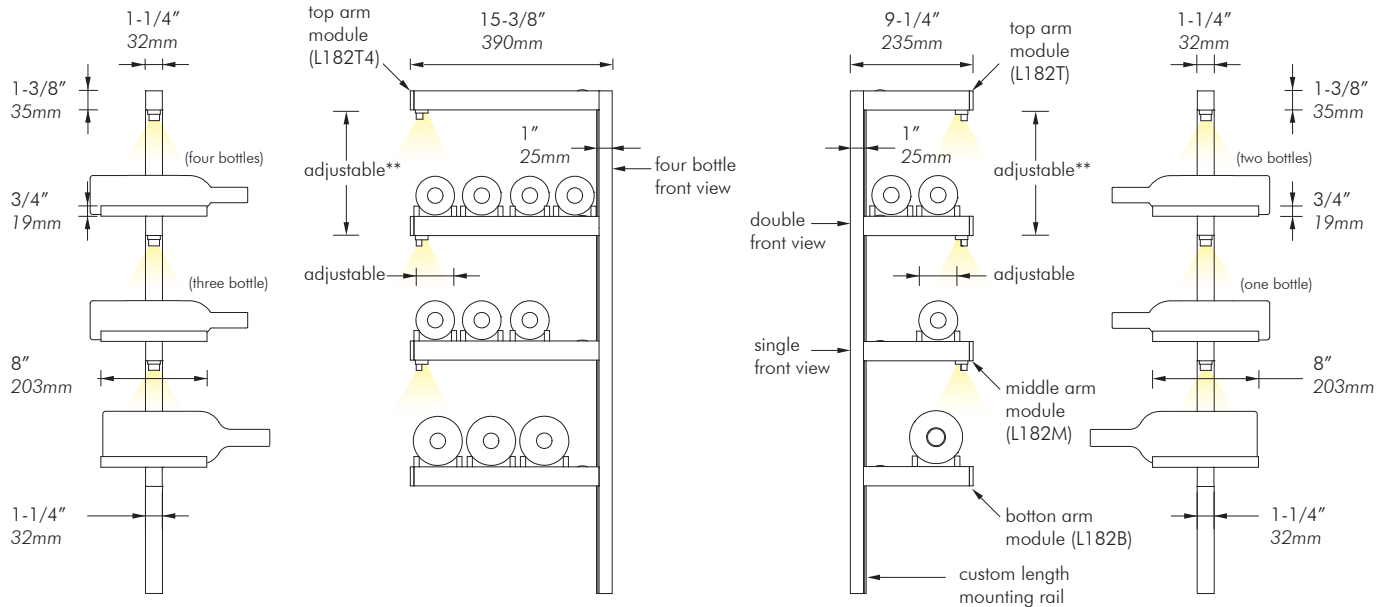
1B Single front view

2B Double front view

4B Quadruple front view

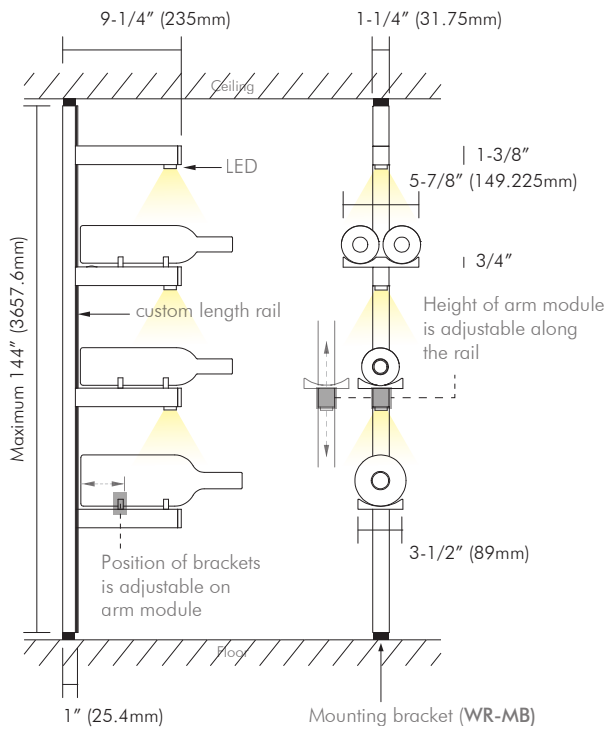
1V Single Vertical View

DIMENSION:

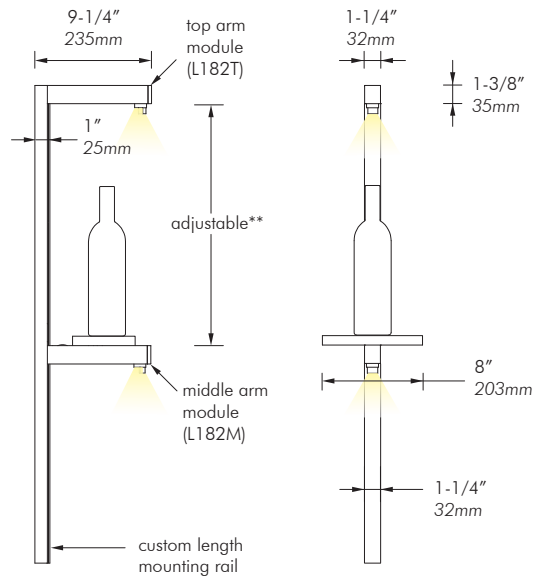


L182T4 (top bar), L182M-4B (middle bar) & L182B-4B (bottom bar)
Wall Mounted

L182T(top bar), L182M-2B (middle bar) & L182B-2B (bottom bar)
Wall Mounted



mounted from ceiling to floor



Vertical bottle holder

Order Guide

Rail comes with rubber cover.

Code	Length	ACCESSORIES	Finish
RAL182	-	-	BA
<i>rail</i>	X = custom by foot *9ft (2.74m) max recommended length	WR-MB = wine rack mounting bracket *Mounting Bracket is optional. Used only for free standing mount from ceiling to floor.	BA = black anodized

Top Arm Module has LED and no cross bars.

Code	Colour	Beam	Accessories	input Voltage	Finish
L182T	-	-	-	-	BA
<i>top arm</i>	W22S = 2200K, 80+CRI W27S = 2700K, 80+CRI W30S = 3000K, 80+CRI W30H = 3000K, 90+CRI * W22S DC only High CRI DC only	S = spot (12°) N = narrow flood (30°) W = wide flood (120°)	NA = no accessory FS = full shroud HS = half shroud	D = DC A = 12V AC	BA = black anodized

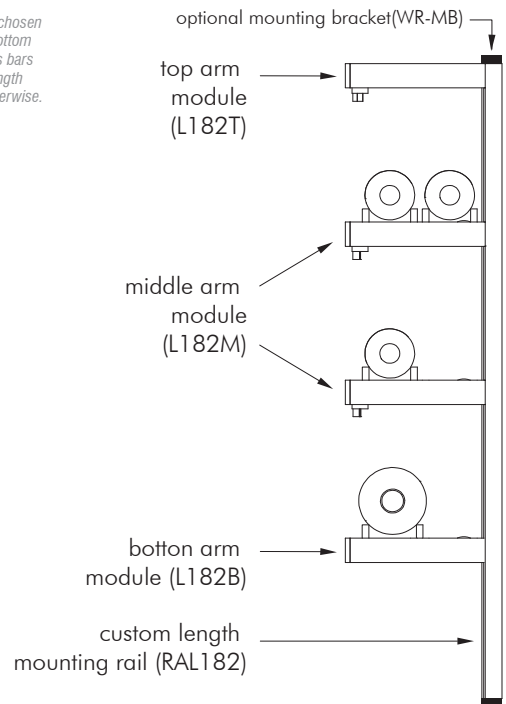
Middle Arm Module has LED and cross bars.

Code	Colour	Beam	Accessories	input Voltage	Cross Bar	Finish
L182M	-	-	-	-	-	BA
<i>middle arm</i>	W22S = 2200K, 80+CRI W27S = 2700K, 80+CRI W30S = 3000K, 80+CRI W30H = 3000K, 90+CRI * W22S DC only High CRI DC only	S = spot (12°) N = narrow flood(30°) W = wide flood (120°)	NA = no accessory FS = full shroud HS = half shroud	D = DC A = 12V AC	1A = single neck view 2A = double neck view 1B = single front view 2B = double front view *4B = 4 bottle front view 1V = vertical bottle holder	BA = black anodized

*When 4B cross bar length is chosen in any of the top, middle or bottom category, the rest of the cross bars must also be 4B cross bar length accordingly unless stated otherwise.

Bottom Arm Module has cross bars and no LED.

Code	Cross Bar	Finish
L182B	-	BA
<i>bottom arm</i>	1A = single neck view 2A = double neck view 1B = single front view 2B = double front view *4B = 4 bottle front view 1V = vertical bottle holder *When 4B cross bar length is chosen in any of the top, middle or bottom category, the rest of the cross bars must also be 4B cross bar length accordingly unless stated otherwise.	BA = black anodized



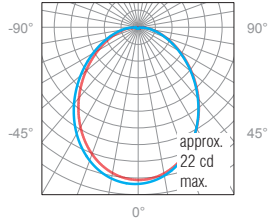
PHOTOMETRIC DATA:

1W, 3000K, 80+CRI

Polar Candela Distribution

Illuminance at a Distance

Lumen: 58lm



	Center Beam FC	Beam Width	
0.2'	774.9	0.4'	0.4'
0.3'	193.7	0.8'	0.7'
0.5'	86.1	1.1'	1.1'
0.7'	48.4	1.5'	1.4'
0.8'	31.0	1.9'	1.8'
1.0'	21.5	2.3'	2.2'

■ 0° Spread: 96.8°
 ■ 90° Spread: 94.2°