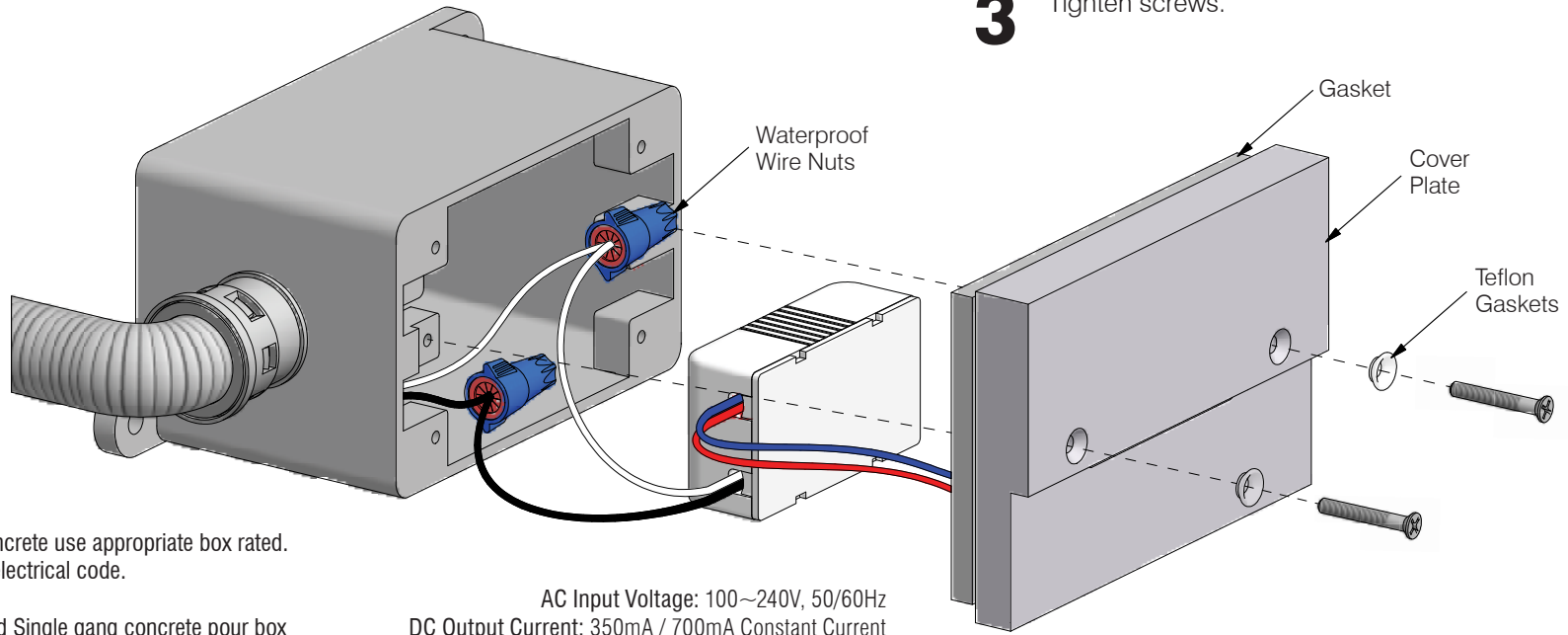


**1** Connect primary to driver input wires then fit into electrical box.

**2** Align cover plate to electrical box.

**3** Tighten screws.



AC Input Voltage: 100~240V, 50/60Hz  
DC Output Current: 350mA / 700mA Constant Current

- For cast in concrete use appropriate box rated. Consult local electrical code.
- Recommended Single gang concrete pour box SCEPTER / FD BOX-DEEP

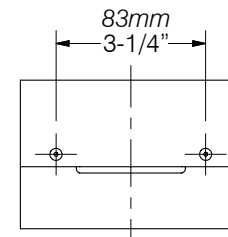
**! CAUTION** • Read all instructions.

- **WARNING: RISK OF FIRE OR ELECTRICAL SHOCK:** Do not make or alter any openings in the compartment of wiring or electrical components during installation. Do not alter or add ballasts, or any other electrical components.
- Installation and use of this fixture mounting assembly requires a person familiar with the construction and operation of luminaire electrical systems and the hazards involved, if not qualified, do not attempt installation.
- Turn off power before installation.
- Do not over tighten screws.
- Do not spray water on fixture during cleaning. Avoid using detergents with hand softeners, anti-bacterial agents, glass cleaners or acrylic cleaning products.
- **KEEP THESE INSTALLATION INSTRUCTIONS.**

Parts	Qty.
• LED unit w/ gasket	1
• Cross countersunk screws	2
• Teflon screw gaskets	2
• LED driver	1
• Waterproof wire nuts	2

- Tools**
- Phillips screwdriver *not included*

**Remote Driver Option**  
Consult factory



**L36**  
Installation  
Instructions