

# L72SR

## INTERIOR

Spotlight | For directional light for wall, picture or signage illumination

● Dry location



### Ordering Information

Clear Form

Date : \_\_\_\_\_

Quantity : \_\_\_\_\_

Project : \_\_\_\_\_

Note : \_\_\_\_\_

Type : \_\_\_\_\_

### Specifications

Luminaire | Example Code: L72-SR-12-W27H-S-X-MC

Product	Mounting	Wattage	CCT & CRI <sup>1</sup>	Beam Angle	Stem Length <sup>2</sup>	Finish
L72	SR	12				MC
	SR single rail	12 12W	<b>Standard (80+) CRI:</b> W22S 2200K 80+  <b>High (90+) CRI:</b> W27H 2700K 90+ W30H 3000K 90+ W35H 3500K 90+ W41H 4100K 90+	<b>S</b> spot 12° <b>N</b> narrow flood 30° <b>F</b> flood 60°	<b>1</b> 1" (25mm) <b>X</b> custom length	<b>Aluminum Finishes:</b> <b>MC</b> matte chrome

### System Components (Ordered Separately)

Remote Driver : \_\_\_\_\_

\* Consult MP Lighting Website or Factory.

### Important Notes

#### Specification

1. Refer to pg.2 - for Light Quality & Colour Consistency details.
2. Maximum: 8" (2438mm), 1" (25mm) increment

#### Warranty Notes & Disclaimer

Malfunction and damage to product due to incompatible dimming system or misuse will not be covered under warranty. Consult MP Lighting for recommended drivers. If the fixture has an option to be installed with a dimming control system, consult a dimming system manufacturer with minimum load before installing. MP Lighting reserves the right, at its sole discretion, at any time and without notice, to make design changes to any of our products. Consult MP Lighting website for most updated documentation.

# L72SR

## INTERIOR

Spotlight | For directional light for wall, picture or signage illumination

● Dry location



### Performance

Wattage	Forward Current	Power Consumption Budget per fixture (including driver)	LED output (Source)	Fixture Output (Delivered)
12W	350mA	17W	1320 lm	487-792 lm

### Application

Environment	Dry Location approved. IP 20.
Mounting	<b>SR:</b> Rotatable and easy to position. Designed for use on MP single rail (SR) system (sold separately)

### Electrical

Electrical	Remote LED drivers (120-277V AC input, <b>constant voltage output</b> ): Fixtures to be wired on rails.
Control	<b>On/off control</b> <b>Dimming:</b> ELV or 0-10V dimming with appropriate drivers. <b>Other options (consult factory):</b> TRIAC/MLV, DMX, DALI, Casambi, Power over Ethernet

### Luminaire Construction

LED Light Source	<b>W22S</b> = CCT: 2200K, CRI (Ra): 80+, Colour Consistency: 3SDCM <b>W27H</b> = CCT: 2700K, CRI (Ra): 90+, Colour Consistency: 2SDCM <b>W30H</b> = CCT: 3000K, CRI (Ra): 90+, Colour Consistency: 2SDCM <b>W35H</b> = CCT: 3500K, CRI (Ra): 90+, Colour Consistency: 2SDCM <b>W41H</b> = CCT: 4100K, CRI (Ra): 90+, Colour Consistency: 3SDCM
Standard Compliance	✓RoHS-compliant ✓WELL standard – Feature 58: Color Quality.
Weight	0.926lbs (0.445kg).
Material	<b>Fixture:</b> solid plated brass & aluminum.
Supplied with	<b>Standard installation:</b> Comes with single rail connector.
Warranty & LED Life	5 years limited warranty. Estimated useful life of LED is 50,000 hours.

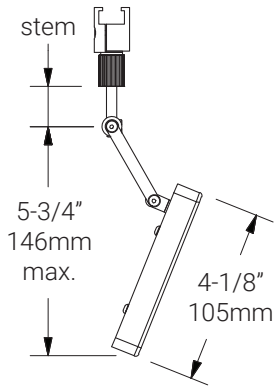
### Ordered Separately

System Components	<b>Power supplies:</b> remote driver Please consult factory or visit <a href="#">Recommended Drivers</a> for available driver options.
-------------------	---

Mounting Options & Dimensions

LED Fixture Dimensions (shown with SR single rail)

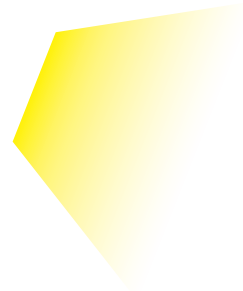
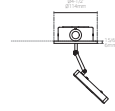
Fixture



3D View

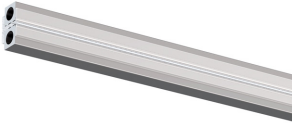


Beam



SR

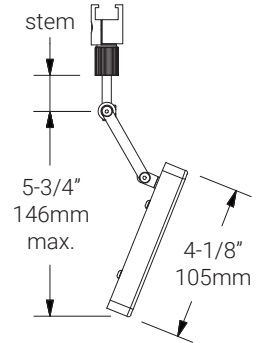
Single Rail



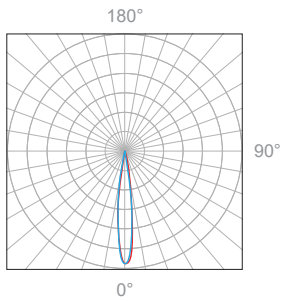
Fixture with Single Rail



Fixture



Polar Candela Distribution



Beam Width: 12°

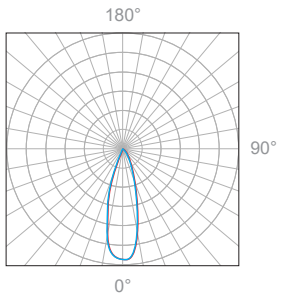


Illuminance at a Distance

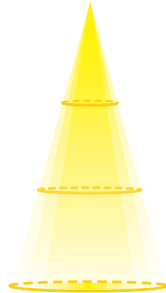
Distance		Center Beam fc	Beam Width			
3.0ft	0.91m	716.0fc	3.9ft	1.18m	3.9ft	1.18m
6.0ft	1.83m	198.0fc	7.7ft	2.34m	7.8ft	2.37m
9.0ft	2.74m	87.0fc	11.6ft	3.53m	11.7ft	3.57m
12.0ft	3.66m	48.0fc	15.4ft	4.69m	15.6ft	4.75m
15.0ft	4.57m	32.0fc	19.3ft	5.88m	19.5ft	5.94m
18.0ft	5.49m	22.0fc	23.1ft	7.04m	23.4ft	7.13m

Delivered Lumen: 792 lm  
 ■ Vertical Beam Spread: 19.0°  
 ■ Horizontal Beam Spread: 19.0°

Polar Candela Distribution



Beam Width: 30°

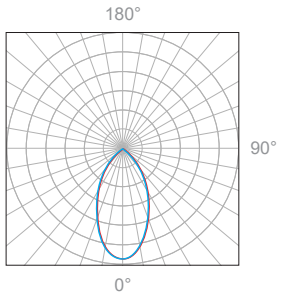


Illuminance at a Distance

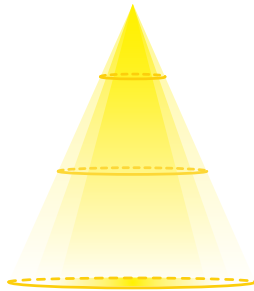
Distance		Center Beam fc	Beam Width			
3.0ft	0.91m	198.0fc	1.6ft	0.48m	1.6ft	0.48m
6.0ft	1.83m	51.0fc	3.3ft	1.00m	3.3ft	1.00m
9.0ft	2.74m	22.0fc	4.9ft	1.49m	4.9ft	1.49m
12.0ft	3.66m	13.0fc	6.6ft	2.01m	6.6ft	2.01m
15.0ft	4.57m	8.4fc	8.2ft	2.49m	8.2ft	2.49m
18.0ft	5.49m	5.8fc	9.9ft	3.01m	9.9ft	3.01m

Delivered Lumen: 535 lm  
 ■ Vertical Beam Spread: 30.7°  
 ■ Horizontal Beam Spread: 30.7°

Polar Candela Distribution



Beam Width: 48°



Illuminance at a Distance

Distance		Center Beam fc	Beam Width			
3.0ft	0.91m	63.0fc	1.0ft	0.30m	1.0ft	0.30m
6.0ft	1.83m	15.0fc	2.0ft	0.60m	2.0ft	0.60m
9.0ft	2.74m	6.7fc	3.0ft	0.91m	3.0ft	0.91m
12.0ft	3.66m	3.9fc	4.0ft	1.21m	4.0ft	1.21m
15.0ft	4.57m	2.7fc	5.0ft	1.52m	5.0ft	1.52m
18.0ft	5.49m	1.9fc	6.0ft	1.82m	6.0ft	1.82m

Delivered Lumen: 487 lm  
 ■ Vertical Beam Spread: 65.5°  
 ■ Horizontal Beam Spread: 66.0°