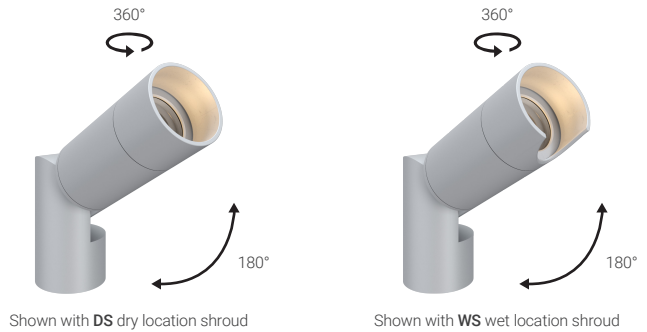


L730-S

EXTERIOR | INTERIOR

Spotlight | For surface mount on ground, ceilings & walls

- Wet, Damp, and Dry location



Shown with DS dry location shroud

Shown with WS wet location shroud

Ordering Information

Clear Form

Date : _____ Quantity : _____

Project : _____ Note : _____

Type : _____

Specifications

Luminaire | Example Code: L730-S-B4-2-W302H-S-ELB-DS-S6

| Product | # of Spotlights ¹ | Canopy ² | Version | CCT & CRI ³ | Beam Angle | Accessories (optional) | Shroud | Finish ⁴ |
|-------------|------------------------------|---------------------|--------------|---|----------------------------------|------------------------|--|---|
| L730 | S | | | | | | | |
| | S single | B2 B3 B4 | 1 1W 2 2W | W22S 2200K 80+ W27H 2700K 90+ W30H 3000K 90+ W35H 3500K 90+ W41H 4100K 90+ AMB amber LED | S spot 12° N narrow flood 30° | ELB eggcrate louver | DS dry location shroud WS wet location shroud | Aluminum Finishes: MA matte clear anodized BA black anodized WH white powder coat Stainless Steel Finish: S6 stainless steel 316 |

System Components (Ordered Separately)

Remote Driver : _____ Control System : _____

On/Off | Dimming ELV or 0-10 dimming
Other options (consult factory) TRIAC/MLV, DMX, DALI, Casambi, PoE

Important Notes

Specification

- Refer to MP Lighting website or visit [L730D](#) & [L730I](#) for multiple spotlights.
- See pg.3 - for different canopy options and its dimensions. B3 is not available with S6 (stainless steel 316).
- 3-step MacAdam (2-step MacAdam for 2700K & 3000K)
- Refer to Appendix or MP Lighting website for complete look of luminaire with different finish options. S6 (stainless steel 316) is available with B2 and B4 canopies.

Warranty Notes & Disclaimer

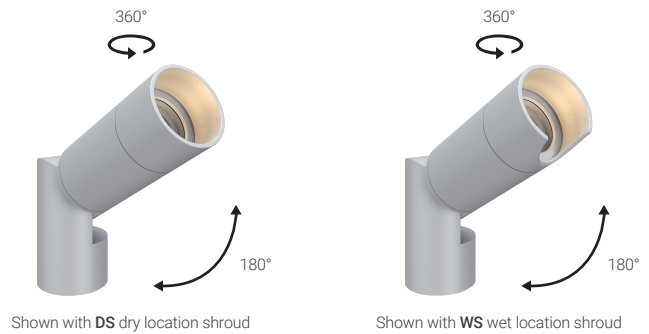
Malfunction and damage to product due to incompatible dimming system or misuse will not be covered under warranty. Consult MP Lighting for recommended drivers. If the fixture has an option to be installed with a dimming control system, consult a dimming system manufacturer with minimum load before installing. MP Lighting reserves the right, at its sole discretion, at any time and without notice, to make design changes to any of our products. Consult MP Lighting website for most updated documentation.

L730-S

EXTERIOR | INTERIOR

Spotlight | For surface mount on ground, ceilings & walls

- Wet, Damp, and Dry location



Performance

| Wattage | Forward Current | Power Consumption Budget per fixture (including driver) | LED output (Source) | Fixture Output (Delivered) |
|---------|-----------------|---|---------------------|----------------------------|
| 1W | 350mA | 1.3W | 110 lm | 47-56 lm |
| 2W | 700mA | 2.6W | 220 lm | 90-99 lm |

Application

| | |
|-------------|--|
| Environment | Wet / Damp / Dry Location approved. IP 66. Wet location shroud (WS) can be specified where proper drainage for water in shroud is required. |
| Mounting | B2: Mounts to surface with a mounting plate B3: Mounts to surface with a mounting plate B4: Mounts to standard 1-1/2" octagonal box |

Electrical

| | |
|----------------|--|
| Power Supplies | Remote LED drivers (120-277V AC input, constant current output): Fixtures to be wired in series. Integral driver available with B3 canopy --- Consult factory. |
| Control | On/off control Dimming: ELV or 0-10V dimming with appropriate drivers Other options (consult factory): TRIAC/MLV, DMX, DALI, Casambi, Power over Ethernet |

Luminaire Construction

| | |
|---------------------|--|
| LED Light Source | Light Quality: Colour Rendering Index (CRI) - Ra=90+ (80+ for 2200K) R9=50+ Colour Consistency: 2-step MacAdam (3-step MacAdam for 2200K & 4100K) |
| Standard Compliance | ✓ADA-compliant ✓WELL standard – Feature 58: Color Quality |
| Weight | N/A |
| Material | Fixture: machined marine-grade aluminum or machined stainless steel 316 |
| Supplied with | Standard installation housing: Comes with a canopy, a universal crossbar, two hex socket head screws, two wire-nuts, and an allen key. |
| Warranty & LED Life | 5 years limited warranty Estimated useful life of LED is 50,000 hours. |

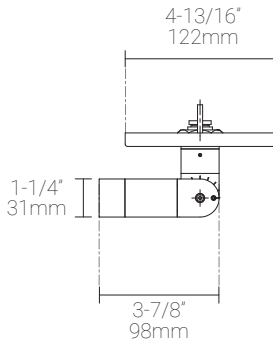
Ordered Separately

| | |
|-------------------|---|
| System Components | Power supplies: remote driver Please consult factory or visit Recommended Drivers for available driver options. |
|-------------------|---|

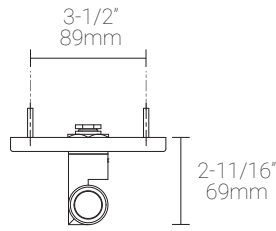
Mounting Options & Dimensions

LED Fixture Dimensions (shown with B4 canopy)

Fixture



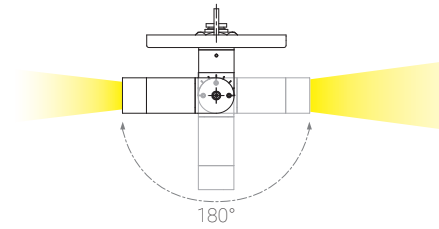
Front View



3D View

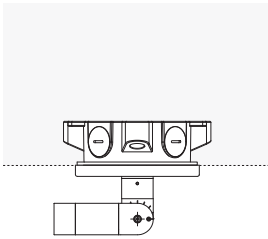


Beam

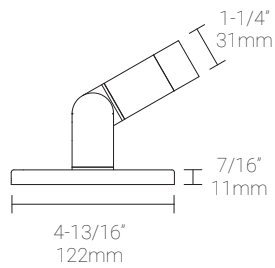


Ground Installation (shown with B4 canopy)

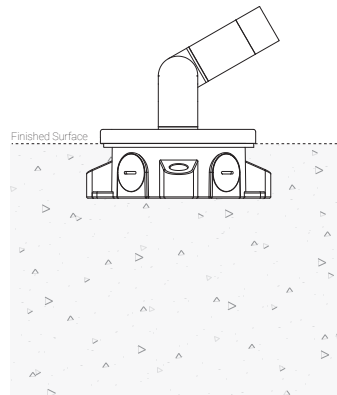
Fixture



Fixture with Back Box:
Complete Concrete Installation



Fixture with Back Box & MK3:
Complete Concrete Installation



* Back box sold separately.
Model#: EBX-OCT1

Mounting Options & Dimensions

B2 | Compatible with Landscape/Electrical Pipes

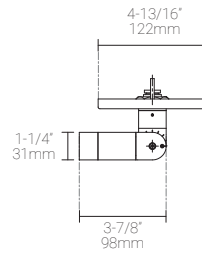
Canopy



Fixture with Canopy



Dimensions



B3 | Compatible with Landscape/Electrical Pipes & Integral Driver

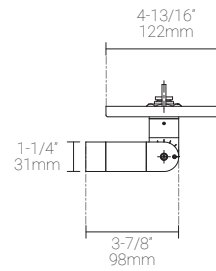
Canopy



Fixture with Canopy



Dimensions



B4

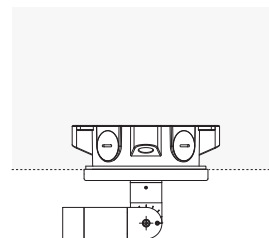
Canopy



Fixture with Canopy

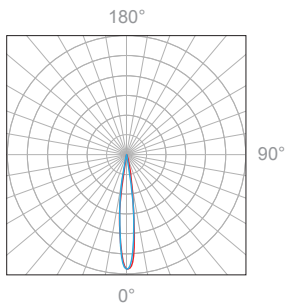


Dimensions



1W, 3000K, 90+ CRI

Polar Candela Distribution



Beam Width: 12°

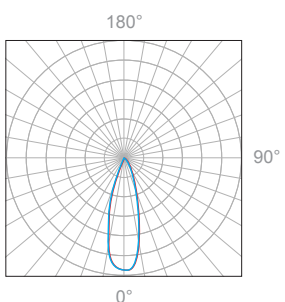


Illuminance at a Distance

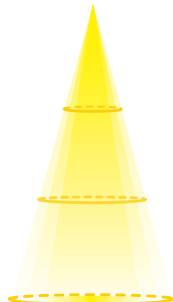
| Distance | | Center Beam fc | Beam Width | | | |
|----------|-------|----------------|------------|-------|-------|-------|
| 1.0ft | 0.30m | 333fc | 0.3ft | 0.09m | 0.3ft | 0.09m |
| 2.0ft | 0.61m | 94fc | 0.7ft | 0.21m | 0.7ft | 0.21m |
| 3.0ft | 0.91m | 41fc | 1.0ft | 0.30m | 1.0ft | 0.30m |
| 4.0ft | 1.22m | 22fc | 1.3ft | 0.40m | 1.3ft | 0.40m |
| 5.0ft | 1.52m | 15fc | 1.7ft | 0.52m | 1.7ft | 0.52m |
| 6.0ft | 1.83m | 10fc | 2.1ft | 0.64m | 2.1ft | 0.64m |

Delivered Lumen: 65lm
 ■ Vertical Beam Spread: 19.4°
 ■ Horizontal Beam Spread: 19.4°

Polar Candela Distribution



Beam Width: 30°



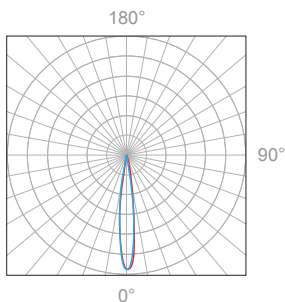
Illuminance at a Distance

| Distance | | Center Beam fc | Beam Width | | | |
|----------|-------|----------------|------------|-------|-------|-------|
| 1.0ft | 0.30m | 209fc | 0.5ft | 0.15m | 0.5ft | 0.15m |
| 2.0ft | 0.61m | 56fc | 1.0ft | 0.30m | 1.0ft | 0.30m |
| 3.0ft | 0.91m | 26fc | 1.5ft | 0.46m | 1.5ft | 0.46m |
| 4.0ft | 1.22m | 14fc | 2.0ft | 0.61m | 2.0ft | 0.61m |
| 5.0ft | 1.52m | 9fc | 2.5ft | 0.76m | 2.5ft | 0.76m |
| 6.0ft | 1.83m | 7fc | 3.1ft | 0.95m | 3.1ft | 0.95m |

Delivered Lumen: 75lm
 ■ Vertical Beam Spread: 28.5°
 ■ Horizontal Beam Spread: 28.7°

2W, 3000K, 90+ CRI

Polar Candela Distribution



Beam Width: 12°

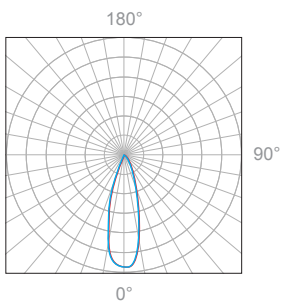


Illuminance at a Distance

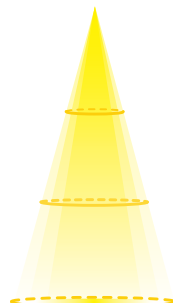
| Distance | | Center Beam fc | Beam Width | | | |
|----------|-------|----------------|------------|-------|-------|-------|
| 1.0ft | 0.30m | 593fc | 0.3ft | 0.09m | 0.3ft | 0.09m |
| 2.0ft | 0.61m | 166fc | 0.7ft | 0.21m | 0.7ft | 0.21m |
| 3.0ft | 0.91m | 70fc | 1.0ft | 0.30m | 1.0ft | 0.30m |
| 4.0ft | 1.22m | 40fc | 1.3ft | 0.40m | 1.3ft | 0.40m |
| 5.0ft | 1.52m | 26fc | 1.7ft | 0.52m | 1.7ft | 0.52m |
| 6.0ft | 1.83m | 18fc | 2.0ft | 0.61m | 2.0ft | 0.61m |

Delivered Lumen: 129lm
 ■ Vertical Beam Spread: 19.0°
 ■ Horizontal Beam Spread: 19.0°

Polar Candela Distribution



Beam Width: 30°



Illuminance at a Distance

| Distance | | Center Beam fc | Beam Width | | | |
|----------|-------|----------------|------------|-------|-------|-------|
| 1.0ft | 0.30m | 384fc | 0.5ft | 0.15m | 0.5ft | 0.15m |
| 2.0ft | 0.61m | 104fc | 1.0ft | 0.30m | 1.0ft | 0.30m |
| 3.0ft | 0.91m | 45fc | 1.5ft | 0.46m | 1.5ft | 0.46m |
| 4.0ft | 1.22m | 25fc | 2.0ft | 0.61m | 2.0ft | 0.61m |
| 5.0ft | 1.52m | 16fc | 2.5ft | 0.76m | 2.5ft | 0.76m |
| 6.0ft | 1.83m | 12fc | 3.0ft | 0.91m | 3.0ft | 0.91m |

Delivered Lumen: 149lm
 ■ Vertical Beam Spread: 28.3°
 ■ Horizontal Beam Spread: 28.3°

Appendix

Aluminum Finishes

B2



MA matte clear anodized



BA black anodized



BZ bronze

B3



MA matte clear anodized



BA black anodized



BZ bronze

B4



MA matte clear anodized



BA black anodized



BZ bronze

Shroud Options

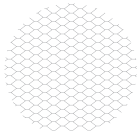


DS dry location shroud



WS wet location shroud

Accessories



ELB eggcrate louver, black