

LED10W600iP-01

CONSTANT CURRENT

10W, 600mA, ELV dimmable, 120V AC Input

○ Damp, and Dry location



Ordering Information

Clear Form

Date : _____

Project : _____

Type : _____

Quantity : _____

Note : _____

Specifications

LED Driver | Example Code: LED10W600iP-01-B

Product	Enclosure
LED10W600iP-01	B
	B driver enclosure

Important Notes

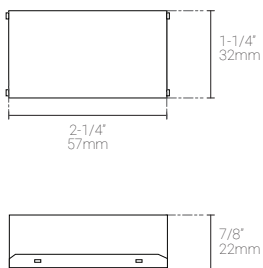
Warranty Notes & Disclaimer

MP Lighting reserves the right, at its sole discretion, at any time and without notice, to make improvements and innovations to any of our products. Consult MP Lighting website for further details.

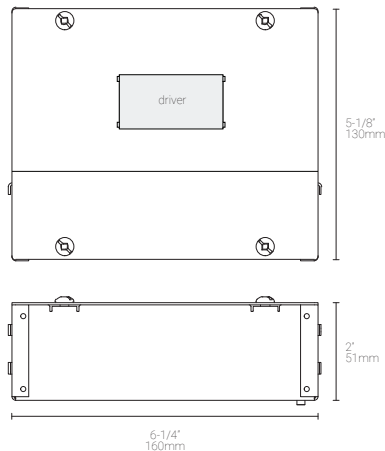
1. Do not install on-off switch at the output (load) side of a constant current LED driver as it will damage the fixture(s) and will void the warranty on both driver and fixture(s).
2. Fixtures must be wired as per MP Lighting's instruction (series wiring for constant current driver and parallel wiring for constant voltage drivers.) Failures due to improper installation will void warranty.

Dimensions

Driver



Driver with Enclosure (EBX-160-ZP)



LED10W600iP-01

CONSTANT CURRENT

10W, 600mA, ELV dimmable, 120V AC Input

○ Damp, and Dry location



Performance

Input	Output	Efficiency
Voltage: 120V AC, 60 Hz	Voltage: 8~13V DC	Power Factor: 0.9 minimum.
	Current: 600mA Constant	Typical Efficiency: 80%
	Wattage: 10W maximum	

Controls

Dimming Protocols	ELV dimming at 120V only. Can be used in both dimming & non-dimming systems.
Dimming Range	10%~100%

Recommended Load

Driver Load

Typically used for 6W or 8W LED fixtures with the load below:

Systems		Load	
Input Voltage	System Dimming Option	Minimum	Maximum
120V only	Dimming	1	1
	Non- Dimming	1	1

Application

Environments	Damp / Dry Location approved.
Ambient Temperature	-20°C (-4°F) minimum
Case Temperature	80°C (176°F) maximum
Driver Protection	Short Circuit, Overload & Over-voltage protection
Weight	65g (0.143lb)
Case Material	Aluminum

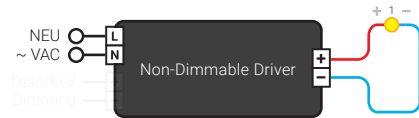
Wiring Diagram

Dimming | For use with 1 x 6W or 1 x 8W LED lighting fixtures (600mA), wired in series



● 600mA LED Lighting Fixture

Non-Dimming | For use with 1 x 6W or 1 x 8W LED lighting fixtures (600mA), wired in series



● 600mA LED Lighting Fixture