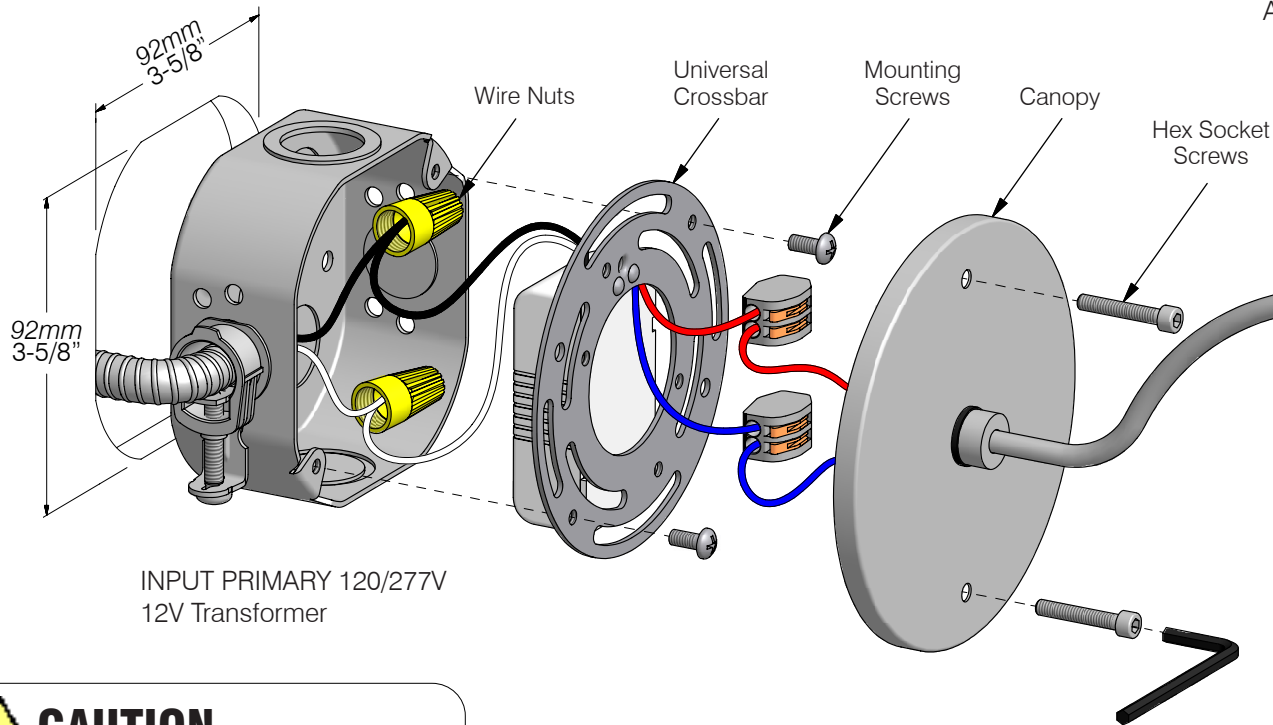


1 Connect fixture leads to 60W minimum 12V transformer. Next, connect primary to driver input wires then fit into electrical box. For remote driver connect fixture wires to low voltage wiring.

2 Align canopy and crossbar to electrical box fasten with mounting screws.

3 Tighten hex socket head screws with Allen Key.



⚠ CAUTION

- Read all instructions.
- Risk of fire and electrical shock. Turn off power before installation.
- Do not over tighten screws.
- Connect to 12V electronic transformer.
- Use only low voltage electronic dimmers.
- Test installation by leaving fixture on for 20-30 minutes to ensure proper operation.
- Keep this document as a reference.

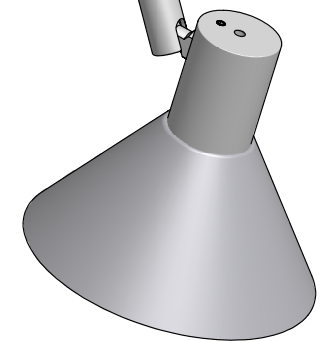
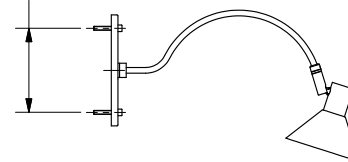
Parts

- | | |
|---|---|
| • X45W3 unit | 1 |
| • Hex socket head screws | 2 |
| • Mounting screws | 2 |
| • Universal crossbar w/ 12V electronic transformer. | 1 |

Tools

- | | |
|------------------------|---------------------|
| • Phillips screwdriver | <i>not included</i> |
| • Allen key | <i>included</i> |

89 mm
3-1/2"



X45W3
Installation
Instructions