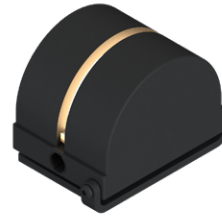


# L159

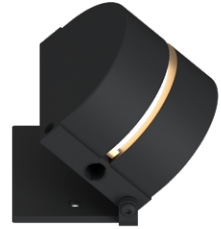
EXTERIOR | INTERIOR  
Window Sill

• Wet, Damp, and Dry location

RoHS



Shown with no tilt angle



Shown with 45° tilt

## Ordering Information

Clear Form

Date : \_\_\_\_\_

Quantity : \_\_\_\_\_

Project : \_\_\_\_\_

Note : \_\_\_\_\_

Type : \_\_\_\_\_

## Specifications

Luminaire | Example Code: L159-4-W30H-E-BA

Product	Version	CCT & CRI <sup>1</sup>	Beam Angle	Trim Finish
L159	4		E	BA
	4 4.5W	W27H 2700K 90+ W30H 3000K 90+	E 5° by 175°	BA black anodized
		RGB-W RGB White		

### System Components (Ordered Separately)

Remote Driver : \_\_\_\_\_

\* Consult MP Lighting Website or Factory.

### Important Notes

#### Specification

1. Refer to pg.2 - for Light Quality & Colour Consistency details. Consult factory for RGB White option.

#### Warranty Notes & Disclaimer

Malfunction and damage to product due to incompatible dimming system or misuse will not be covered under warranty. Consult MP Lighting for recommended drivers. If the fixture has an option to be installed with a dimming control system, consult a dimming system manufacturer with minimum load before installing. MP Lighting reserves the right, at its sole discretion, at any time and without notice, to make design changes to any of our products. Consult MP Lighting website for most updated documentation.

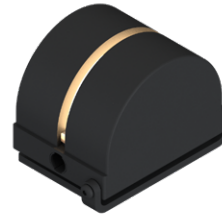
# L159

EXTERIOR | INTERIOR

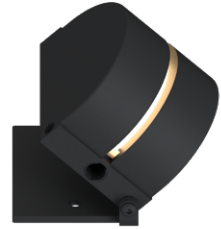
Window Sill

• Wet, Damp, and Dry location

RoHS   



Shown with no tilt angle



Shown with 45° tilt

## Performance

Wattage	Forward Current	Power Consumption Budget per fixture (including driver)	LED output (Source)	Fixture Output (Delivered)
4W	350mA	4.5W	440lm	26.8lm

## Application

Environment	Wet, Damp, Dry Location approved. IP 66.
Mounting	Designed to be installed on the bottom or side of the window, fastened by two screws. Included 3' (914mm) wire lead.

## Electrical

Power Supplies	Remote LED drivers (120-277V AC input, <b>constant current output</b> ): Fixtures to be wired in series.
Control	<b>On/off control</b> <b>Dimming:</b> ELV or 0-10V dimming with appropriate drivers <b>Other options (consult factory):</b> TRIAC/MLV, DMX, DALI, Casambi, Power over Ethernet

## Luminaire Construction

LED Light Source	<b>W27H</b> = CCT: 2700K, CRI (Ra): 90+, Colour Consistency: 2SDCM <b>W30H</b> = CCT: 3000K, CRI (Ra): 90+, Colour Consistency: 2SDCM
Weight	N/A
Material	<b>Fixture:</b> solid anodized aluminum
Supplied with	<b>Standard installation housing:</b> Comes with two screws. <b>Cable:</b> 3' (914mm) factory-installed wire lead
Warranty & LED Life	5 years limited warranty Estimated useful life of LED is 50,000 hours.

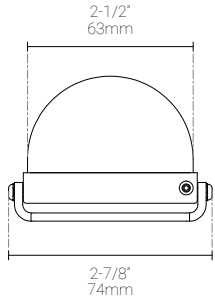
## Ordered Separately

System Components	<b>Power supplies:</b> remote driver
-------------------	--------------------------------------

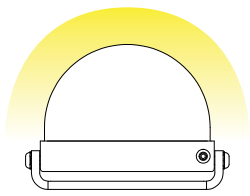
Mounting Options & Dimensions

Fixture Dimensions

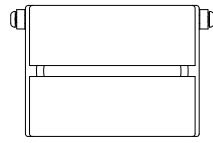
Fixture



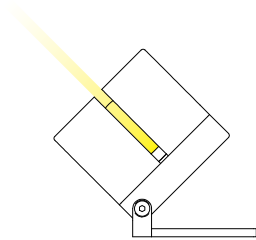
Beam 1



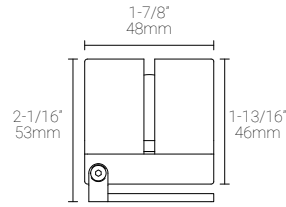
Top View



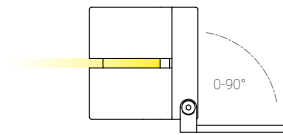
Beam 2



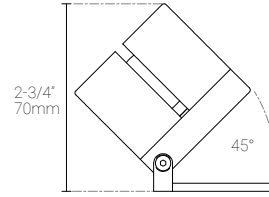
Side View



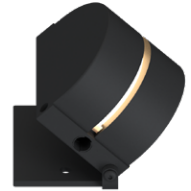
Beam 3



Side View 2

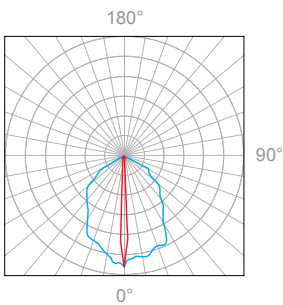


3D View



4W, 3000K, 90+ CRI

Polar Candela Distribution



Illuminance at a Distance

Distance		Center Beam fc	Beam Width			
1.0ft	0.30m	179fc	1.8ft	0.54m	0.1ft	0.03m
2.0ft	0.61m	51fc	3.5ft	1.07m	0.2ft	0.06m
3.0ft	0.91m	23fc	5.3ft	1.62m	0.3ft	0.09m
4.0ft	1.22m	13fc	7.1ft	2.16m	0.4ft	0.12m
5.0ft	1.52m	8.4fc	8.8ft	2.68m	0.5ft	0.15m
10.0ft	3.05m	2.1fc	17.7ft	5.39m	1.0ft	0.30m

Delivered Lumen: 26.8lm  
 ■ Vertical Beam Spread: 83.4°  
 ■ Horizontal Beam Spread: 6.4°