



Type:

Project:

Modified:

Quantity:

Notes:

L182

Application Modular bottle rack system for restaurants, bars, lounges and wine cellars with 100% no UV and no heat.

Mounting **Wall Mount:** Can be mounted directly to wall Up to 8ft (2.44m) maximum. *Please contact factory for custom length taller than 8ft (2.44m)*

Free Standing: Can be mounted freely from ceiling to floor – Optional mounting bracket (WR-WB, sold separately) must be used for Free Standing mounting option. Up to 8ft (2.44m) maximum.

Electrical 1W, 350mA LED per arm.

LED Input Voltage: 4V DC / 12VAC

Remote Power Supply: (not included)

DC - Powered by remote 350mA DC driver. Dimmable with appropriate remote power supply.

*See website or consult factory for recommended drivers

*Remote emergency driver / inverter options available. Consult factory.

Power Consumption 1.5W per arm

Warranty 5 years limited warranty

Estimated useful life of LED is 50,000 hours.

Material Black anodized aluminum. RoHS compliant.

Approval



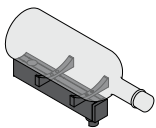
DISCLAIMER

If the fixture has an option to be installed with a dimming control system, consult dimming system manufacturer with minimum load before installing 12V AC transformer.

Malfunction and damage to product due to improper dimming system installation or misuse will not be covered under warranty. Only DC Drivers are recommended for dimming systems. Consult MP Lighting for recommended drivers.

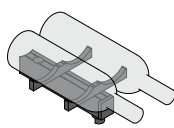
*MP Lighting reserves the right, at its sole discretion, at any time and without notice, to make design changes to any of our products.

Cross Bar Options:



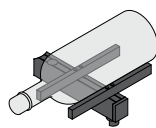
Single neck view

L182M-1A Middle arm module
L182B-1A Bottom arm module



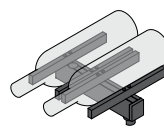
Double neck view

L182M-2A Middle arm module
L182B-2A Bottom arm module



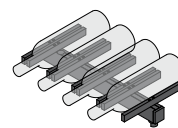
Single front view

L182M-1B Middle arm module
L182B-1B Bottom arm module



Double front view

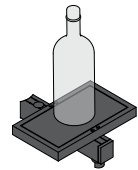
L182M-2B Middle arm module
L182B-2B Bottom arm module



Four bottle front view

L182M-4B Middle arm module
L182B-4B Bottom arm module

NEW

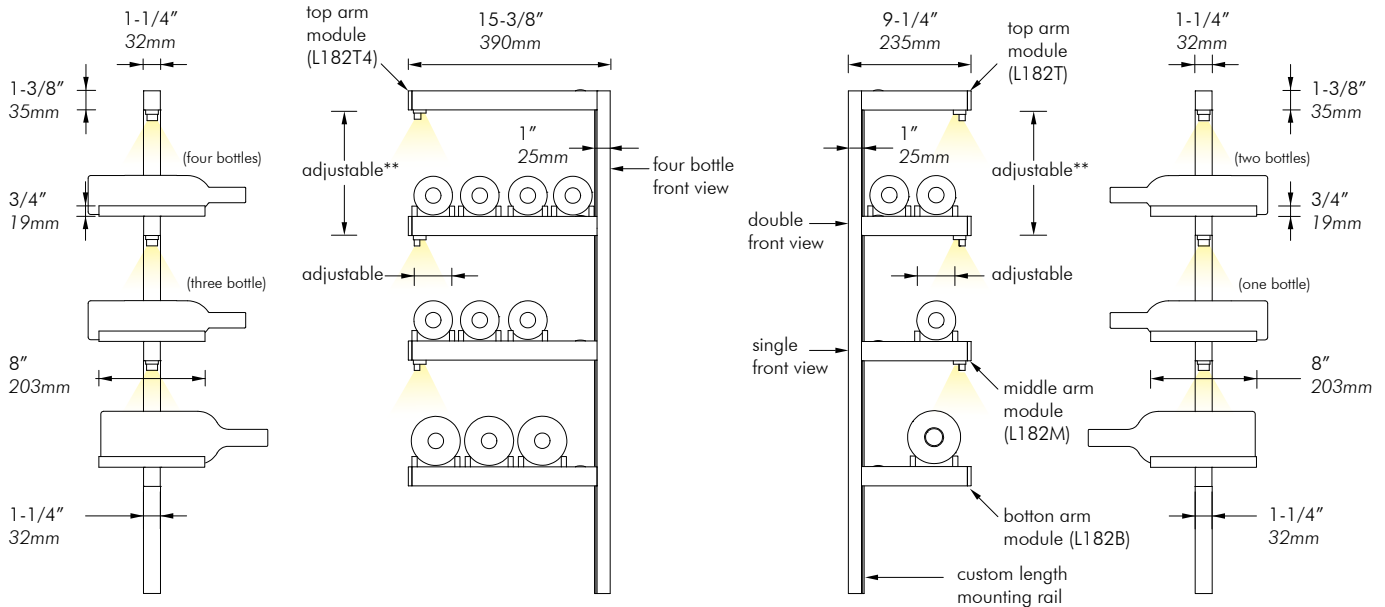


Single vertical view

L182M-V Middle arm module
L182B-V Bottom arm module

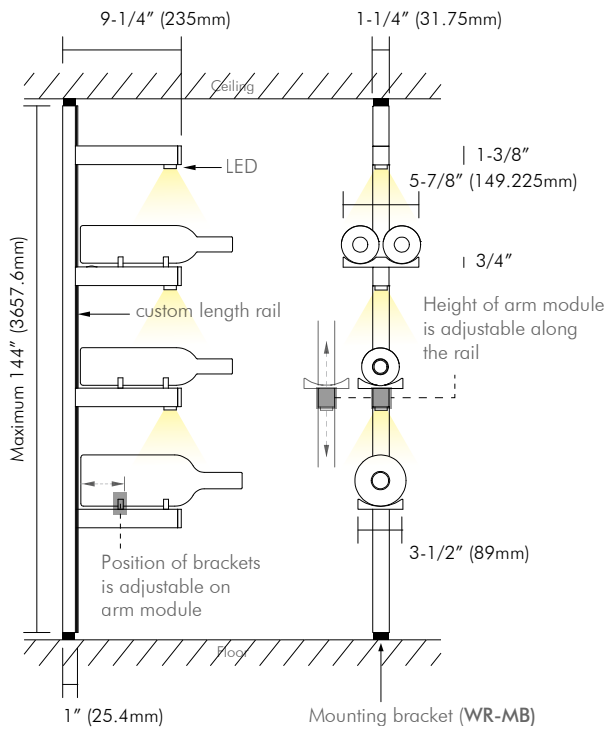
NEW

DIMENSION:

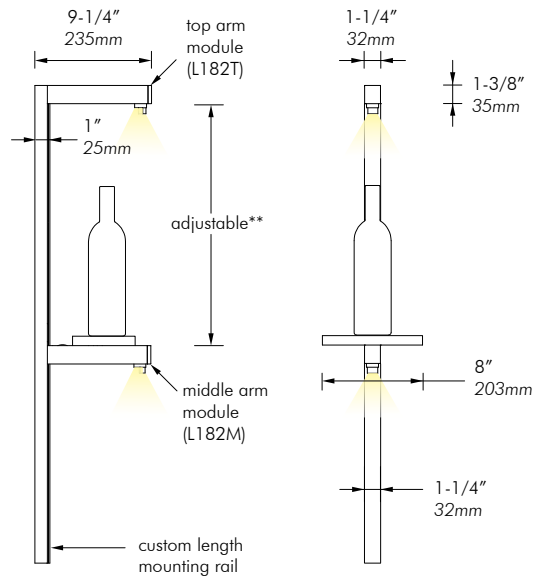


L182T4 (top bar), L182M-4B (middle bar) & L182B-4B (bottom bar)
Wall Mounted

L182T(top bar), L182M-2B (middle bar) & L182B-2B (bottom bar)
Wall Mounted



mounted from ceiling to floor



Vertical bottle holder

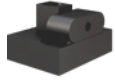
Order Guide

Rail comes with rubber cover.

Code	Length	Finish
RAL182	-	- BA
<i>rail</i>	X = custom by foot	BA = black anodized
	** 8ft (2.44m) max. recommended length	

Mounting Bracket is optional. Used **only for free standing** mount from ceiling to floor. ****8ft (2.44m) max. free standing height of back rail.**

Code	Finish
WR-MB	- BA
<i>mounting bracket</i>	BA = black anodized



Mounting Bracket

Top Arm Module has LED and no cross bars.

Code	Colour	Beam	Accessories	input Voltage	Finish
L182T	-	-	-	-	- BA
<i>top arm</i>	W22S = 2200K, 80+CRI W27S = 2700K, 80+CRI W30S = 3000K, 80+CRI W35S = 3500K, 80+CRI W41S = 4100K, 80+CRI W27H = 2700K, 90+CRI W30H = 3000K, 90+CRI W35H = 3500K, 90+CRI	S = spot (12°) N = narrow flood (30°) W = wide flood (120°)	NA = no accessory FS = full shroud HS = half shroud	D = DC	BA = black anodized

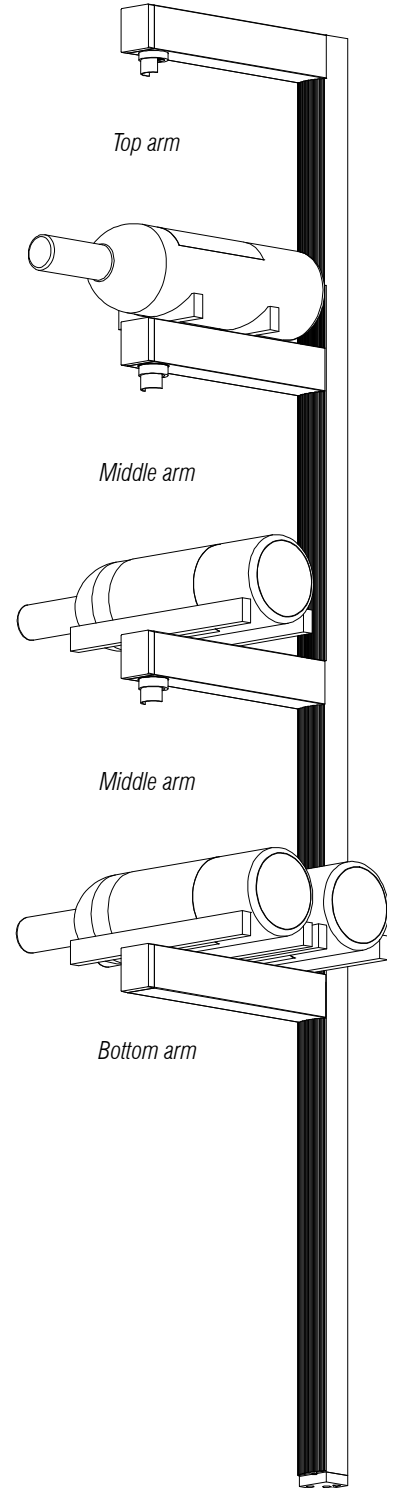
Middle Arm Module has LED and cross bars.

Code	Colour	Beam	Accessories	input Voltage	Cross Bar	Finish
L182M	-	-	-	-	-	- BA
<i>middle arm</i>	W22S = 2200K, 80+CRI W27S = 2700K, 80+CRI W30S = 3000K, 80+CRI W35S = 3500K, 80+CRI W41S = 4100K, 80+CRI W27H = 2700K, 90+CRI W30H = 3000K, 90+CRI W35H = 3500K, 90+CRI	S = spot (12°) N = narrow flood(30°) W = wide flood (120°)	NA = no accessory FS = full shroud HS = half shroud	D = DC	1A = single neck view 2A = double neck view 1B = single front view 2B = double front view *4B = 4 bottle front view 1V = vertical bottle holder	BA = black anodized

Bottom Arm Module has cross bars and no LED.

Code	Cross Bar	Finish
L182B	-	- BA
<i>bottom arm</i>	1A = single neck view 2A = double neck view 1B = single front view 2B = double front view *4B = 4 bottle front view 1V = vertical bottle holder	BA = black anodized

**** When 4B cross bar length is chosen in any of the top, middle or bottom category, the rest of the cross bars must also be 4B cross bar length accordingly unless stated otherwise.**



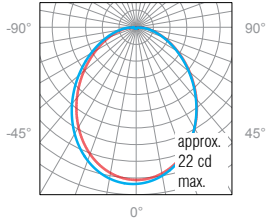
PHOTOMETRIC DATA:

1W, 3000K, 80+CRI

Polar Candela Distribution

Illuminance at a Distance

Lumen: 58lm



	Center Beam FC	Beam Width	
0.2'	774.9	0.4'	0.4'
0.3'	193.7	0.8'	0.7'
0.5'	86.1	1.1'	1.1'
0.7'	48.4	1.5'	1.4'
0.8'	31.0	1.9'	1.8'
1.0'	21.5	2.3'	2.2'

■ 0° Spread: 96.8°
 ■ 90° Spread: 94.2°