


# L193

- Application** Interior pendant
- IP Rating** 20
- Mounting** Retrofit to existing standard octagonal box using custom mounting plate (included).
- Electrical** DC - Powered by remote 120V primary, 700mA driver (not included). Recommended LED10W350D for 2' and LED20W700i for 4' (0-10V dimmable).24V DC Constant Voltage.  
\* Please consult factory for more details.
- Power Consumption** 9W (2')  
12W (3')  
17W (4')
- Light Output** 9W (2') = 264lm  
12W (3') = 395 lm  
17W (4') = 527lm
- Warranty** 5 years limited warranty  
Estimated useful life of LED is 50,000 hours.
- Material** PMMA (Acrylic)
- Weight** 2' pendant = 1.5lbs (0.7kg)  
3' pendant = 1.8lbs (1.05kg)  
4' pendant = 2.5lbs (1.13kg)
- Approval** 

- Type:**
- Project:**
- Modified:**
- Quantity:**
- Notes:**

**DISCLAIMER** - When using a control system, consult dimming system manufacturer with minimum load before installing. Malfunction and damage to product due to improper dimming system installation or misuse will not be covered under warranty. Only DC Drivers are recommended for dimming systems. Consult MP Lighting for recommended drivers.

\*MP Lighting reserves the right, at its sole discretion, at any time and without notice, to make design changes to any of our products.

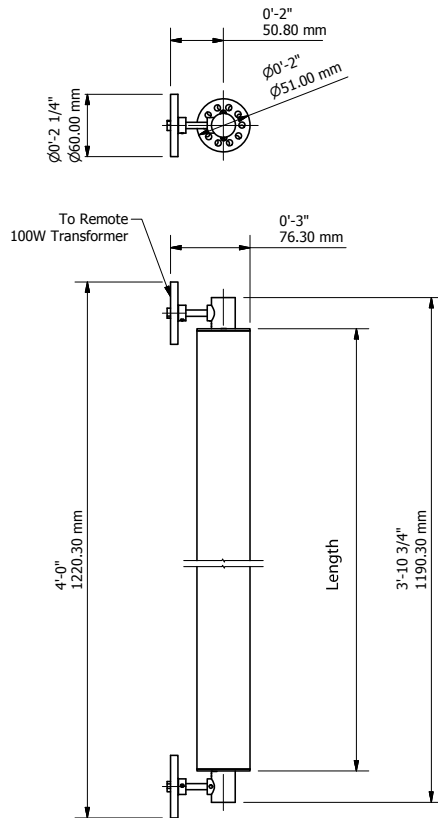
## Order Guide

Example: L193-C1-2-W30S-MA

Code	Mount	Length	Color	Finish
<b>L193</b>	<b>C1</b>	-	-	-
	C1 = Ø2-3/8" x 1/4" canopy, retrofit mounting plate	2 = 2' 3 = 3' 4 = 4'	W22S = 2200K, 80+CRI W27S = 2700K, 80+CRI W30S = 3000K, 80+CRI	MA= matte clear anodized

\* available in 1ft (305mm) increments up to 8ft (2439mm) max.

**DIMENSION:**

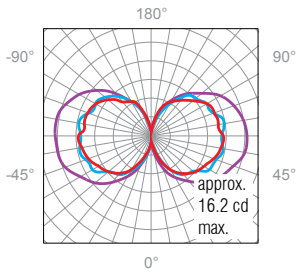


**PHOTOMETRIC DATA:**

**1', 3000K, 80+CRI**

**Polar Candela Distribution**

Lumen: 137lm



**Illuminance at a Distance**

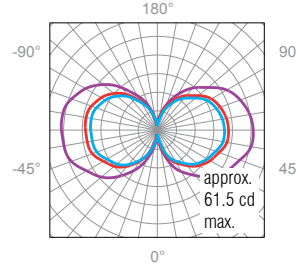
Distance	Center Beam FC	Beam Width
1.5'	0.44	0.2'(0.06m)
3.0'	0.11	0.5'(0.15m)
4.5'	0.05	0.7'(0.21m)
6.0'	0.03	0.9'(0.27m)
7.5'	0.02	1.2'(0.37m)
9.0'	0.01	1.4'(0.43m)

0° Spread: 9.0°      90° Spread: 9.0°

**4', 3000K, 80+CRI**

**Polar Candela Distribution**

Lumen: 527lm



**Illuminance at a Distance**

Distance	Center Beam FC	Beam Width
3.0'	0.62	8.9'(2.71m)
6.0'	0.15	17.9'(5.45m)
9.0'	0.07	26.8'(8.17m)
12.0'	0.04	35.7'(10.88m)
15.0'	0.02	44.7'(13.62m)
18.0'	0.02	53.6'(16.33m)

0° Spread: 112.2°      90° Spread: 94.9°