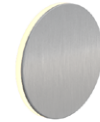


L391

INTERIOR

Wall-mount | For walls, and stairs

● Dry location



Ordering Information

Clear Form

Date : _____

Quantity : _____

Project : _____

Note : _____

Type : _____

Specifications

Luminaire | Example Code: L391-2-W30H-F-MK1-S3

Product	Version	CCT & CRI ¹	Glass Cover	Trim Finish
L391			F	S3
	1 1W 2 2W	W22S 2200K 80+ W27H 2700K 90+ W30H 3000K 90+ W35H 3500K 90+ W41H 4100K 90+	F frosted	Stainless Steel Finish: S3 stainless steel 303

System Components (Ordered Separately)

Remote Driver : _____

* Consult MP Lighting Website or Factory.

Important Notes

Specification

1. Refer to pg.02 - Electrical for Light Quality & Colour Consistency details.

Warranty Notes & Disclaimer

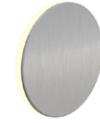
Malfunction and damage to product due to incompatible dimming system or misuse will not be covered under warranty. Consult MP Lighting for recommended drivers. If the fixture has an option to be installed with a dimming control system, consult a dimming system manufacturer with minimum load before installing. MP Lighting reserves the right, at its sole discretion, at any time and without notice, to make design changes to any of our products. Consult MP Lighting website for most updated documentation.

L391

INTERIOR

Wall-mount | For walls, and stairs

● Dry location



Performance

Wattage	Forward Voltage	Forward Current	Power Consumption Budget per fixture (including driver)	LED output	Fixture Output
1W	~3V DC	350mA	1.3W	110 lm	10 lm
2W	~3V DC	700mA	2.6W	275 lm	29 lm

Application

Environment	Dry Location approved. IP 40
Mounting	Comes with steel flange that mounts to pre-installed standard 4" (102mm) octagonal back box (not included), 1-1/2"(38mm) deep minimum, and 1/4"(6mm) setback from finished surface.

Electrical

Power Supplies	Remote LED drivers (120-277V AC input, constant current output): Fixtures to be wired in series.
Control	On/off control Dimming (consult factory): ELV or 0-10V dimming with appropriate drivers Other options (consult factory): TRIAC/MLV, DMX, DALI, Casambi, Power over Ethernet

Luminaire Construction

LED Light Source	W22S = CCT: 2200K, CRI (Ra): 80+, Colour Consistency: 3SDCM W27H = CCT: 2700K, CRI (Ra): 90+, Colour Consistency: 2SDCM W30H = CCT: 3000K, CRI (Ra): 90+, Colour Consistency: 2SDCM W35H = CCT: 3500K, CRI (Ra): 90+, Colour Consistency: 3SDCM (Contact factory for 2SDCM option) W41H = CCT: 4100K, CRI (Ra): 90+, Colour Consistency: 3SDCM
Standard Compliance	✓ADA-compliant ✓WELL standard – Feature 58: Color Quality
Weight	N/A
Material	Fixture: Stainless steel (303) with polycarbonate lens, RoHS compliant.
Supplied with	Standard installation housing: Comes with a steel mounting flange.
Warranty & LED Life	5 years limited warranty Estimated useful life of LED is 50,000 hours.

Ordered Separately

System Components	Power Supplies: remote driver Please consult factory or visit Recommended Drivers for available driver options.
-------------------	---

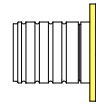
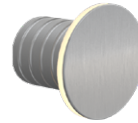
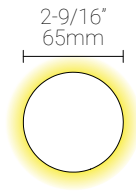
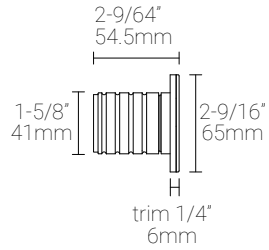
Mounting Options & Dimensions

LED Insert Dimensions

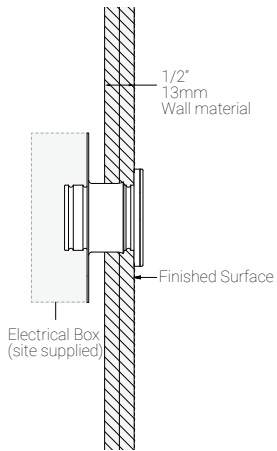
Fixture

Top View

3D View

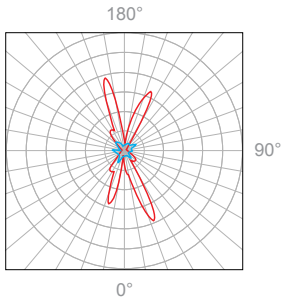


Wall Installation (shown with a mounting flange)



1W, 3000K, 90+ CRI

Polar Candela Distribution



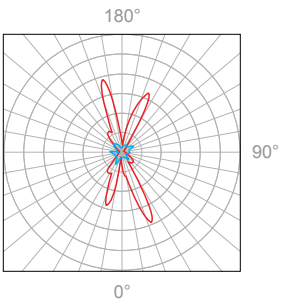
Illuminance at a Distance

Distance		Center Beam fc	Beam Width			
3.0ft	0.91m	0.04fc	9.9ft	3.02m	0.7ft	0.21m
6.0ft	1.83m	0.01fc	19.8ft	6.04m	1.4ft	0.43m
9.0ft	2.74m	0.00fc	29.7ft	9.05m	2.2ft	0.67m
12.0ft	3.66m	0.00fc	39.6ft	12.07m	2.9ft	0.88m
15.0ft	4.57m	0.00fc	49.5ft	15.09m	3.6ft	1.10m
18.0ft	5.49m	0.00fc	59.4ft	18.11m	4.3ft	1.31m

Delivered Lumen: 10lm
 ■ Vertical Beam Spread: 117.6°
 ■ Horizontal Beam Spread: 13.7°

2W, 3000K, 90+ CRI

Polar Candela Distribution



Illuminance at a Distance

Distance		Center Beam fc	Beam Width			
3.0ft	0.91m	0.09fc	9.9ft	3.02m	0.7ft	0.21m
6.0ft	1.83m	0.02fc	19.8ft	6.04m	1.4ft	0.43m
9.0ft	2.74m	0.01fc	29.7ft	9.05m	2.2ft	0.67m
12.0ft	3.66m	0.01fc	39.6ft	12.07m	2.9ft	0.88m
15.0ft	4.57m	0.00fc	49.5ft	15.09m	3.6ft	1.10m
18.0ft	5.49m	0.00fc	59.4ft	18.11m	4.3ft	1.31m

Delivered Lumen: 29lm
 ■ Vertical Beam Spread: 117.6°
 ■ Horizontal Beam Spread: 13.7°