

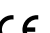




L504

- Application** Applicable for Showcases, kitchen cabinets, restaurant millwork, or wine cellars.
Recommended Projects - Commercial, Institutional, Retail, Clinic, Hospitality, Religious, Educational, Architecture
- IP Rating** 40
- Mounting** Fully-recessed fixture body mounts to millwork with friction fit spring clip. Comes with 2' (610mm) wire lead.
- Electrical** 12V DC
Power by remote constant current driver.
*See website for recommended drivers
*Remote emergency driver / inverter options available (consult factory).
- Power Consumption** 4.0 Watt (at 350mA, 3 Watt)
- Light Output** 3.0 Watt, 80~197lm
*For photometric data, see page 02
- Warranty** 5 years limited warranty
Estimated useful life of LED is 50,000 hours.
- Material** Anodized aluminum. RoHS compliant.
- Weight** 0.37lbs (0.167kg).
- Cutout Size:** Ø2-1/2" (Ø64mm)
- Approval**   

Type:

Project:

Modified:

Quantity:

Notes:

Emergency Driver options (remote):

MP Lighting Emergency Backup Unit.
Input: 100-277V, 50/60Hz / Output: 11-36V, 16W
Bodine Emergency Micro Inverter
Input: 120/277V, 50/60Hz / Output: 120/277V, 60Hz, 20W

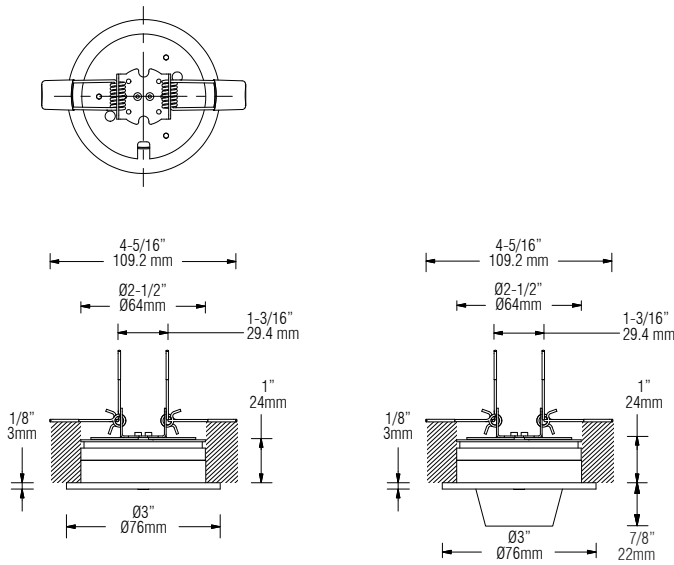
Order Guide

Example: L504-F-3-W27S-N-NA-MA

Code	Mount	Wattage	Color	Beam	Accessories	Input Voltage	Finish
L504	F	3				D	
	F = fully recessed	3 = 3 x 1W	W22S = 2200K, 80+CRI W27S = 2700K, 80+CRI W30S = 3000K, 80+CRI W35S = 3500K, 80+CRI W41S = 4100K, 80+CRI W27H = 2700K, 90+CRI W30H = 3000K, 90+CRI W35H = 3500K, 90+CRI	N = narrow flood (30°) F = flood (60°)	NA = no accessory SH = metal shroud, silver SHB = metal shroud, black <i>*Shroud is only available in silver or black finish</i>	D = DC	MA = matte clear anodized BA = black anodized BZ = bronze anodized WH = white powder coating



DIMENSION:



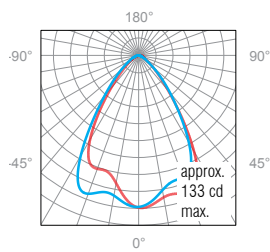
PHOTOMETRIC DATA:

3W, 3000K, Clear lens, 60° Beam

Polar Candela Distribution

Illuminance at a Distance

Lumen: 154lm, No accessory



	Center Beam FC	Beam Width
1.0'	133	1.2'
2.0'	33.3	2.4'
3.0'	14.8	3.6'
4.0'	8.31	4.8'
5.0'	5.32	5.9'
6.0'	3.70	7.1'

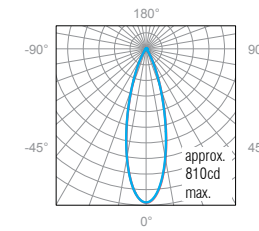
0° Spread: 70.8°

3W, 3000K, Clear lens, 30° Beam

Polar Candela Distribution

Illuminance at a Distance

Lumen: 197lm, no accessory



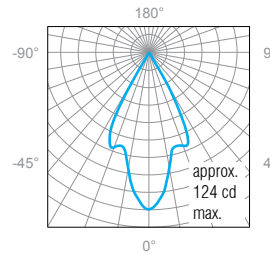
	Center Beam FC	Beam Width
1.0'	810	0.5' (0.15m) 0.5' (0.15m)
2.0'	203	0.9' (0.27m) 0.9' (0.27m)
3.0'	90.0	1.4' (0.42m) 1.4' (0.42m)
4.0'	50.6	1.9' (0.58m) 1.9' (0.58m)
5.0'	32.4	2.3' (0.70m) 2.3' (0.70m)
6.0'	22.5	2.8' (0.85m) 2.8' (0.85m)

0° Spread: 26.2° 90° Spread: 26.2°

Polar Candela Distribution

Illuminance at a Distance

Lumen: 80lm, metal shroud



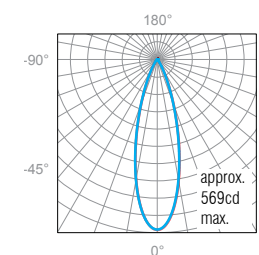
	Center Beam FC	Beam Width
1.0'	124	1.0'
2.0'	31.0	2.0'
3.0'	13.8	3.1'
4.0'	7.75	4.1'
5.0'	4.96	5.1'
6.0'	3.44	6.1'

0° Spread: 54.2°

Polar Candela Distribution

Illuminance at a Distance

Lumen: 168lm, metal shroud



	Center Beam FC	Beam Width
1.0'	570	0.4'
2.0'	142	0.8'
3.0'	63.3	1.2'
4.0'	35.6	1.6'
5.0'	22.8	2.0'
6.0'	15.8	2.4'

0° Spread: 22.9°

