

# L700

EXTERIOR | INTERIOR  
Sign Light | For walls

• Wet, Damp, and Dry location



Engraving Option  
(Only available with MA)

## Ordering Information

Clear Form

Date : \_\_\_\_\_

Project : \_\_\_\_\_

Type : \_\_\_\_\_

Quantity : \_\_\_\_\_

Note : \_\_\_\_\_

## Specifications

Luminaire | Example Code: L700-2-W30H-MA

Product	Version	CCT & CRI <sup>1</sup>	Engraving (optional) <sup>2</sup>	Finish
<b>L700</b>	1 1W	<b>W22S</b> 2200K 80+	<b>E</b> engraving	<b>MA</b> matte clear anodized <b>BK</b> black powder coat
	2 2W	<b>W27H</b> 2700K 90+		
		<b>W30H</b> 3000K 90+		
		<b>W35H</b> 3500K 90+		
		<b>W41H</b> 4100K 90+		

## System Components (Ordered Separately)

Remote Driver : \_\_\_\_\_

\* Consult MP Lighting Website or Factory.

## Important Notes

### Specifications

1. Refer to pg.2 - for Light Quality & Colour Consistency details.
2. Engraving is only available with the MA finish.

### Warranty Notes & Disclaimer

Malfunction and damage to product due to incompatible dimming system or misuse will not be covered under warranty. Consult MP Lighting for recommended drivers. If the fixture has an option to be installed with a dimming control system, consult a dimming system manufacturer with minimum load before installing. MP Lighting reserves the right, at its sole discretion, at any time and without notice, to make design changes to any of our products. Consult MP Lighting website for most updated documentation.

# L700

EXTERIOR | INTERIOR  
Sign Light | For walls

• Wet, Damp, and Dry location



Engraving Option  
(Only available with MA)

## Performance

Wattage	Forward Current	Power Consumption Budget per fixture (including driver)	LED output (Source)	Fixture Output (Delivered)
1W	350mA	1.3W	110 lm	57.6 lm
2W	700mA	2.6W	275 lm	113.9 lm

## Application

Environment	Dry / Damp / Wet Location approved. IP 66.
Mounting	Mounts to horizontal oriented single gang box. <b>Box opening: Width   2-3/8" (60mm) X Height   3-1/4" (83mm).</b> <b>Recommended single gang box: Iberville BCMBD-1-K</b>

## Electrical

Power Supplies	Non-dimmable integral driver included (100-240V AC input). <a href="#">LED3W350L</a> or <a href="#">LED4W700</a> Compatible with remote driver for wet locations (not included).
Control	<b>On/off control</b> <b>Dimming:</b> ELV or 0-10V dimming with appropriate drivers <b>Other options (consult factory):</b> TRIAC/MLV, DMX, DALI, Casambi, Power over Ethernet

## Luminaire Construction

LED Light Source	<b>W22S</b> = CCT: 2200K, CRI (Ra): 80+, Colour Consistency: 3SDCM <b>W27H</b> = CCT: 2700K, CRI (Ra): 90+, Colour Consistency: 2SDCM <b>W30H</b> = CCT: 3000K, CRI (Ra): 90+, Colour Consistency: 2SDCM <b>W35H</b> = CCT: 3500K, CRI (Ra): 90+, Colour Consistency: 3SDCM (Contact factory for 2SDCM option) <b>W41H</b> = CCT: 4100K, CRI (Ra): 90+, Colour Consistency: 3SDCM
Standard Compliance	✓ADA-compliant ✓WELL standard – Feature 58: Color Quality
Weight	1.5 lbs (0.68 kg). Typical Aluminum Fixture.
Material	<b>Fixture:</b> machined marine-grade aluminum
Supplied with	N/A
Warranty & LED Life	5 years limited warranty Estimated useful life of LED is 50,000 hours.

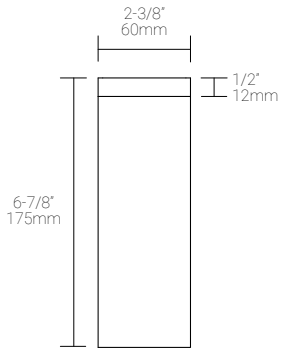
## Ordered Separately

System Components	<b>Power supplies:</b> remote driver for wet locations. Please consult factory or visit <a href="#">Recommended Drivers</a> for available driver options.
-------------------	--

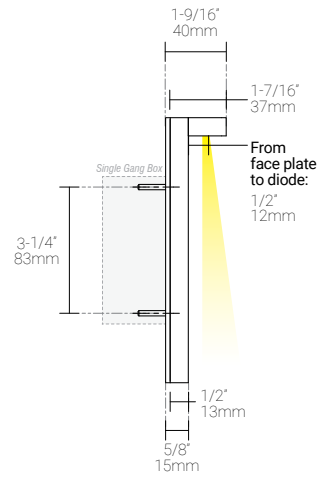
Mounting Options & Dimensions

LED Insert Dimensions

Fixture



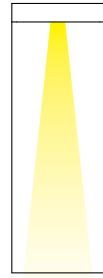
Side View



3D View



Beam



\* Recommended Back box:  
Iberville | BCMBD-1-K

Appendix

Aluminum Finishes



MA matte clear anodized



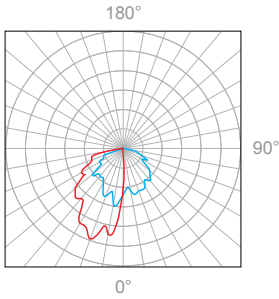
BK black powder coat



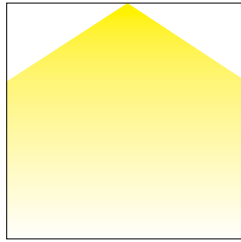
MA matte clear anodized  
EN engraved

1W, 3000K, 90+ CRI

Polar Candela Distribution



Beam Width: 120°



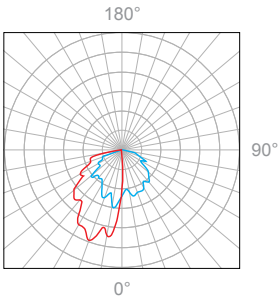
Illuminance at a Distance

Distance		Center Beam fc	Beam Width			
1.5ft	0.46m	7.30fc	3.0ft	0.91m	1.6ft	0.49m
3.0ft	0.91m	1.82fc	6.0ft	1.82m	3.1ft	0.94m
4.5ft	1.37m	0.81fc	9.0ft	2.74m	4.7ft	1.43m
6.0ft	1.83m	0.46fc	12.1ft	3.68m	6.2ft	1.88m
7.5ft	2.29m	0.29fc	15.1ft	4.60m	7.8ft	2.37m
9.0ft	2.74m	0.20fc	18.1ft	5.52m	9.3ft	2.83m

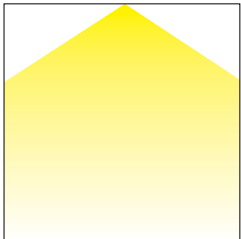
Delivered Lumen: 57.6lm  
 ■ Vertical Beam Spread: 90.2°  
 ■ Horizontal Beam Spread: 54.7°

2W, 3000K, 90+ CRI

Polar Candela Distribution



Beam Width: 120°



Illuminance at a Distance

Distance		Center Beam fc	Beam Width			
1.5ft	0.46m	14.4fc	3.0ft	0.91m	1.6ft	0.49m
3.0ft	0.91m	3.61fc	6.0ft	1.82m	3.1ft	0.94m
4.5ft	1.37m	1.6fc	9.0ft	2.74m	4.7ft	1.43m
6.0ft	1.83m	23fc	12.1ft	3.68m	6.2ft	1.88m
7.5ft	2.29m	15fc	15.1ft	4.60m	7.8ft	2.37m
9.0ft	2.74m	11fc	18.1ft	5.52m	9.3ft	2.83m

Delivered Lumen: 113.9lm  
 ■ Vertical Beam Spread: 90.3°  
 ■ Horizontal Beam Spread: 54.7°