



L73

- Application** Interior directional light for wall, picture or signage illumination.
Recommended Projects - Commercial, Institutional, Retail, Educational, Architecture
- IP Rating** 20
- Mounting** Ø2-3/8" x 1/4" (Ø60m x 6mm) canopy. Mounts to standard octagonal box (not included).
- Electrical** 6 x 1W, 350mA LEDs.
24V DC
- Power Consumption** 8W
- Light Output** 12 Watt, 487~792lm
*For photometric data, see page 02
- Warranty** 5 years limited warranty
Estimated useful life of LED is 50,000 hours.
- Material** Solid anodized aluminum, RoHS compliant.
- Weight** 0.77lbs (0.35kg)
- Approval** Dry locations. Approved to US and Canadian standards by CSA.



Emergency Driver options (remote):

- MP Lighting Emergency Backup Unit. Input:
100-277V, 50/60Hz / Output: 11-36V, 16W
- Bodine Emergency Micro Inverter. Input:
120/277V, 50/60Hz / Output: 120/277V, 60Hz, 20W

- Type:**
- Project:**
- Modified:**
- Quantity:**
- Notes:**

DISCLAIMER - When using a control system, consult dimming system manufacturer with minimum load before installing. Malfunction and damage to product due to improper dimming system installation or misuse will not be covered under warranty. Only DC Drivers are recommended for dimming systems. Consult MP Lighting for recommended drivers.

*MP Lighting reserves the right, at its sole discretion, at any time and without notice, to make design changes to any of our products.

Order Guide

Example: L73-C1-W27S-S-A-1-MA

Code	Mounting	Color	Beam	Input Voltage	Stem	Finish
L73	-			D	-	MA
C1 = 2-3/8" (60mm) x 1/4" (6.35mm)	W27S = 2700K, 80+ CRI	S = spot (12°)	D = DC	1 = 1" (25mm)	MA = matte clear anodized	
C3 = 4-5/8" (117mm) x 1/4" (6.35mm)	W30S = 3000K, 80+ CRI	N = narrow flood (30°)		X = custom		
C4 = 4-5/8" (117mm) x 1/4" (6.35mm)	W35S = 3500K, 80+ CRI	F = flood (60°)				
C21 = 2" (50.8mm) x 1/16" (1.59mm) with spring mount	W41S = 4100K, 80+ CRI					
	W20H = 2000K, 90+ CRI					
	W30H = 3000K, 90+ CRI					

Note: Standard CRI has a value of 75-82 while high CRI has 92.

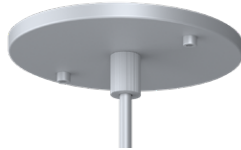
CANOPY OPTIONS & DIMENSION DRAWINGS

Canopy Images



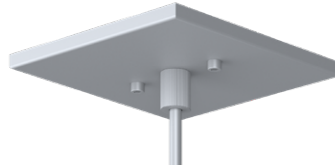
C1

2-3/8" (60mm) x 1/4" (6.35mm)



C3

4-5/8" (117mm) x 1/4" (6.35mm)



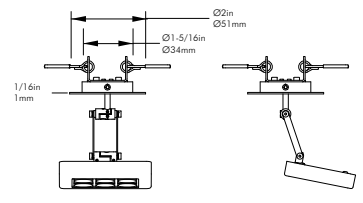
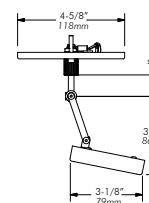
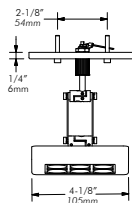
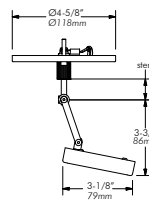
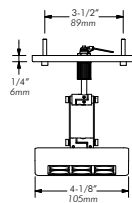
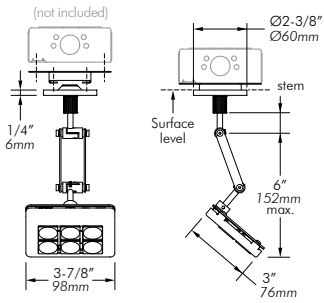
C4

4-5/8" (117mm) x 1/4" (6.35mm)



C21

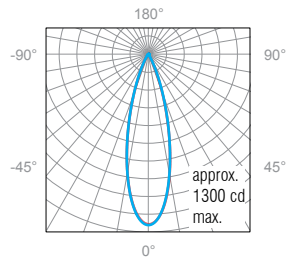
2" (50.8mm) x 1/16" (1.59mm)
with spring mount



PHOTOMETRIC:

L73
30°
3000K Std
318 lm

Polar Candela Distribution



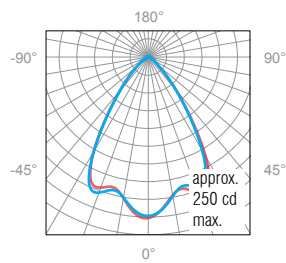
Illuminance at a Distance

	Center Beam FC	Beam Width	
4.0'	82.3	2.1'	2.1'
5.0'	52.6	2.6'	2.6'
6.0'	36.6	3.1'	3.1'
7.0'	26.9	3.6'	3.6'
8.0'	20.6	4.1'	4.1'
9.0'	16.2	4.7'	4.7'

0° Spread: 29.1° 90° Spread: 29.0°

L73
60°
3000K Std
320 lm

Polar Candela Distribution



Illuminance at a Distance

	Center Beam FC	Beam Width	
4.0'	15.6	5.5'	5.5'
5.0'	10.0	6.8'	6.9'
6.0'	6.9	8.2'	8.3'
7.0'	5.1	9.6'	9.7'
8.0'	3.9	10.9'	11.0'
9.0'	3.1	12.3'	12.4'

0° Spread: 68.6° 90° Spread: 69.2°