



# X42C

- Material** Machined aluminum with electroplated finish
- Sec. Voltage** 12V (fixture)
- Mounting**
  - C1** - Rotatable and easy to position. Canopy retrofit to octagonal backbox using custom mounting plate (included). Requires remote class II transformer (not included).
  - C3** - Rotatable and easy to position. Powers with remote 277V magnetic transformer (not included). Mounts to octagonal backbox (not included).
  - C4** - Rotatable and easy to position. Powers with remote 277V magnetic transformer (not included). Mounts to octagonal backbox (not included).
  - C21** - Rotatable and easy to position. Mounts to octagonal backbox using spring clips.
- Stem** Default 2" (51mm) Available in 1" (25mm) increments. Max. 96" (2438mm)
- Shade** Sold separately.
- Accessories** Sold separately.
- Warranty** 5 years limited warranty  
Estimated useful life of LED is 50,000 hours.
- Lamp (not included)** MR16, 50W Max. Covered glass recommended. (GE constant color lamp cannot be used with glass shade.) Also SORAA LED MR 16 lamps (10W max.) are recommended. For use with LED type MR16 check lamp manufacture for specification and compatibility.
- Approval** Dry locations. Approved to US and Canadian standards by CSA.



- Type:**
- Project:**
- Modified:**
- Quantity:**
- Notes:**

**DISCLAIMER** - When using a control system, consult dimming system manufacturer with minimum load before installing. Malfunction and damage to product due to improper dimming system installation or misuse will not be covered under warranty. Only DC Drivers are recommended for dimming systems. Consult MP Lighting for recommended drivers.

\*MP Lighting reserves the right, at its sole discretion, at any time and without notice, to make design changes to any of our products.

## Order Guide

Example: X42-C1-NS-1-NA-MC

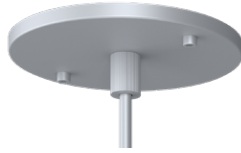
Code	Mounting	Shade (optional)	Stem	Accessories (optional)	Primary Voltage	Finish
<b>X42</b>	-				-	
	<b>C1</b> = 2-3/8" (60mm) x 1/4" (6.35mm) <b>C3</b> = 4-5/8" (117mm) x 1/4" (6.35mm) <b>C4</b> = 4-5/8" (117mm) x 1/4" (6.35mm) <b>C21</b> = 2" (50.8mm) x 1/16" (1.59mm) with spring mount	<b>NS</b> = no shade <b>SC</b> = solid metal cap <b>SCB</b> = solid metal cap, black	<b>2</b> = 2" (51mm) <b>X</b> = custom <i>*Custom length available in 1" (25mm) increments up to 96" (2438mm) long</i>	<b>NA</b> = no accessory <b>SH</b> = metal shroud <b>SHB</b> = metal shroud, black <b>ELB</b> = eggcrate louver, black <b>BE</b> = beam elongator <b>CS</b> = crystal spreader <b>IR</b> = infrared filter <b>MS</b> = mistlite spreader <b>UV</b> = ultraviolet filter <b>LSB</b> = long shroud, black <b>LH</b> = accessory holder***	<b>1</b> = 120V <b>2</b> = 277V <i>* Not applicable for C1 or C21 options.</i>	<b>MC</b> = matte chrome
			<i>*Can select multiple items. Please specify.                      ***Accessory holder required with accessories.</i>			

**CANOPY OPTIONS & DIMENSION DRAWINGS**

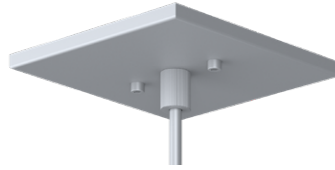
**Canopy Images**



**C1**  
2-3/8" (60mm) x 1/4" (6.35mm)



**C3**  
4-5/8" (117mm) x 1/4" (6.35mm)



**C4**  
4-5/8" (117mm) x 1/4" (6.35mm)



**C21**  
2" (50.8mm) x 1/16" (1.59mm)  
with spring mount

