



X45

- Material** Machined aluminum with electroplated finish
- Sec. Voltage** 12V (fixture)
- Mounting**
 - C1** - Rotatable and easy to position. Canopy retrofit to octagonal backbox using custom mounting plate (included). Requires remote class II transformer (not included).
 - C3** - Rotatable and easy to position. Powers with remote 277V magnetic transformer (not included). Mounts to octagonal backbox (not included).
 - C4** - Rotatable and easy to position. Powers with remote 277V magnetic transformer (not included). Mounts to octagonal backbox (not included).
 - C21** - Rotatable and easy to position. Retrofit to octagonal backbox using spring clips
- Stem** Default 2" (51mm) Available in 1" (25mm) increments. Max. 96" (2438mm)
- Shade** Sold separately.
- Accessories** Sold separately.
- Warranty** 5 years limited warranty
Estimated useful life of LED is 50,000 hours.
- Lamp (not included)** MR16, 50W Max. Covered glass recommended. (Note: GE constant color lamp cannot be used with glass shade.) For use with LED type MR16 check lamp manufacture for specification and compatibility.
- Approval** Dry locations. Approved to US and Canadian standards by CSA.



- Type:**
- Project:**
- Modified:**
- Quantity:**
- Notes:**

DISCLAIMER - When using a control system, consult dimming system manufacturer with minimum load before installing. Malfunction and damage to product due to improper dimming system installation or misuse will not be covered under warranty. Only DC Drivers are recommended for dimming systems. Consult MP Lighting for recommended drivers.

*MP Lighting reserves the right, at its sole discretion, at any time and without notice, to make design changes to any of our products.

Order Guide

Example: X45-C1-NS-2-NA-1-MC

Code	Mounting	Shade (optional)	Stem	Accessories (optional)	Primary Voltage	Finish
X45						
	C1 = 2-3/8" (60mm) x 1/4" (6.35mm) C3 = 4-5/8" (117mm) x 1/4" (6.35mm) C4 = 4-5/8" (117mm) x 1/4" (6.35mm) C21 = 2" (50.8mm) x 1/16" (1.59mm) with spring mount	NS = no shade SM = solid metal cone SMB = solid metal cone, black <i>* Shades are not recommended with LED lamps.</i>	2 = 2" (51mm) X = custom <i>* Custom length available in 1" (25mm) increments up to 96" (2438mm) long</i>	NA = no accessory SH = metal shroud SHB = metal shroud, black ELB = eggcrate louver, black BE = beam elongator CS = crystal spreader IR = infrared filter MS = mistlite spreader UV = ultraviolet filter LSB = long shroud, black LH = accessory holder***	1 = 120V 2 = 277V 4 = 230V~240V <i>* Not applicable for C1 or C21 option.</i>	MC = matte chrome

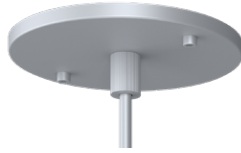
**Can select multiple items. Please specify.
 **Accessory holder required with accessories.*

CANOPY OPTIONS & DIMENSION DRAWINGS

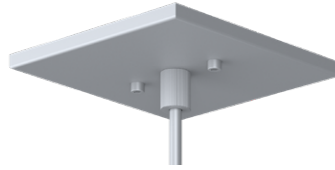
Canopy Images



C1
2-3/8" (60mm) x 1/4" (6.35mm)



C3
4-5/8" (117mm) x 1/4" (6.35mm)



C4
4-5/8" (117mm) x 1/4" (6.35mm)



C21
2" (50.8mm) x 1/16" (1.59mm)
with spring mount

