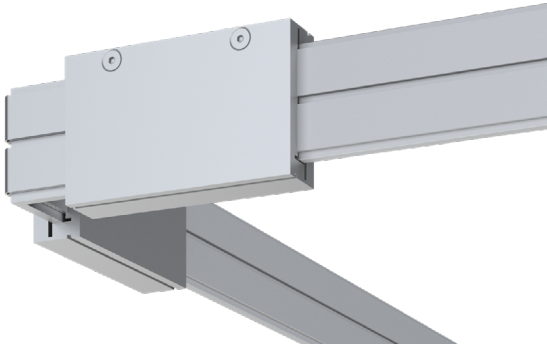


JON006

INTERIOR
Dual Circuit System | Rail connector

● Dry location



Ordering Information

Clear Form

Date :

Project :

Type :

Quantity :

Note :

Specifications

Rail connector | Example Code: JON006-MC

Product	Type	Finish ¹
JON006		MC
	C conductive I insulated	MC matte chrome

Important Notes

Specification
¹. Refer to Appendix or MP Lighting website for track system with different finish options.

Application

Environment	Dry Location approved. IP 20.
Mounting	For Dual Circuit System. Used to join sections of dual circuit rail. 90° connections.
Compatible Fixtures	L225M, L72, L73, P02, P11, P96, P96L, X01, X02, X06, X31, X42, X45, X51.

Electrical

Electrical	N/A
------------	-----

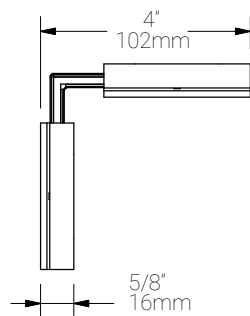
Construction

Weight	N/A
Material	Machined aluminum with electroplated finish.

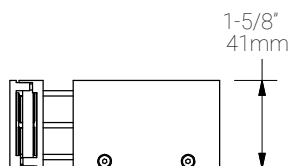
Mounting Options & Dimensions

Dimensions

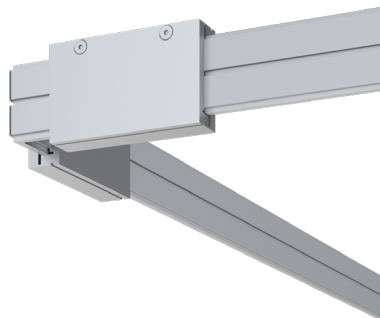
Top View



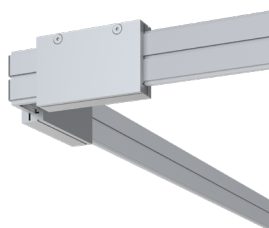
Side View



3D View



Appendix



MC matte chrome