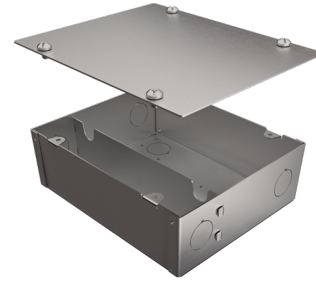


# EBX-160-ZP

**BACK BOX**  
LED driver enclosure

- Dry location



## Ordering Information

Clear Form

Date : \_\_\_\_\_

Project : \_\_\_\_\_

Type : \_\_\_\_\_

Quantity : \_\_\_\_\_

Note : \_\_\_\_\_

## Specifications

**Enclosure Box** | Example Code: EBX-160-ZP

Product

**EBX-160-ZP**

### Warranty Notes & Disclaimer

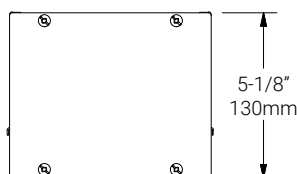
MP Lighting reserves the right, at its sole discretion, at any time and without notice, to make improvements and innovations to any of our products. Consult MP Lighting website for further details.

## Application

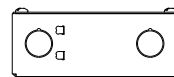
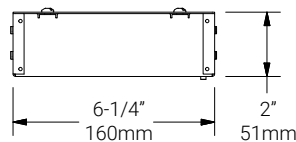
Environments	Dry Location approved. IP 30.
Weight	607.81g (1.34lbs).
Case Material	Zinc plated.
Supplied With	Driver.

## Dimensions

Back Box



Back Box | Side View



3D View

