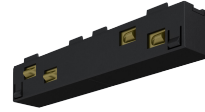


JON101-I

INTERIOR

One Circuit Track Hardware - Isolator

- Dry location



Ordering Information

Clear Form

Date : _____

Project : _____

Type : _____

Quantity : _____

Note : _____

Specifications

Isolator | Example Code: JON101-I-BK

Product	Finish ¹
JON101-I	BK black WH white

Important Notes

Specification

¹. Refer to Appendix or MP Lighting website for track system with different finish options.

Application

Environment	Dry Location approved. IP 20.
Mounting	Surface mounting or suspension mounting.
Compatible Fixtures	12V: L225M (4W & 8W) 48V: L225S (1W & 2W), L225M (4W & 8W), L225L (13W), L199 (4W & 8W), L698 (4W & 8W), and P96S-LED (8W).

Electrical

Electrical	Low Voltage 1 Circuit Track: 60W/12V 96W/48V Compatible Drivers 12V: 0-10V, ELV dimmable. 48V: 0-10V, DALI dimmable
------------	---

Construction

Weight	N/A
Material	Material: plastic Conductor: copper

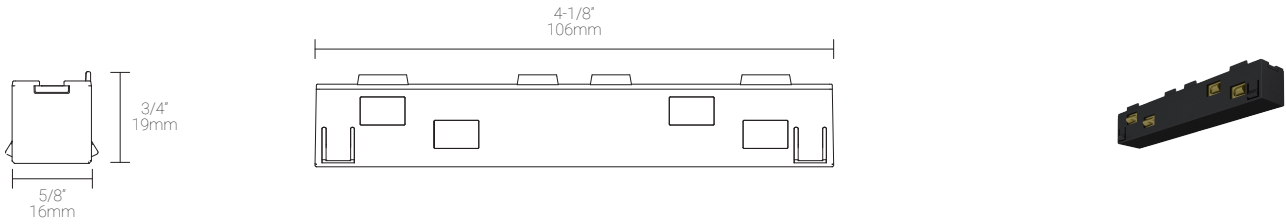
Mounting Options & Dimensions

Dimensions

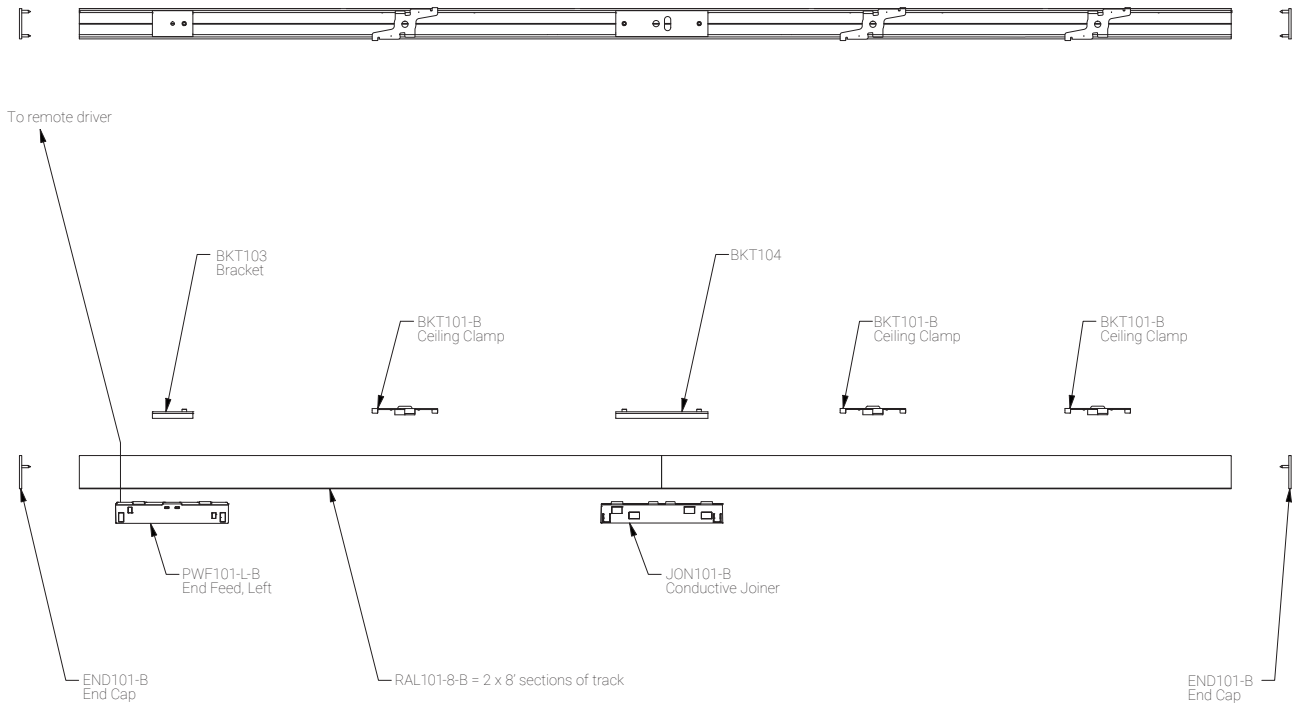
Isolator

Side View

3D View



1CT Track | All 1CT fixtures comes with Track Adapter

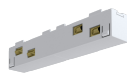


Appendix

Aluminum Finishes



BK black



WH white