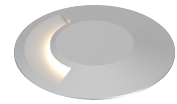
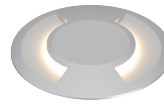


L09

INTERIOR

In-grade | For floor, ceilings, walls, and stairs

- Dry location



Ordering Information

Clear Form

Date : _____

Quantity : _____

Project : _____

Note : _____

Type : _____

Specifications

Luminaire | Example Code: L09-S-2-W30H-D-S6

Product	Aperture Height	Version	CCT & CRI ¹	Aperture	Trim Finish ²
L09	S standard (1.5mm)	1 1W	W22S 2200K 80+	S single	Aluminum Finishes: MA matte clear anodized BA black anodized BZ bronze powder coated Stainless Steel Finish: S6 stainless steel 316
	T tall (3mm)	2 2W	W27H 2700K 90+	D double	
			W30H 3000K 90+		
			W35H 3500K 90+		
			W41H 4100K 90+		

System Components (Ordered Separately)

Remote Driver : _____

* Consult MP Lighting Website or Factory.

Important Notes

Specification

1. Refer to pg.2 - for Light Quality and Colour Consistency.
2. Different finish options are only applicable to trim ring and not for LED module housing. Refer to Appendix or MP Lighting website for complete look of luminaire with different trim finish options.

Warranty Notes & Disclaimer

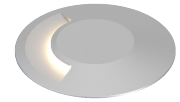
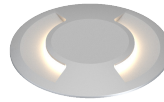
Malfunction and damage to product due to incompatible dimming system or misuse will not be covered under warranty. Consult MP Lighting for recommended drivers. If the fixture has an option to be installed with a dimming control system, consult a dimming system manufacturer with minimum load before installing. MP Lighting reserves the right, at its sole discretion, at any time and without notice, to make design changes to any of our products. Consult MP Lighting website for most updated documentation.

L09

INTERIOR

In-grade | For floor, ceilings, walls, and stairs

- Dry location



Performance

Wattage	Forward Current	Power Consumption Budget per fixture (including driver)	LED output (Source)	Fixture Output (Delivered)
1W	350mA	1.3W	110 lm	0.5~1.0 lm
2W	700mA	2.6W	220 lm	2.0~3.4 lm

Application

Environment	Ambient temperature: -4°F to 104°F (-20°C to 40°C) For lower temperature, consult MP Factory. Dry Location Approved. IP 40
Mounting	Comes with steel flange (FLG-L02-ZP) that mounts to pre-installed standard 4" (102mm) octagonal back box (not included), 1-1/2"(38mm) deep minimum, and 1/4"(6mm) setback from face of finished surface material.

Electrical

Electrical	Remote LED drivers (120-277V AC input, constant current output): Fixtures to be wired in series.
Control	On/off control or phase dimming or 0-10V dimming with appropriate remote dimmable driver.

Luminaire Construction

LED Light Source	W22S = CCT: 2200K, CRI (Ra): 80+, Colour Consistency: 3SDCM W27H = CCT: 2700K, CRI (Ra): 90+, Colour Consistency: 2SDCM W30H = CCT: 3000K, CRI (Ra): 90+, Colour Consistency: 2SDCM W35H = CCT: 3500K, CRI (Ra): 90+, Colour Consistency: 2SDCM W41H = CCT: 4100K, CRI (Ra): 90+, Colour Consistency: 3SDCM
Weight	0.35 lbs (0.158 kg). Typical Insert & Mounting Flange only.
Material	Fixture: machined solid anodized aluminum, machined brass or machined stainless steel (316) with tempered glass
Supplied with	Standard installation housing: Comes with a steel mounting flange.
Warranty & LED Life	5 years limited warranty Estimated useful life of LED is 50,000 hours.

Ordered Separately

System Components	Power supplies: remote driver
-------------------	--------------------------------------

Mounting Options & Dimensions

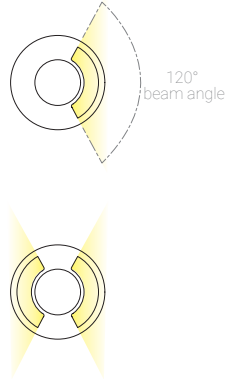
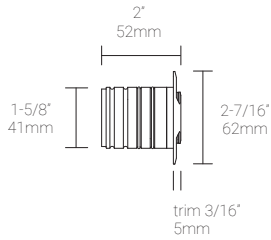
LED Insert Dimensions

Fixture | Shown with Standard Trim

Top View

3D View

Beam



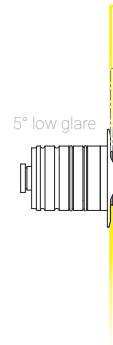
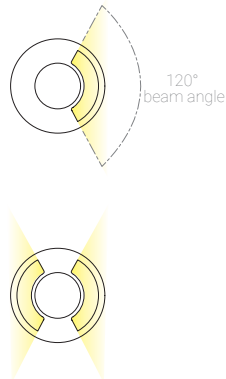
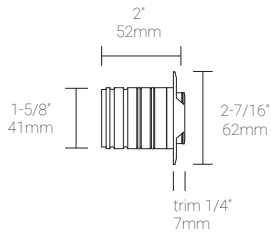
LED Insert Dimensions

Fixture | Shown with Tall Trim

Top View

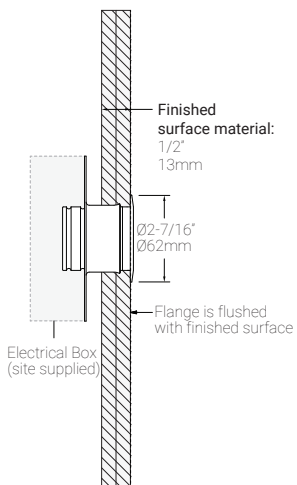
3D View

Beam



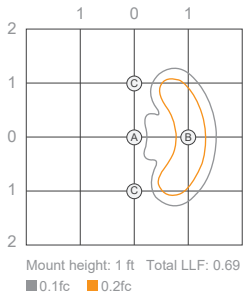
Ceiling, Wall, and Stair Riser Installation (shown with EBX-L02-ZP mounting flange)

Wall installation



1W, 3000K, 90+ CRI | Standard Trim

Isofootcandle Plot

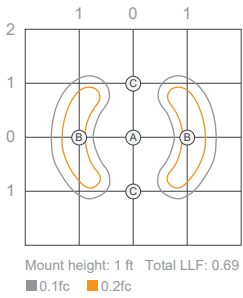


Illuminance at a Distance

Location	Center Beam fc
A	0.1fc
B	0.22fc
C	0.07fc

Delivered Lumen: 0.5lm

Isofootcandle Plot



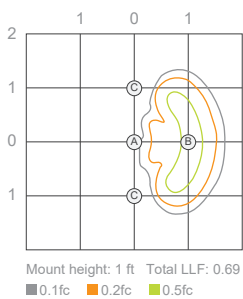
Illuminance at a Distance

Location	Center Beam fc
A	0.13fc
B	0.18fc
C	0.1fc

Delivered Lumen: 1 lm

2W, 3000K, 90+ CRI | Standard Trim

Isofootcandle Plot

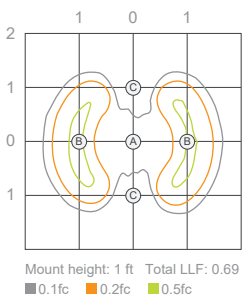


Illuminance at a Distance

Location	Center Beam fc
A	0.13fc
B	0.4fc
C	0.1fc

Delivered Lumen: 2 lm

Isofootcandle Plot



Illuminance at a Distance

Location	Center Beam fc
A	0.21fc
B	0.3fc
C	0.15fc

Delivered Lumen: 3.4 lm

Appendix

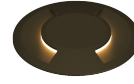
Aluminum Finishes



MA matte clear anodized

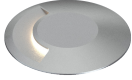


BA black anodized



BZ bronze powder coated

Stainless Steel Finish



S6 stainless steel 316

Glass Insert Options



C clear lens