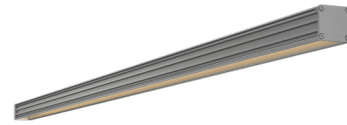


L153

EXTERIOR | INTERIOR

Linear | For stairs

- Wet, Damp, and Dry location



Ordering Information

Clear Form

Date : _____ Quantity : _____

Project : _____ Note : _____

Type : _____

Specifications

Luminaire | Example Code: L153-A-2-W30H-W-P-SI

Product	Version	Length ¹	CCT & CRI ²	Beam Angle	Lens	Finish ³
L153	2			W		SI
	2 2W	X custom	W22S 2200K 80+ W27H 2700K 90+ W30H 3000K 90+ W35H 3500K 90+ W41H 4100K 90+	W wide flood 120°	F frosted P prismatic	SI silver powder coat

System Components (Ordered Separately)

Remote Driver : _____ Control System : _____

On/Off | Dimming ELV or 0-10 dimming
Other options (consult factory) TRIAC/MLV, DMX, DALI, Casambi, PoE

Important Notes

Specification

- Minimum: 1' (305mm) Maximum: 8' (2438mm), 6" (152.4mm) increments.
- Refer to pg.02 - Electrical for Colour Consistency details.
- Different finish options are only applicable to LED light source module housing. Refer to Appendix or MP Lighting website for complete look of luminaire with different finish options.

Warranty Notes & Disclaimer

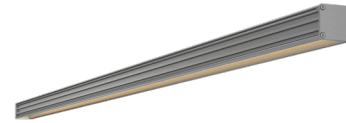
Malfunction and damage to product due to incompatible dimming system or misuse will not be covered under warranty. Consult MP Lighting for recommended drivers. If the fixture has an option to be installed with a dimming control system, consult a dimming system manufacturer with minimum load before installing. MP Lighting reserves the right, at its sole discretion, at any time and without notice, to make design changes to any of our products. Consult MP Lighting website for most updated documentation.

L153

EXTERIOR | INTERIOR

Linear | For stairs

- Wet, Damp, and Dry location



Performance

Wattage	Forward Current	Power Consumption Budget per fixture (including driver)	LED output (Source)	Fixture Output (Delivered)
2W	84mA	2.5W	220 lm	90 lm

Application

Environment	Wet, Damp, Dry Location approved. IP64.
Mounting	Recessed: Poured into concrete

Electrical

Power Supplies	Remote LED drivers (120-277V AC input, constant voltage output): Fixtures to be wired in parallel. Recommended (consult factory): TLDAV100W24. Dimmable with 0-10V dimming controller (TLC010i, not included).
Control	On/off control Dimming: ELV or 0-10V dimming with appropriate drivers Lutron model: output 25-96W 24VDC, compatible with LutronEcosystem/3-wire dimmer, dim to 0.1% with Lutron NTF-10 dimmer (recommend to load up to 80W) SC Power model: output 5-96W 24VDC, compatible with forward Triac dimmers, dim to 1% with Lutron Skylark incandescent dimmer, 4-6% with Lutron MLV dimmers (recommend to load up to 60W due to low PF and efficiency.) Other options (consult factory): TRIAC/MLV, DMX, DALI, Casambi, Power over Ethernet

Luminaire Construction

LED Light Source	W22S = CCT: 2200K, CRI (Ra): 80+, Colour Consistency: 3SDCM W27H = CCT: 2700K, CRI (Ra): 90+, Colour Consistency: 3SDCM W30H = CCT: 3000K, CRI (Ra): 90+, Colour Consistency: 3SDCM W35H = CCT: 3500K, CRI (Ra): 90+, Colour Consistency: 3SDCM W41H = CCT: 4100K, CRI (Ra): 90+, Colour Consistency: 3SDCM Consult factory for 2SDCM option.
Weight	0.56 lbs (0.25 kg). Typical Aluminum Fixture.
Material	Fixture: machined marine-grade aluminum with polycarbonate
Supplied with	Cable: 3' (914mm) factory-installed wire lead.
Warranty & LED Life	5 years limited warranty Estimated useful life of LED is 50,000 hours.

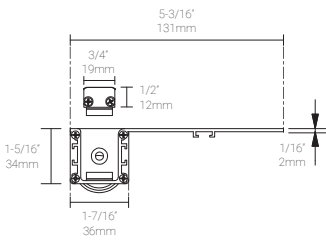
Ordered Separately

System Components	Power supplies: remote driver Please consult factory or visit Recommended Drivers for available driver options.
-------------------	---

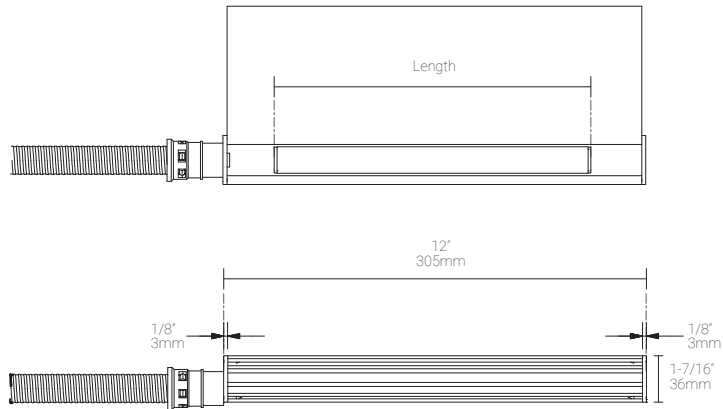
Mounting Options & Dimensions

LED Fixture Dimensions

Fixture



Bottom View & Side View

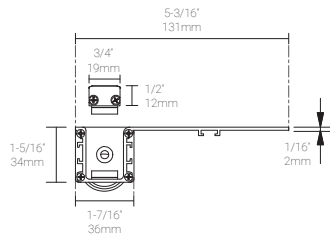


3D View



Concrete Installation

Fixture with outer concrete mount extrusion



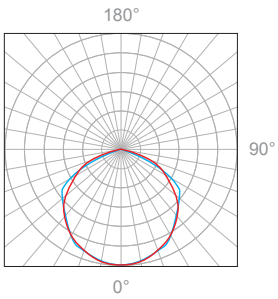
Fixture installed in concrete



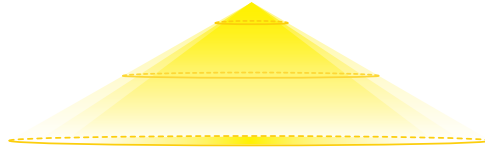
2W, 1' (305mm), 3000K, 90+ CRI

Frosted Lens

Polar Candela Distribution



Beam Width: 120°



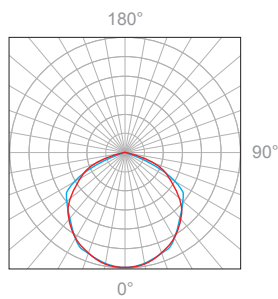
Illuminance at a Distance

Distance		Center Beam fc	Beam Width			
3.0ft	0.91m	8.53fc	10.6ft	3.23m	9.5ft	2.89m
6.0ft	1.83m	2.16fc	21.3ft	6.50m	19.1ft	5.82m
9.0ft	2.74m	1.04fc	31.9ft	9.72m	28.6ft	8.72m
12.0ft	3.66m	0.63fc	42.5ft	12.95m	38.2ft	11.64m
15.0ft	4.57m	0.43fc	53.2ft	16.21m	47.7ft	14.54m
18.0ft	5.49m	0.3fc	63.8ft	19.45m	57.3ft	17.47m

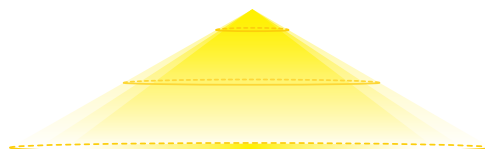
Delivered Lumen: 90.5lm
 ■ Vertical Beam Spread : 117°
 ■ Horizontal Beam Spread : 88.2°

Prismatic Lens

Polar Candela Distribution



Beam Width: 120°



Illuminance at a Distance

Distance		Center Beam fc	Beam Width			
3.0ft	0.91m	12.96fc	10.3ft	3.14m	9.6ft	2.93m
6.0ft	1.83m	3.46fc	20.7ft	6.31m	19.2ft	5.85m
9.0ft	2.74m	1.41fc	31ft	9.45m	28.8ft	8.78m
12.0ft	3.66m	0.92fc	41.4ft	12.62m	38.4ft	11.70m
15.0ft	4.57m	0.62fc	51.7ft	15.76m	48ft	14.63m
18.0ft	5.49m	0.44fc	62ft	18.90m	57.6ft	17.56m

Delivered Lumen: 152.2lm
 ■ Vertical Beam Spread : 111.7°
 ■ Horizontal Beam Spread : 87.6°

Full Spectrum

— Full Spectrum — Standard Illuminant @ 3000K — Ra≥80

