

L16

EXTERIOR

Wall-mount | For wildlife lighting

- Wet, Damp, and Dry location



Ordering Information

Clear Form

Date: _____

Quantity: _____

Project: _____

Note: _____

Type: _____

Specifications

Luminaire | Example Code: L16-1-AMB-W-V-[]-S6

Product	Wattage	CCT & CRI	Beam Angle	Plate	Mounting Kit ² (optional)	Trim Finish
L16	1	AMB	W			S6
	1 1W	AMB amber light	W wide flood 120°	V vertical H horizontal	MK1 vertical surface	S6 stainless steel 316

System Components (Ordered Separately)

Remote Driver: _____

* Consult MP Lighting Website or Factory.

Important Notes

Specification

- Refer to pg.2 - for Light quality and colour consistency details.
- Mounting kit is ordered separately (consult factory). Back box must also be purchased with MK1 kit.

Warranty Notes & Disclaimer

Malfunction and damage to product due to incompatible dimming system or misuse will not be covered under warranty. Consult MP Lighting for recommended drivers. If the fixture has an option to be installed with a dimming control system, consult a dimming system manufacturer with minimum load before installing. MP Lighting reserves the right, at its sole discretion, at any time and without notice, to make design changes to any of our products. Consult MP Lighting website for most updated documentation.

L16

EXTERIOR

Wall-mount | For wildlife lighting

- Wet, Damp, and Dry location



Performance

Wattage	Forward Current	Power Consumption Budget per fixture (including driver)	LED output (Source)	Fixture Output (Delivered)
1W	350mA	1.3W	110 lm	26-45 lm

Application

Environment	Wet / Damp / Dry Location approved. IP 66.
Mounting	Mounts to single gang box (ordered separately). Box opening: Width 2-3/8" (60.33mm) X Height 2" (50.8mm) MK1 mounting kit (optional): Recommended for easy installation on vertical surfaces (e.g. stair risers, walls). See "Mounting Options & Dimensions," or visit MK1

Electrical

Power Supplies	Non-dimmable integral driver included (100-240V AC input). Compatible with remote driver for wet locations (not included).
Control	On/off control Dimming (consult factory): ELV or 0-10V dimming with appropriate drivers Other options (consult factory): TRIAC/MLV, DMX, DALI, Casambi, Power over Ethernet

Luminaire Construction

LED Light Source	Amber LED Light
Standard Compliance	✓ADA-compliant ✓WELL standard – Feature 58: Color Quality ✓B.U.G – 0/0/0
Weight	1.83lbs (0.832kg)
Material	Fixture: Stainless steel (316)
Supplied with	Standard installation housing: Comes with LED unit with gasket, cross countersunk screws, telfon screw gaskets, and waterproof wire nuts. Driver: Non-dimmable integral driver included.
Warranty & LED Life	5 years limited warranty Estimated useful life of LED is 50,000 hours.

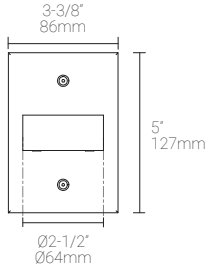
Ordered Separately

System Components	Power supplies: alternate remote driver for dimming options Please consult factory or visit Recommended Drivers for available driver options. Mounting kit: MK1 & Back box Custom rectangular back boxes: see Pg.3- Mounting Options & Dimensions.
-------------------	--

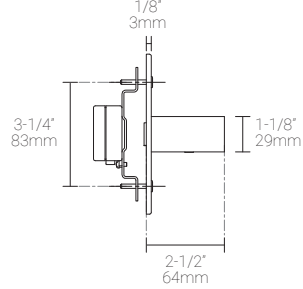
Mounting Options & Dimensions

LED Insert Dimensions

Fixture



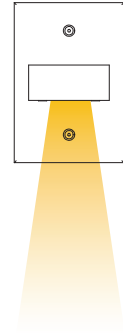
Side View



3D View



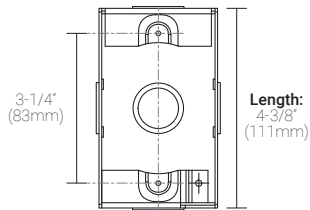
Beam



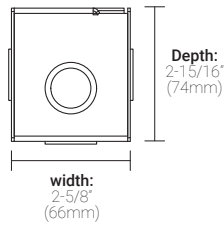
Rectangular Back Boxes

MP Lighting Single Gang Back Box | Order Code: EBX-SGB1

Top View

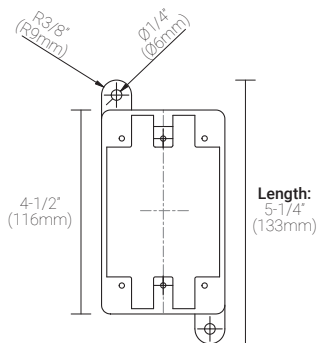


Side View

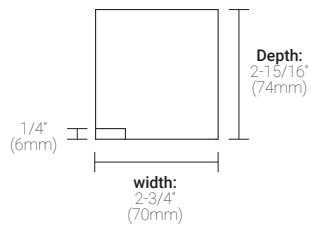


Scepter FD Back box | Order Code: EBX-SFD

Top View

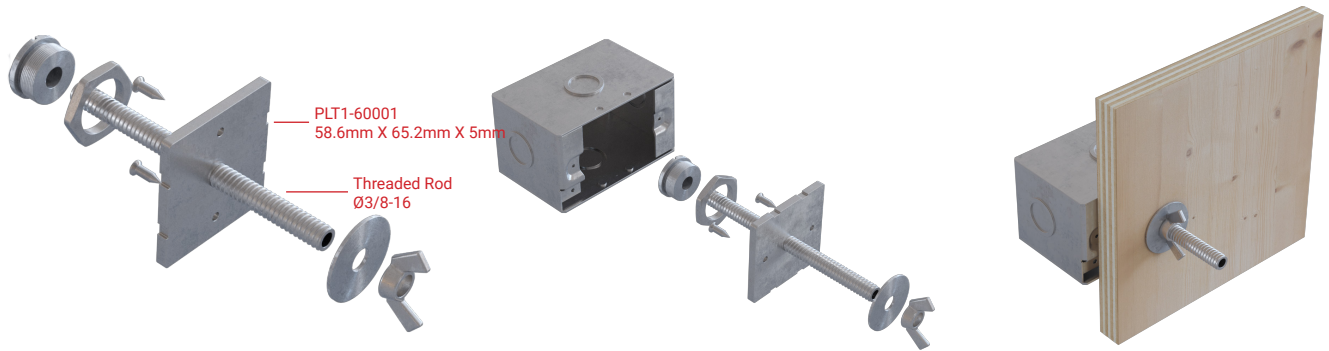


Side View



MK1 | For walls and stairs

Mounting Kit Exploding Views *(Back box not included)*



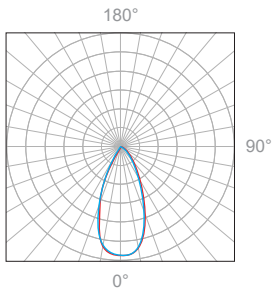
MK1-SGB1

MK1-SGB1 shown with EBX-SGB1

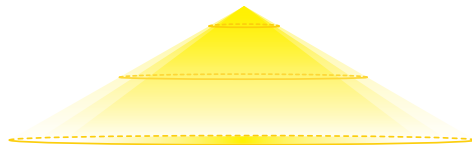
MK1-SGB1 shown with EBX-SGB1 and Plywood Form

1W, 3000K, 90+ CRI

Polar Candela Distribution



Beam Width: 120°



Illuminance at a Distance

Distance		Center Beam fc	Beam Width			
3.0ft	0.91m	2.11fc	4.3ft	1.31m	4.3ft	1.31m
6.0ft	1.83m	0.53fc	9.2ft	2.80m	9.2ft	2.80m
9.0ft	2.74m	0.23fc	13.7ft	4.18m	13.7ft	4.18m
12.0ft	3.66m	0.13fc	18.3ft	5.58m	18.3ft	5.58m
15.0ft	4.57m	0.08fc	22.9ft	6.98m	22.9ft	6.98m
18.0ft	5.49m	0.06fc	27.5ft	8.38m	27.5ft	8.38m

Delivered Lumen: 26 lm

■ Vertical Beam Spread : 74.7°

■ Horizontal Beam Spread : 70.9°