

L171W

INTERIOR

Linear | For walls, ceilings

- Wet, Damp, and Dry location



Ordering Information

Clear Form

Date : _____ Quantity : _____

Project : _____ Note : _____

Type : _____

Specifications

Luminaire | Example Code: L171-W-6-4-W30H-N-6-MP

Product	Mounting ¹	Wattage	Fixture Length ²	CCT & CRI ³	Beam Angle	Lead Length ⁴	Finish
L171	W	6	4	W30H			MP
	W standard wall bracket	6 6W/ft	4 4ft approx. Exact: 3' 9-1/3" (1148mm)	W30H 3000K 90+	S spot 12° N narrow flood 30°	6 6" (152mm) X custom length	MP matte pewter

System Components (Ordered Separately)

Remote Driver ⁵: _____ Control System: _____

On/off control
Dimming: Reverse Phase (ELV), Forward Phase (TRIAC/MLV),
 0-10V, DMX, DALI, Casambi, Power over Ethernet

Important Notes

Specification

- Refer to pg.3 - Mounting Options & Dimensions for details.
- Minimum:** 1' (305mm) **Maximum:** 6' (1829mm), 1' (305mm) increments. Please see pg.3 - Dimension drawing for details.
- Minimum:** 6" (152mm) **Maximum:** 18" (458mm), 6" (152mm) increments
- Refer to pg.2 - for Light Quality & Colour Consistency details.
- Consult [Recommended Driver](#) or factory.

Warranty Notes & Disclaimer

Malfunction and damage to product due to incompatible dimming system or misuse will not be covered under warranty. Consult MP Lighting for recommended drivers. If the fixture has an option to be installed with a dimming control system, consult a dimming system manufacturer with minimum load before installing. MP Lighting reserves the right, at its sole discretion, at any time and without notice, to make design changes to any of our products. Consult MP Lighting website for most updated documentation.

L171W

INTERIOR

Linear | For walls, ceilings

- Wet, Damp, and Dry location



Performance

Wattage	Forward Current	Power Consumption Budget per fixture (including driver)	LED output (Source)	Fixture Output (Delivered)
6W/ft	350mA	8W/ft	660 lm/ft	1190-1234 lm/ft

Application

Environment	Wet/Damp/Dry Location approved. IP 65.
Mounting	Mounts with stem and mounting bracket. Comes with 6' (1829mm) wire lead.

Electrical

Power Supplies	Remote LED drivers (120-277V AC input, constant voltage output): Fixtures to be wired in parallel. Recommended (consult factory): TLDAV100W24V04iB, 120-277V input, ELV dimming. TLDAV100W24V04iB, 120-277V input, 0-10V dimming.
Control	On/off control. Dimming: ELV or 0-10V dimming with appropriate drivers. Other options (consult factory): TRIAC/MLV, DMX, DALI, Casambi, Power over Ethernet.

Luminaire Construction

LED Light Source	W22S = CCT: 2200K, CRI (Ra): 80+, Colour Consistency: 3SDCM W27H = CCT: 2700K, CRI (Ra): 90+, Colour Consistency: 2SDCM W30H = CCT: 3000K, CRI (Ra): 90+, Colour Consistency: 2SDCM W35H = CCT: 3500K, CRI (Ra): 90+, Colour Consistency: 3SDCM (Contact factory for 2SDCM option) W41H = CCT: 4100K, CRI (Ra): 90+, Colour Consistency: 3SDCM
Standard Compliance	✓ADA-compliant ✓WELL standard – Feature 58: Color Quality
Weight	7lbs (3.17kg).
Materials	Fixture: heavy duty powder coated aluminum housing with tempered glass.
Supplied with	Standard installation hardware: Comes with mounting bracket. Cable: 6' (1829mm) factory-installed wire lead.
Warranty & LED Life	5 years limited warranty. Estimated useful life of LED is 50,000 hours.

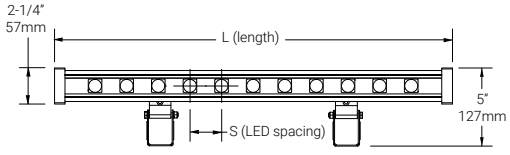
Ordered Separately

System Components	Power supplies: remote driver. Please consult factory or visit Recommended Drivers for available driver options.
-------------------	--

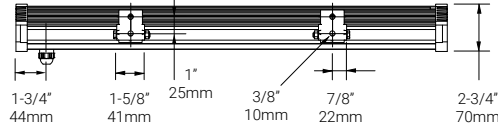
Mounting Options & Dimensions

LED Fixture Dimensions (shown with mounting bracket)

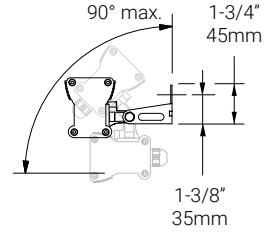
Fixture



Top View



Angle

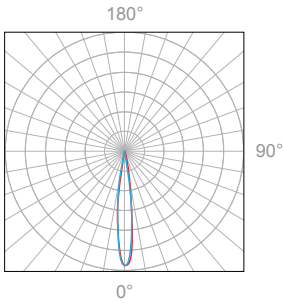


3D View

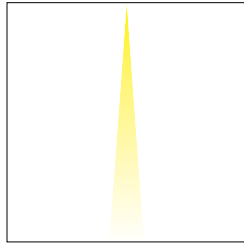


6W/ft, 3000K, 90+ CRI

Polar Candela Distribution



Beam Width: 12°

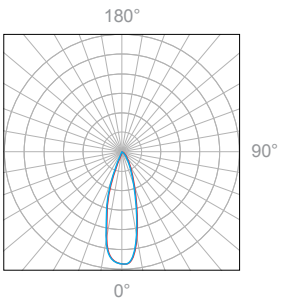


Illuminance at a Distance

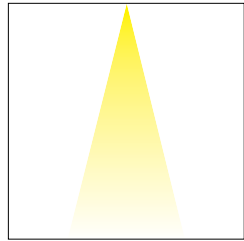
Distance		Center Beam fc	Beam Width			
3.0ft	0.91m	399fc	0.3ft	0.09m	0.3ft	0.09m
6.0ft	1.83m	169fc	0.7ft	0.21m	0.7ft	0.21m
9.0ft	2.74m	117fc	1.0ft	0.30m	1.0ft	0.30m
12.0ft	3.65m	81fc	1.3ft	0.40m	1.3ft	0.40m
15.0ft	4.57m	58fc	1.6ft	0.49m	1.6ft	0.49m
18.0ft	5.48m	39fc	2.0ft	0.61m	2.0ft	0.61m

Delivered Lumen: 616lm
 ■ Vertical Beam Spread: 12.6°
 ■ Horizontal Beam Spread: 12.5°

Polar Candela Distribution



Beam Width: 30°



Illuminance at a Distance

Distance		Center Beam fc	Beam Width			
3.0ft	0.91m	230fc	0.8ft	0.24m	0.8ft	0.24m
6.0ft	1.83m	92fc	1.6ft	0.49m	1.6ft	0.49m
9.0ft	2.74m	48fc	2.5ft	0.76m	2.5ft	0.76m
12.0ft	3.65m	29fc	3.3ft	1.01m	3.3ft	1.01m
15.0ft	4.57m	19fc	4.2ft	1.28m	4.2ft	1.28m
18.0ft	5.48m	14fc	4.9ft	1.52m	4.9ft	1.52m

Delivered Lumen: 631lm
 ■ Vertical Beam Spread: 30.7°
 ■ Horizontal Beam Spread: 30.7°

Appendix

Finishes



MP matte pewter