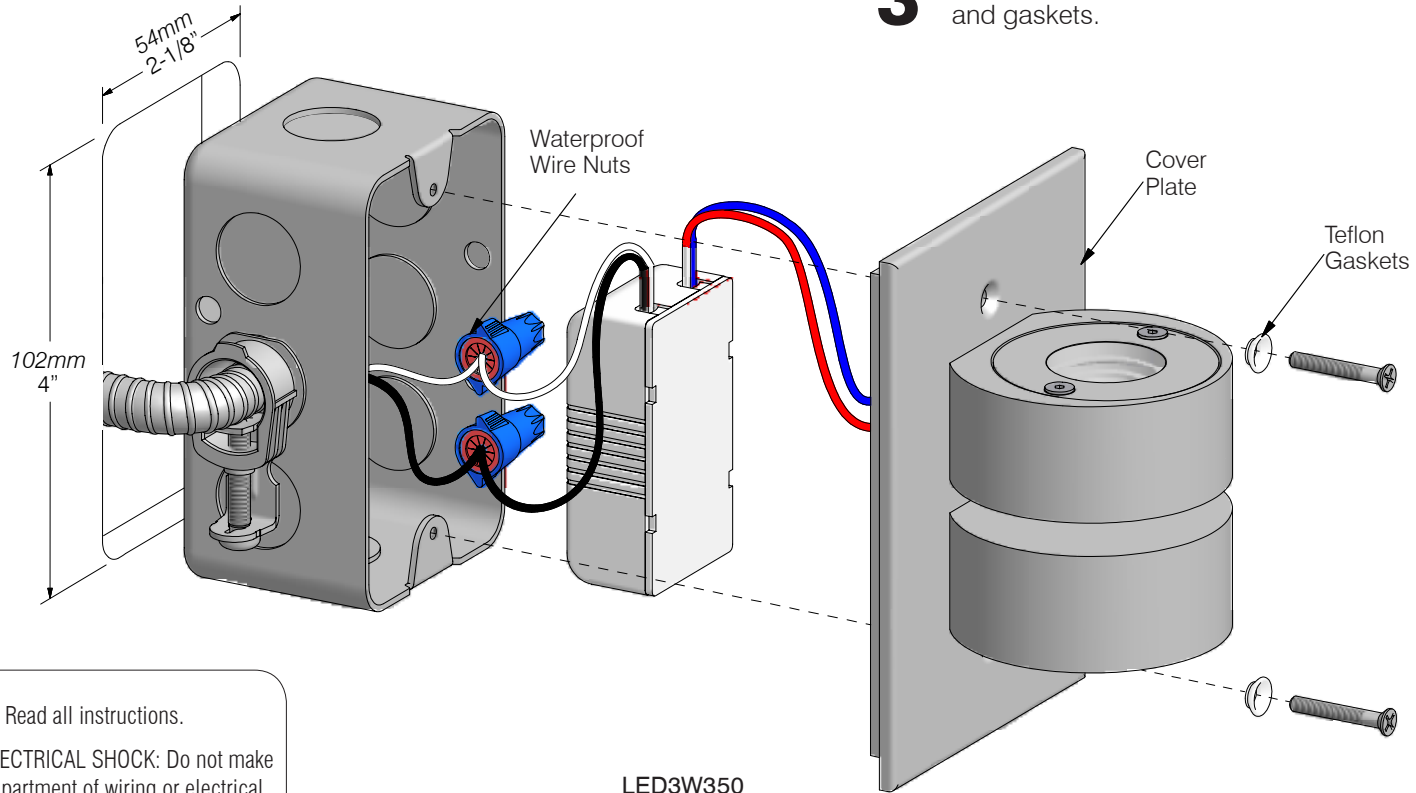


1 Connect primary to driver input wires then fit into electrical box.

2 Align cover plate to electrical box.

3 Tighten screws and gaskets.



- For outdoor application use exterior rated enclosure compatible with local electrical code.

- For cast in concrete use appropriate box rated for cast in concrete. Consult local electrical code.

CAUTION • Read all instructions.

- **WARNING: RISK OF FIRE OR ELECTRICAL SHOCK:** Do not make or alter any openings in the compartment of wiring or electrical components during installation. Do not alter or add ballasts, or any other electrical components.

- Installation and use of this fixture mounting assembly requires a person familiar with the construction and operation of luminaire electrical systems and the hazards involved, if not qualified, do not attempt installation.

- Turn off power before installation.

- Do not over tighten screws.

- Do not spray water on fixture during cleaning. Avoid using detergents with hand softeners, anti-bacterial agents, glass cleaners or acrylic cleaning products.

- **KEEP THESE INSTALLATION INSTRUCTIONS.**

LED3W350
AC Input Voltage: 100~240V, 50/60Hz
DC Output Current: 350mA Constant

Parts

- | | |
|----------------------------|---|
| • LED unit w/ gasket | 1 |
| • Cross countersunk screws | 2 |
| • Teflon screw gaskets | 2 |
| • LED driver 3W 350mA | 1 |
| • Waterproof wire nuts | 2 |

Tools

- Phillips screwdriver *not included*

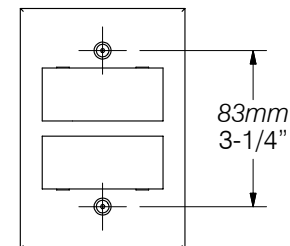
Qty.

Remote Driver Option

Connect fixture wires directly to low voltage box leads.

Maintenance

Use a soft cloth to remove any fingerprints.



LED17
Installation Instructions