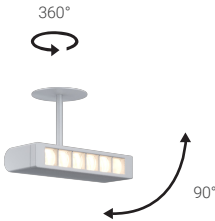


L250

INTERIOR

Spotlights | For ceilings, walls

● Dry location



Ordering Information

Clear Form

Date :

Quantity :

Project :

Note :

Type :

Specifications

Luminaire | Example Code: L250-C3-6-W30H-N-S-2-MA

Product	Canopy ¹	Version	CCT & CRI	Beam Angle	Stem Length ²	Finish ³
L250		6				
	C1	6 6W	W22S 2200K 80+	S spot 20°	2 2" (51mm)	Aluminum Finishes: MA matte clear anodized BA black anodized
	C3		W27H 2700K 90+	N narrow flood 40°	X custom length	
	C4		W30H 3000K 90+	F flood 60°		
	C21		W35H 3500K 90+			
	C23		W41H 4100K 90+			

System Components (Ordered Separately)

Remote Driver :

* Consult MP Lighting Website or Factory.

Important Notes

Specification

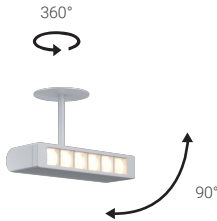
1. See pg.3 - for different canopy options and its dimensions.
2. 1" (25mm) increments to maximum of 8' (2438mm). Minimum 4" (102mm) stem for C23 canopy.
BA finish not available with stems over 4' (1219mm)
3. Refer to Appendix or MP Lighting website for complete look of luminaire with different finish options. Please consult factory for custom finish for shrouds.

Warranty Notes & Disclaimer

Malfunction and damage to product due to incompatible dimming system or misuse will not be covered under warranty. Consult MP Lighting for recommended drivers. If the fixture has an option to be installed with a dimming control system, consult a dimming system manufacturer with minimum load before installing. MP Lighting reserves the right, at its sole discretion, at any time and without notice, to make design changes to any of our products. Consult MP Lighting website for most updated documentation.

L250

INTERIOR
Spotlights | For ceilings, wall
● Dry location



Performance

Wattage	Forward Current	Power Consumption Budget per fixture (including driver)	LED output (Source)	Fixture Output (Delivered)
6W	350mA	8W	660 lm	TBD

Application

Environment	Dry Location approved. IP 20.
Mounting	Mounts to a 4" octagonal box using the mounting canopy.

Electrical

Power Supplies	Remote LED drivers (120-277V AC input, constant current output): Fixtures to be wired in series. OR Remote LED drivers (120-277V AC input, constant voltage output): Fixtures to be wired in parallel.
Control	On/off control Dimming: ELV or 0-10V dimming with appropriate drivers Other options (consult factory): TRIAC/MLV, DMX, DALI, Casambi, Power over Ethernet

Luminaire Construction

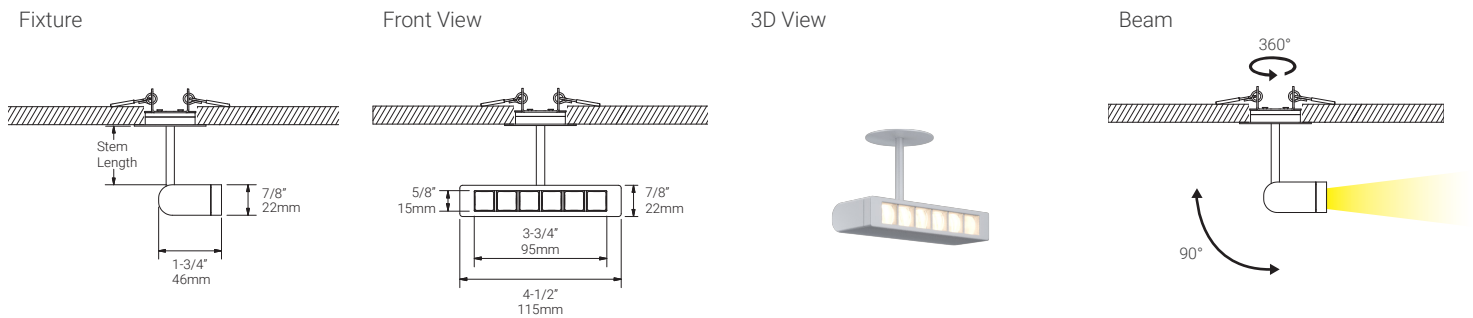
LED Light Source	W22S = CCT: 2200K, CRI (Ra): 80+, Colour Consistency: 3SDCM W27H = CCT: 2700K, CRI (Ra): 90+, Colour Consistency: 2SDCM W30H = CCT: 3000K, CRI (Ra): 90+, Colour Consistency: 2SDCM W35H = CCT: 3500K, CRI (Ra): 90+, Colour Consistency: 2SDCM W41H = CCT: 4100K, CRI (Ra): 90+, Colour Consistency: 3SDCM
Weight	N/A
Material	Fixture: machined marine-grade aluminum
Supplied with	Standard installation housing: Comes with a canopy, a universal crossbar, two hex socket head screws, two wire-nuts, and an allen key.
Warranty & LED Life	5 years limited warranty Estimated useful life of LED is 50,000 hours.

Ordered Separately

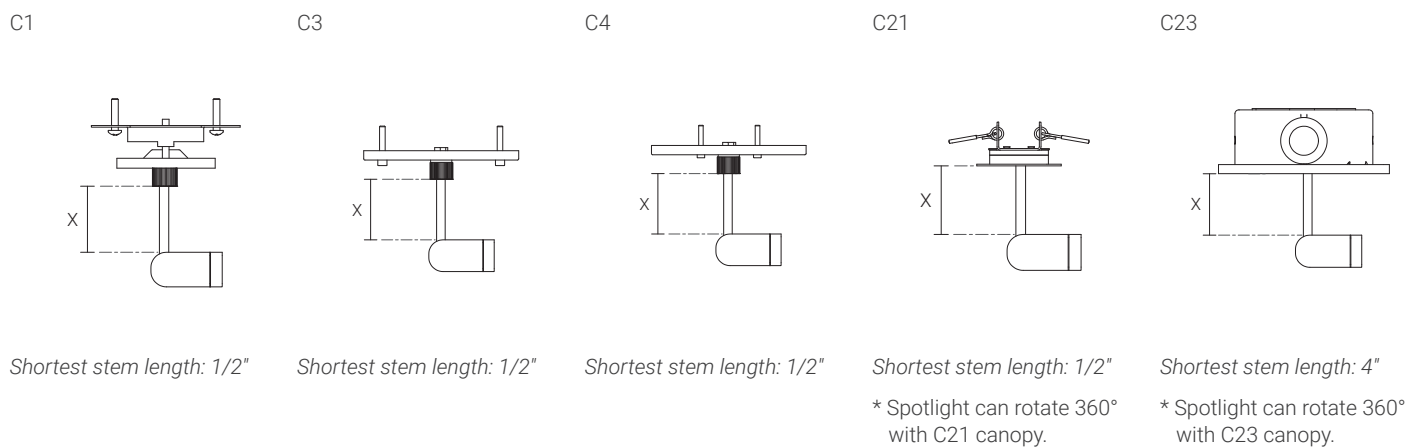
System Components	Power supplies: remote driver Please consult factory or visit Recommended Drivers for available driver options.
-------------------	---

Mounting Options & Dimensions

LED Fixture Dimensions (shown with C21 canopy)



Measurement of Custom Stem Length (X)



Appendix

Aluminum Finishes



Mounting Options & Dimensions

C1



Mounting Options & Dimensions

C3

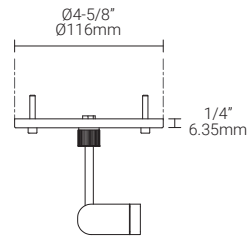
Canopy



Fixture with Canopy

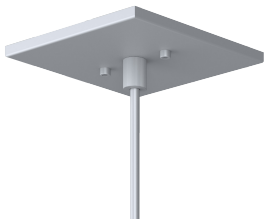


Dimensions



C4

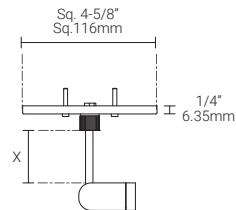
Canopy



Fixture with Canopy



Dimensions



C21

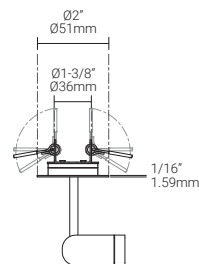
Canopy



Fixture with Canopy



Dimensions



* Spotlight can rotate 360° with C21 canopy.

C23

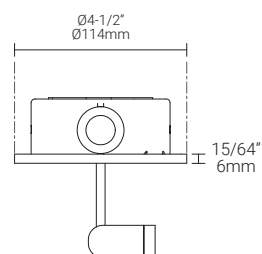
Canopy



Fixture with Canopy



Dimensions



* Spotlight can rotate 360° with C23 canopy.