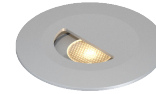


L373

INTERIOR

In-grade | For floor, ceilings, walls, and stairs

- Dry location



Ordering Information

Clear Form

Date :	_____	Quantity :	_____
Project :	_____	Note :	_____
Type :	_____		_____

Specifications

Luminaire | Example Code: L373-2-W30H-N-C-S6

Product	Wattage	CCT & CRI	Beam Angle	Lens	Trim Finish ¹
L373					
	1 1W	W22S 2200K 80+	S spot 12°	C clear	Aluminum Finishes: MA matte clear anodized BA black anodized BZ bronze powder coated Stainless Steel Finish: S6 stainless steel 316
	2 2W	W27H 2700K 90+	N narrow flood 30°	F frosted	
		W30H 3000K 90+	W wide flood 120°		
		W35H 3500K 90+			
		W41H 4100K 90+			

System Components (Ordered Separately)

Remote Driver :	_____	Control System :	_____
			On/Off Dimming ELV or 0-10 dimming Other options (consult factory) TRIAC/MLV, DMX, DALI, Casambi, PoE

Important Notes

Specification

1. Different finish options are only applicable to trim ring and not for LED module housing. Refer to Appendix or MP Lighting website for complete look of luminaire with different trim finish options.

Warranty Notes & Disclaimer

Malfunction and damage to product due to incompatible dimming system or misuse will not be covered under warranty. Consult MP Lighting for recommended drivers. If the fixture has an option to be installed with a dimming control system, consult a dimming system manufacturer with minimum load before installing. MP Lighting reserves the right, at its sole discretion, at any time and without notice, to make design changes to any of our products. Consult MP Lighting website for most updated documentation.

L373

INTERIOR

In-grade | For floor, ceilings, walls, and stairs

- Dry location



Performance

Wattage	Forward Current	Power Consumption Budget per fixture (including driver)	LED output (Source)	Fixture Output (Delivered)
1W	350mA	1.3W	110 lm	20.5-46.2 lm
2W	700mA	2.6W	220 lm	36.3-80.9 lm

Application

Environment	Dry Location approved. IP 40.
Drive Over Rating	9,700 lbs (4,400 kg)
Mounting	Comes with steel flange (FLG-L371-ZP) that mounts to pre-installed standard 4" (102mm) octagonal back box (not included), 1-1/2"(38mm) deep minimum, and 1/4"(6mm) setback from face of finished surface material.

Electrical

Power Supplies	Remote LED drivers (120-277V AC input, constant current output): Fixtures to be wired in series.
Control	On/off control Dimming: ELV or 0-10V dimming with appropriate drivers Other options (consult factory): TRIAC/MLV, DMX, DALI, Casambi, Power over Ethernet

Luminaire Construction

LED Light Source	W22S = CCT: 2200K, CRI (Ra): 80+, Colour Consistency: 3SDCM W27H = CCT: 2700K, CRI (Ra): 90+, Colour Consistency: 2SDCM W30H = CCT: 3000K, CRI (Ra): 90+, Colour Consistency: 2SDCM W35H = CCT: 3500K, CRI (Ra): 90+, Colour Consistency: 2SDCM W41H = CCT: 4100K, CRI (Ra): 90+, Colour Consistency: 3SDCM
Weight	1.8 lbs (0.816 kg). Typical Aluminum Insert & Back Box only.
Weight	N/A
Material	Fixture: machined solid anodized aluminum or machined stainless steel (316) with tempered glass
Supplied with	Standard installation housing: Comes with a steel mounting flange.
Warranty & LED Life	5 years limited warranty Estimated useful life of LED is 50,000 hours.

Ordered Separately

System Components	Power supplies: remote driver Please consult factory or visit Recommended Drivers for available driver options.
-------------------	---

Mounting Options & Dimensions

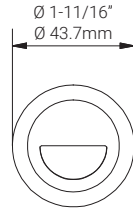
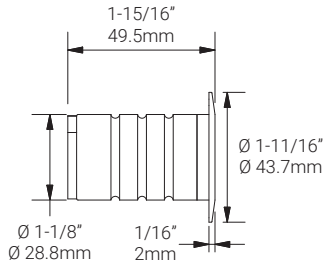
LED Insert Dimensions

Fixture

Top View

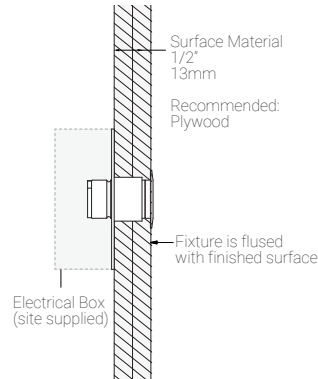
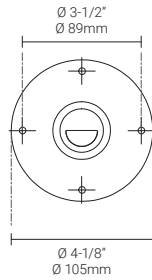
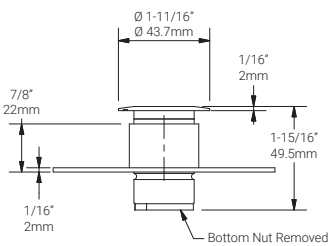
3D View

Beam



Wall Installation (shown with **FLG-L371-ZP** mounting flange)

Fixture with a mounting flange



Appendix

Aluminum Finishes



MA matte clear anodized



BA black anodized



BZ bronze powder coated

Stainless Steel Finishes

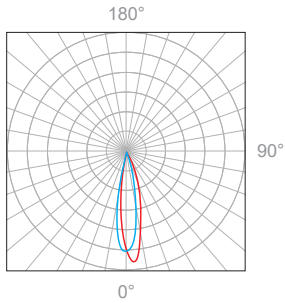


S6 polished stainless steel 316

1W, 3000K, 90+ CRI

Polar Candela Distribution

Beam Width: 12°



Illuminance at a Distance

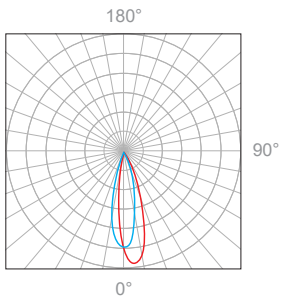
Distance		Center Beam fc	Beam Width			
1.5ft	0.46m	74.3fc	0.7ft	0.21m	0.6ft	0.18m
3.0ft	0.91m	18.6fc	1.3ft	0.39m	1.3ft	0.39m
4.5ft	1.37m	8.26fc	2.0ft	0.61m	1.9ft	0.58m
6.0ft	1.83m	4.64fc	2.6ft	0.79m	2.5ft	0.76m
7.5ft	2.29m	2.97fc	3.3ft	1.00m	3.2ft	0.97m
9.0ft	2.74m	2.06fc	3.9ft	1.18m	3.8ft	1.15m

Delivered Lumen: 46.2 lm
 ■ Vertical Beam Spread: 24.6°
 ■ Horizontal Beam Spread: 23.7°

Tested on 10/07/2024

Polar Candela Distribution

Beam Width: 30°



Illuminance at a Distance

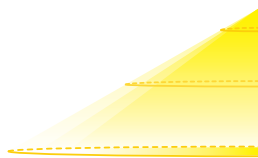
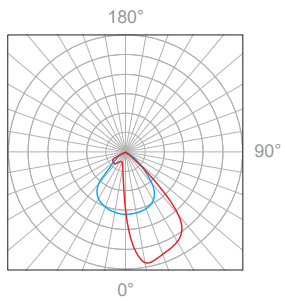
Distance		Center Beam fc	Beam Width			
1.5ft	0.46m	53.6fc	0.8ft	0.24m	0.9ft	0.27m
3.0ft	0.91m	13.4fc	1.6ft	0.49m	1.8ft	0.54m
4.5ft	1.37m	5.96fc	2.4ft	0.73m	2.7ft	0.82m
6.0ft	1.83m	3.35fc	3.2ft	0.98m	3.7ft	1.12m
7.5ft	2.29m	2.14fc	4.0ft	1.22m	4.6ft	1.40m
9.0ft	2.74m	1.49fc	4.8ft	1.46m	5.5ft	1.67m

Delivered Lumen: 44.5 lm
 ■ Vertical Beam Spread: 29.8°
 ■ Horizontal Beam Spread: 33.9°

Tested on 10/07/2024

Polar Candela Distribution

Beam Width: 120°



Illuminance at a Distance

Distance		Center Beam fc	Beam Width			
1.5ft	0.46m	6.43fc	1.0ft	0.30m	2.2ft	0.67m
3.0ft	0.91m	1.61fc	1.9ft	0.58m	4.4ft	1.34m
4.5ft	1.37m	0.71fc	2.9ft	0.88m	6.6ft	2.01m
6.0ft	1.83m	0.40fc	3.9ft	1.18m	8.7ft	2.65m
7.5ft	2.29m	0.26fc	4.9ft	1.49m	10.9ft	3.32m
9.0ft	2.74m	0.18fc	5.8ft	1.76m	13.1ft	3.99m

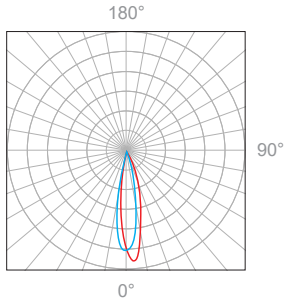
Delivered Lumen: 20.5 lm
 ■ Vertical Beam Spread: 35.9°
 ■ Horizontal Beam Spread: 72.1°

Tested on 10/07/2024

2W, 3000K, 90+ CRI

Polar Candela Distribution

Beam Width: 12°



Illuminance at a Distance

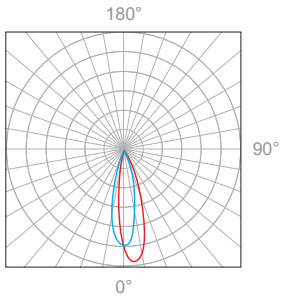
Distance		Center Beam fc	Beam Width			
1.5ft	0.46m	140fc	0.6ft	0.18m	0.6ft	0.18m
3.0ft	0.91m	35.0fc	1.2ft	0.36m	1.3ft	0.39m
4.5ft	1.37m	15.6fc	1.8ft	0.55m	1.9ft	0.58m
6.0ft	1.83m	8.75fc	2.5ft	0.76m	2.5ft	0.76m
7.5ft	2.29m	5.60fc	3.1ft	0.94m	3.2ft	0.97m
9.0ft	2.74m	3.89fc	3.7ft	1.12m	3.8ft	1.15m

Delivered Lumen: 80.9 lm
 ■ Vertical Beam Spread: 23.2°
 ■ Horizontal Beam Spread: 23.8°

Tested on 10/07/2024

Polar Candela Distribution

Beam Width: 30°



Illuminance at a Distance

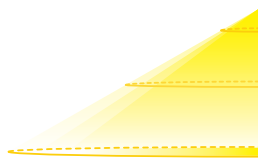
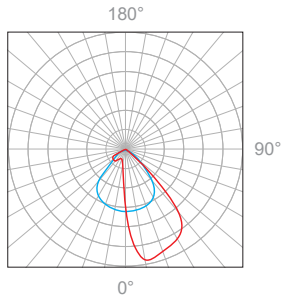
Distance		Center Beam fc	Beam Width			
1.5ft	0.46m	91.5fc	0.8ft	0.24m	0.9ft	0.27m
3.0ft	0.91m	22.9fc	1.6ft	0.48m	1.8ft	0.54m
4.5ft	1.37m	10.2fc	2.5ft	0.76m	2.7ft	0.82m
6.0ft	1.83m	5.72fc	3.3ft	1.00m	3.6ft	1.09m
7.5ft	2.29m	3.66fc	4.1ft	1.25m	4.5ft	1.37m
9.0ft	2.74m	2.54fc	4.9ft	1.49m	5.4ft	1.64m

Delivered Lumen: 76.1 lm
 ■ Vertical Beam Spread: 30.5°
 ■ Horizontal Beam Spread: 33.6°

Tested on 10/07/2024

Polar Candela Distribution

Beam Width: 120°



Illuminance at a Distance

Distance		Center Beam fc	Beam Width			
1.5ft	0.46m	10.7fc	1.0ft	0.30m	2.1ft	0.64m
3.0ft	0.91m	2.68fc	2.0ft	0.61m	4.3ft	1.31m
4.5ft	1.37m	1.19fc	3.0ft	0.91m	6.4ft	1.95m
6.0ft	1.83m	0.67fc	3.9ft	1.18m	8.6ft	2.62m
7.5ft	2.29m	0.43fc	4.9ft	1.49m	10.7ft	3.26m
9.0ft	2.74m	0.30fc	5.9ft	1.79m	12.9ft	3.93m

Delivered Lumen: 36.3 lm
 ■ Vertical Beam Spread : 36.4°
 ■ Horizontal Beam Spread : 71.1°

Tested on 10/07/2024