

# L424

## INTERIOR

Recessed Downlight | For ceilings, soffits

○ Damp and Dry location



Shown with Spring Clip



### Ordering Information

Clear Form

Date : \_\_\_\_\_

Quantity : \_\_\_\_\_

Project : \_\_\_\_\_

Note : \_\_\_\_\_

Type : \_\_\_\_\_

### Specifications

Luminaire | Example Code: L424-NI-M-13-W30H-45-ELB-WH

Product	Mounting	Dimming <sup>1</sup>	Wattage	CCT & CRI	Beam Angle	Accessories <sup>2</sup> (optional)	Trim Finish
<b>L424</b>			<b>13</b>				
	NI non-insulated R retrofit driver	M MLV dimming (120V) D 0-10V dimming (120-277V)	13 13W	<b>High (90+) CRI:</b> W27H 2700K 90+ CRI W30H 3000K 90+ CRI W35H 3500K 90+ CRI  <b>Very High (97+) CRI:</b> W27V 2700K 97+ CRI W30V 3000K 97+ CRI  WD warm dimming (1800-3000K, 95+ CRI) <sup>1</sup>	15 15° 20 20° 26 26° 45 45°	ELB eggcrate louver, black	BA black anodized WH white powder coated

### System Components (Ordered Separately)

Remote Driver : \_\_\_\_\_

\* Consult MP Lighting Website or Factory.

### Important Notes

#### Specification

1. Refer to pg.4 or [Warm Dimming](#) for details.
2. Refer to Appendix for louver's image.

#### Warranty Notes & Disclaimer

Malfunction and damage to product due to incompatible dimming system or misuse will not be covered under warranty. Consult MP Lighting for recommended drivers. If the fixture has an option to be installed with a dimming control system, consult a dimming system manufacturer with minimum load before installing. MP Lighting reserves the right, at its sole discretion, at any time and without notice, to make design changes to any of our products. Consult MP Lighting website for most updated documentation.

# L424

## INTERIOR

Recessed Downlight | For ceilings, soffits

○ Damp and Dry location



### Performance

Wattage	Forward Current	Power Consumption Budget per fixture (including driver)	LED output (Source)	Fixture Output (Delivered)
13W	350mA	13W	1430 lm	892-1200 lm

### Application

Environment	Damp and Dry Location approved. IP 54.
Mounting	Mounts with spring clips. <b>Cut-out size:</b> Ø 2-3/4" (69.85mm) <b>Cord Length:</b> 22-1/4" (565mm)

### Electrical

Power Supplies	<b>Comes with:</b> Remote LED drivers (120V AC input, MLV dimmable) <b>OR</b> Remote LED drivers (120-277V AC input, 0-10V dimmable)
Control	<b>On/off control</b> <b>Dimming:</b> MLV/ 0-10V dimming with appropriate drivers <b>Other options (consult factory):</b> TRIAC/MLV, DMX, DALI, Casambi, Power over Ethernet

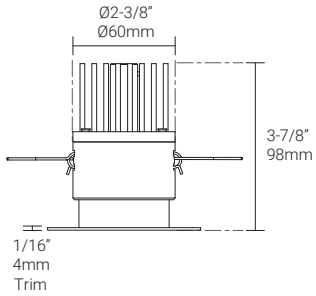
### Luminaire Construction

LED Light Source	<b>W27H</b> = CCT: 2700K, CRI (Ra): 90+, Colour Consistency: 2SDCM <b>W30H</b> = CCT: 3000K, CRI (Ra): 90+, Colour Consistency: 2SDCM <b>W35H</b> = CCT: 3500K, CRI (Ra): 90+, Colour Consistency: 2SDCM <b>W27V</b> = CCT: 2700K, CRI (Ra): 97+, Colour Consistency: 2SDCM <b>W30V</b> = CCT: 3000K, CRI (Ra): 97+, Colour Consistency: 2SDCM <b>WD</b> = CCT: 1800K-3000K, CRI (Ra): 95+
Weight	With NI housing: 4.5lbs (2.04kg). With R housing: 1.8lbs (0.81kg)
Material	<b>Fixture:</b> machined marine-grade aluminum
Supplied with	<b>Non-insulated housing:</b> Comes with frame, built-in nailer, housing cover, and cord <b>Retrofit driver:</b> remote driver housing and cord
Warranty & LED Life	5 years limited warranty Estimated useful life of LED is 50,000 hours.

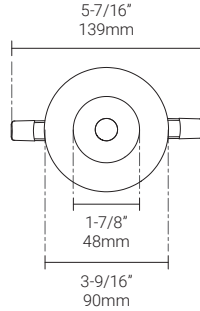
Mounting Options & Dimensions

LED Fixture Dimensions

Fixture



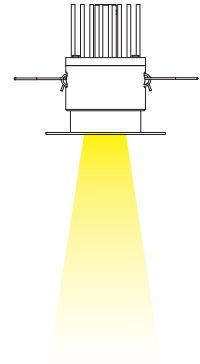
Top View



3D View

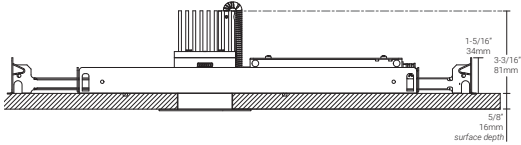


Beam

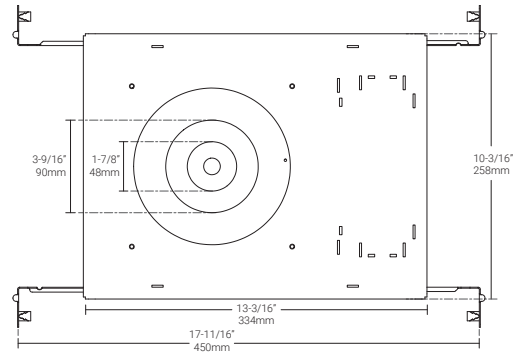


Non-insulated housing with driver

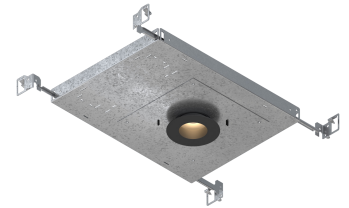
Side View



Bottom View

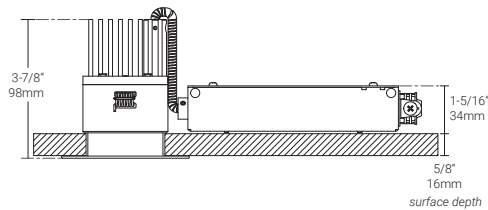


3D View

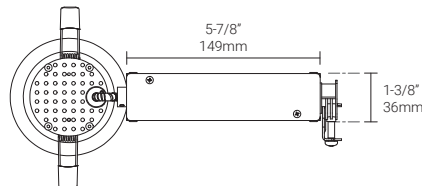


Retrofit housing with driver

Side View



Top View

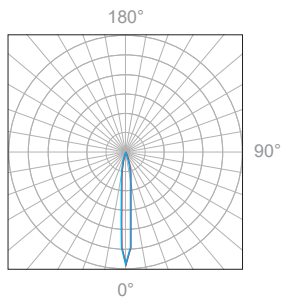


3D View



13W, 3000K, 90+ CRI

**Polar Candela Distribution**



**Beam Width: 15°**

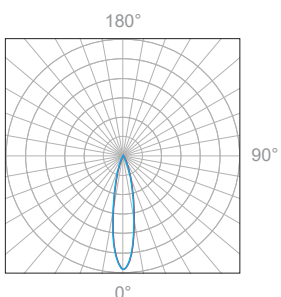


**Illuminance at a Distance**

Distance		Center Beam fc	Beam Width			
3.0ft	0.91m	835fc	0.9ft	0.27m	0.9ft	0.27m
6.0ft	1.83m	209fc	1.8ft	0.54m	1.8ft	0.54m
9.0ft	2.74m	92.8fc	2.7ft	0.82m	2.7ft	0.82m
12.0ft	3.65m	52.2fc	3.6ft	1.09m	3.6ft	1.09m
15.0ft	4.57m	33.4fc	4.5ft	1.37m	4.4ft	1.34m
18.0ft	5.48m	23.2fc	5.4ft	1.64m	5.3ft	1.61m

Delivered Lumen: 892.2 lm  
 ■ Vertical Beam Spread: 17.1°  
 ■ Horizontal Beam Spread: 16.8°

**Polar Candela Distribution**



**Beam Width: 20°**

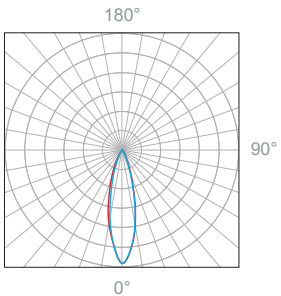


**Illuminance at a Distance**

Distance		Center Beam fc	Beam Width			
3.0ft	0.91m	873fc	1.0ft	0.30m	1.0ft	0.30m
6.0ft	1.83m	218fc	2.0ft	0.61m	2.1ft	0.64m
9.0ft	2.74m	97.0fc	3.0ft	0.91m	3.1ft	0.94m
12.0ft	3.65m	54.6fc	4.0ft	1.22m	4.2ft	1.28m
15.0ft	4.57m	34.9fc	5.0ft	1.52m	5.2ft	1.58m
18.0ft	5.48m	24.2fc	6.0ft	1.82m	6.3ft	1.92m

Delivered Lumen: 1200.8 lm  
 ■ Vertical Beam Spread: 18.9°  
 ■ Horizontal Beam Spread: 19.9°

**Polar Candela Distribution**



**Beam Width: 26°**

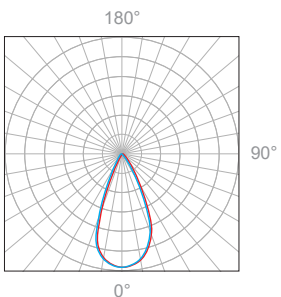


**Illuminance at a Distance**

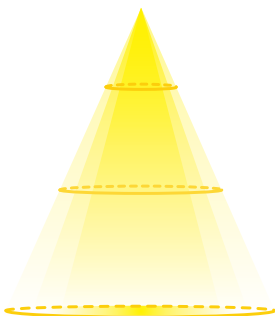
Distance		Center Beam fc	Beam Width			
3.0ft	0.91m	492fc	1.4ft	0.42m	1.4ft	0.42m
6.0ft	1.83m	123fc	2.7ft	0.82m	2.7ft	0.82m
9.0ft	2.74m	54.7fc	4.1ft	1.25m	4.1ft	1.25m
12.0ft	3.65m	123fc	5.5ft	1.67m	5.5ft	1.67m
15.0ft	4.57m	78.7fc	6.9ft	2.10m	6.8ft	2.07m
18.0ft	5.48m	54.7fc	8.2ft	2.50m	8.2ft	2.50m

Delivered Lumen: 1155 lm  
 ■ Vertical Beam Spread: 25.8°  
 ■ Horizontal Beam Spread: 25.7°

**Polar Candela Distribution**



**Beam Width: 45°**

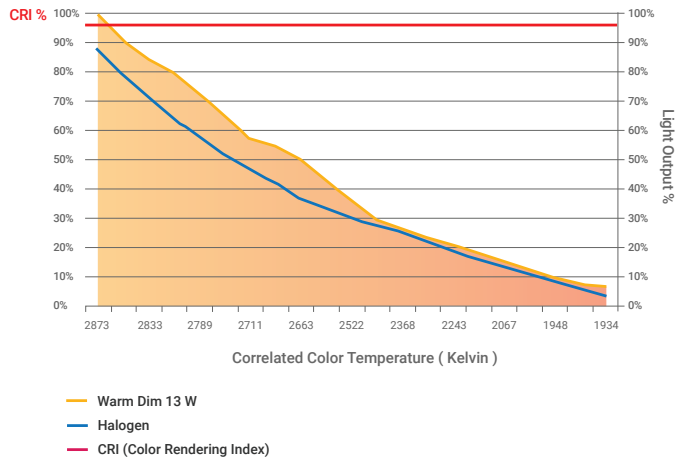


**Illuminance at a Distance**

Distance		Center Beam fc	Beam Width			
3.0ft	0.91m	191fc	2.5ft	0.76m	2.5ft	0.76m
6.0ft	1.83m	47.8fc	5.0ft	1.52m	5.0ft	1.52m
9.0ft	2.74m	21.2fc	7.5ft	2.28m	7.5ft	2.28m
12.0ft	3.65m	11.9fc	10.0ft	3.04m	9.9ft	3.01m
15.0ft	4.57m	7.65fc	12.5ft	3.81m	12.4ft	3.78m
18.0ft	5.48m	5.31fc	15.0ft	4.57m	14.9ft	4.54m

Delivered Lumen: 1109.6 lm  
 ■ Vertical Beam Spread: 45.2°  
 ■ Horizontal Beam Spread: 45.0°

## Warm Dimming VS. Halogen



## Appendix

### Trim Finishes

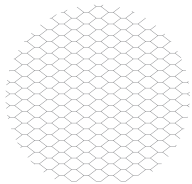


WH white powder coated



BA black anodized

### Accessories



ACCS-ELB eggcrate louver, black