

# L651

## INTERIOR

Pendant | For ceilings

● Dry location



Shown with Cord

### Ordering Information

Clear Form

Date : \_\_\_\_\_

Quantity : \_\_\_\_\_

Project : \_\_\_\_\_

Note : \_\_\_\_\_

Type : \_\_\_\_\_

### Specifications

Luminaire | Example Code: L651-C13-8-W30H-N-D-C72-WO-I

Product	Canopy <sup>1</sup>	Version	CCT & CRI <sup>2</sup>	Beam Angle	Input Voltage	Cord/Stem Length <sup>3</sup>	Material (Wood) <sup>4</sup>	Finish (optional coating) <sup>5</sup>
<b>L651</b>		<b>8</b>		<b>N</b>	<b>D</b>		<b>WO</b>	
	<b>C13</b> <b>C14</b>	<b>8</b> 8W	<b>W27H</b> 2700K 90+ <b>W30H</b> 3000K 90+	<b>N</b> narrow flood 30°	<b>D</b> 12V DC	<b>Cord:</b> <b>C72</b> 72" (1830mm) <b>CX</b> custom length  <b>Stem:</b> <b>S6</b> 6" (152mm) <b>SX</b> custom length	<b>WO</b> white oak	<b>I</b> Intumescent fire retardant coating

### System Components (Ordered Separately)

Remote Driver : \_\_\_\_\_

\* Consult MP Lighting Website or Factory.

### Important Notes

#### Specification

1. See pg.3-5 - for different canopy options and its dimensions.
2. See pg.2 - for light quality and colour consistency details.
3. 72" (1830mm) cord or 6" (152mm) stem is included. Consult factory for custom cord/stem length.
4. Consult factory for TK (teak) option.
5. Optional intumescent fire retardant coating can be applied to pendant against high humidity and other potentially harsh environmental conditions.

#### Warranty Notes & Disclaimer

Malfunction and damage to product due to incompatible dimming system or misuse will not be covered under warranty. Consult MP Lighting for recommended drivers. If the fixture has an option to be installed with a dimming control system, consult a dimming system manufacturer with minimum load before installing. MP Lighting reserves the right, at its sole discretion, at any time and without notice, to make design changes to any of our products. Consult MP Lighting website for most updated documentation.

# L651

## INTERIOR

Pendant | For ceilings

● Dry location



Shown with Cord

### Performance

Wattage	Forward Current	Power Consumption Budget per fixture (including driver)	LED output (Source)	Fixture Output (Delivered)
8W	700mA	8W	880 lm	254 lm

### Application

Environment	Dry Location approved. IP 20.
Mounting	<b>C13/C14:</b> Mounts to a 4" octagonal box using the mounting canopy.

### Electrical

Power Supplies	Remote LED drivers (120-277V AC input, <b>constant current output</b> ): Fixtures to be wired in series. Remote LED drivers (100-277V AC input, <b>constant voltage output</b> ): Fixtures to be wired in parallel.
Control	<b>On/off control</b> <b>Dimming:</b> ELV or 0-10V dimming with appropriate drivers <b>Other options (consult factory):</b> TRIAC/MLV, DMX, DALI, Casambi, Power over Ethernet

### Luminaire Construction

LED Light Source	<b>W27H</b> = CCT: 2700K, CRI (Ra): 90+, Colour Consistency: 3SDCM <b>W30H</b> = CCT: 3000K, CRI (Ra): 90+, Colour Consistency: 3SDCM
Standard Compliance	✓ WELL standard – Feature 58: Color Quality
Weight	N/A
Material	<b>Fixture:</b> machined marine-grade aluminum
Supplied with	<b>Standard installation housing:</b> Comes with a canopy, a universal crossbar, two screws (depending on selected canopy option), and an allen key. <b>Cord/stem:</b> 6' (1830mm) cord or 6" (152mm) stem is included. Consult factory for custom cord/stem length.
Warranty & LED Life	5 years limited warranty Estimated useful life of LED is 50,000 hours.

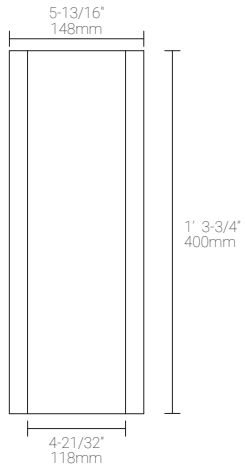
### Ordered Separately

System Components	<b>Power supplies:</b> remote driver Please consult factory or visit <a href="#">Recommended Drivers</a> for available driver options.
-------------------	---

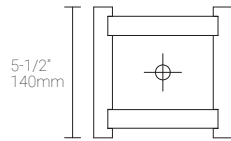
Mounting Options & Dimensions

LED Fixture Dimensions

Fixture (Pendant only)



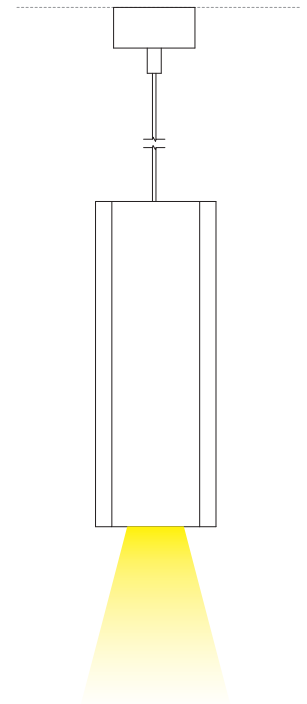
Top View



3D View



Beam (shown with C14)

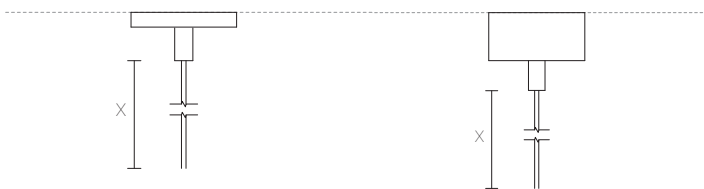


Canopy Images, Dimensions & Measurement of Custom Cord/Stem Length (X)

C13

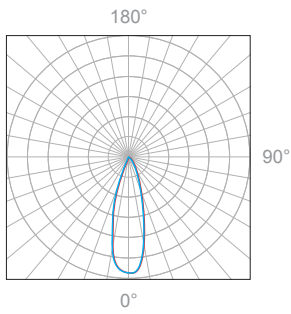


C14

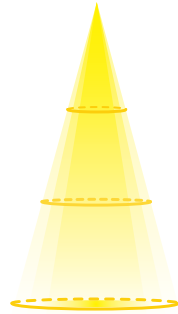


8W, 3000K, 90+ CRI

Polar Candela Distribution



Beam Width: 30°



Illuminance at a Distance

Distance	Center Beam fc		Beam Width			
	ft	m	ft	m	ft	m
3.0ft	0.91m	202.7fc	1.4ft	0.43m	1.4ft	0.43m
6.0ft	1.83m	50.1fc	2.9ft	0.88m	2.9ft	0.88m
9.0ft	2.74m	21.3fc	4.3ft	1.31m	4.3ft	1.31m
12.0ft	3.66m	11.7fc	5.7ft	1.74m	5.7ft	1.74m
15.0ft	4.57m	8.2fc	7.2ft	2.19m	7.2ft	2.19m
18.0ft	5.49m	6.3fc	8.6ft	2.62m	8.6ft	2.62m

Delivered Lumen: 418 lm  
 ■ Vertical Beam Spread: 26.9°  
 ■ Horizontal Beam Spread: 26.9°

Full Spectrum

— Full Spectrum — Standard Illuminant @ 3000K — Ra≥80

