

L73SF

INTERIOR

Spotlight | For directional light for wall, picture or signage illumination.

- Dry location



Ordering Information

Clear Form

Date : _____

Quantity : _____

Project : _____

Note : _____

Type : _____

Specifications

Luminaire | Example Code: L73-SF-6-W27H-S-X-MC

Product	Mounting	Version	CCT & CRI ¹	Beam Angle	Stem Length ²	Finish
L73	SF	6				MC
	SF single rail flush wall mount	6 6W	Standard (80+)CRI: W22S 2200K 80+ High (90+) CRI: W27H 2700K 90+ W30H 3000K 90+ W35H 3500K 90+ W41H 4100K 90+	S spot 12° N narrow flood 30° F flood 60°	1 1" (25mm) X custom length	Aluminum Finishes: MC matte chrome

System Components (Ordered Separately)

Remote Driver : _____

* Consult MP Lighting Website or Factory.

Important Notes

Specification

1. Refer to pg.2 - for Light Quality & Colour Consistency details.
2. Maximum: 2" (51mm), 1" (25mm) increment

Warranty Notes & Disclaimer

Malfunction and damage to product due to incompatible dimming system or misuse will not be covered under warranty. Consult MP Lighting for recommended drivers. If the fixture has an option to be installed with a dimming control system, consult a dimming system manufacturer with minimum load before installing. MP Lighting reserves the right, at its sole discretion, at any time and without notice, to make design changes to any of our products. Consult MP Lighting website for most updated documentation.

L73SF

INTERIOR

Spotlight | For directional light for wall, picture or signage illumination.

- Dry location



Performance

Wattage	Forward Current	Power Consumption Budget per fixture (including driver)	LED output (Source)	Fixture Output (Delivered)
6W	350mA	8W	660 lm	235-320 lm

Application

Environment	Dry Location approved. IP 20.
Mounting	SF: Rotatable and easy to position. Designed for use on MP single rail flush wall (SF) system (sold separately).

Electrical

Electrical	Remote LED drivers (100-240V AC input, constant voltage output)
Control	On/off control Dimming: ELV or 0-10V dimming with appropriate drivers Other options (consult factory): TRIAC/MLV, DMX, DALI, Casambi, Power over Ethernet

Luminaire Construction

LED Light Source	W22S = CCT: 2200K, CRI (Ra): 80+, Colour Consistency: 3SDCM W27H = CCT: 2700K, CRI (Ra): 90+, Colour Consistency: 2SDCM W30H = CCT: 3000K, CRI (Ra): 90+, Colour Consistency: 2SDCM W35H = CCT: 3500K, CRI (Ra): 90+, Colour Consistency: 2SDCM W41H = CCT: 4100K, CRI (Ra): 90+, Colour Consistency: 3SDCM
Standard Compliance	✓RoHS-compliant ✓WELL standard – Feature 58: Color Quality.
Weight	0.77lbs (0.35kg).
Material	Fixture: Solid brass & aluminum.
Supplied with	Standard installation: Comes with SF connector.
Warranty & LED Life	5 years limited warranty. Estimated useful life of LED is 50,000 hours.

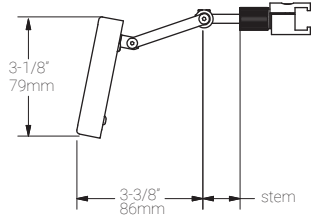
Ordered Separately

System Components	Power supplies: remote driver Please consult factory or visit Recommended Drivers for available driver options.
-------------------	---

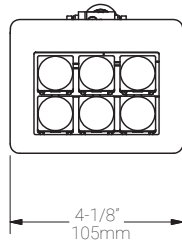
Mounting Options & Dimensions

LED Fixture Dimensions (shown with SF single rail flush wall mount)

Fixture



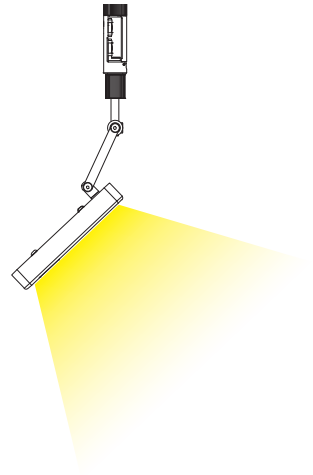
Front View



3D View

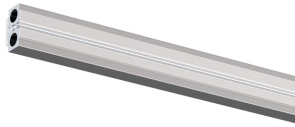


Beam



SF

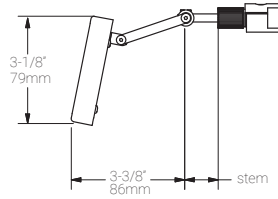
Single Rail Flush Wall Mount



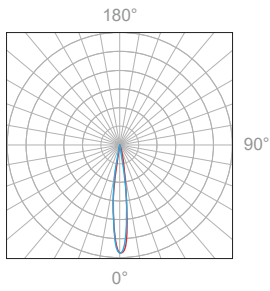
Fixture with Single Rail Flush



Dimensions



Polar Candela Distribution



Beam Width: 12°

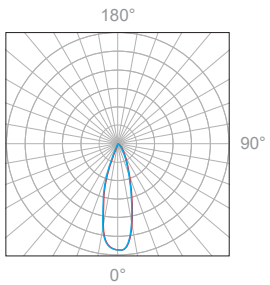


Illuminance at a Distance

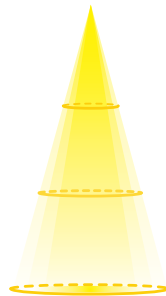
Distance		Center Beam fc	Beam Width			
3.0ft	0.91m	627.0fc	1.0ft	0.30m	1.0ft	0.30m
6.0ft	1.83m	160.0fc	2.1ft	0.64m	2.1ft	0.64m
9.0ft	2.74m	70.0fc	3.1ft	0.94m	3.1ft	0.94m
12.0ft	3.66m	39.0fc	4.1ft	1.25m	4.1ft	1.25m
15.0ft	4.57m	25.0fc	5.2ft	1.58m	5.2ft	1.58m
18.0ft	5.49m	18.0fc	6.2ft	1.89m	6.2ft	1.89m

Delivered Lumen: 235 lm
 ■ Vertical Beam Spread: 14°
 ■ Horizontal Beam Spread: 14°

Polar Candela Distribution



Beam Width: 30°

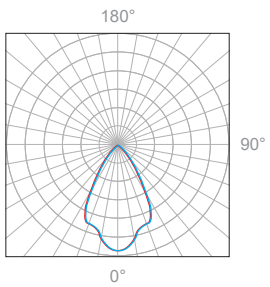


Illuminance at a Distance

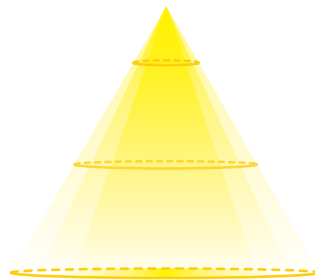
Distance		Center Beam fc	Beam Width			
3.0ft	0.91m	213.0fc	1.4ft	0.43m	1.4ft	0.43m
6.0ft	1.83m	50.0fc	2.9ft	0.88m	2.9ft	0.88m
9.0ft	2.74m	23.0fc	4.3ft	1.31m	4.3ft	1.31m
12.0ft	3.66m	13.0fc	5.7ft	1.74m	5.7ft	1.74m
15.0ft	4.57m	8.9fc	7.2ft	2.19m	7.2ft	2.19m
18.0ft	5.49m	1.9fc	8.6ft	2.62m	8.6ft	2.62m

Delivered Lumen: 251 lm
 ■ Vertical Beam Spread: 40°
 ■ Horizontal Beam Spread: 40°

Polar Candela Distribution



Beam Width: 60°



Illuminance at a Distance

Distance		Center Beam fc	Beam Width			
3.0ft	0.91m	60.0fc	1.4ft	0.43m	1.4ft	0.43m
6.0ft	1.83m	15.0fc	2.9ft	0.88m	2.9ft	0.88m
9.0ft	2.74m	6.8fc	4.3ft	1.31m	4.3ft	1.31m
12.0ft	3.66m	3.9fc	5.7ft	1.74m	5.7ft	1.74m
15.0ft	4.57m	2.6fc	7.2ft	2.19m	7.2ft	2.19m
18.0ft	5.49m	1.9fc	8.6ft	2.62m	8.6ft	2.62m

Delivered Lumen: 320 lm
 ■ Vertical Beam Spread: 68.6°
 ■ Horizontal Beam Spread: 69.2°