

L753

INTERIOR

Wall-mount | For walls and stairs

- Dry location



Ordering Information

Clear Form

Date : _____

Quantity : _____

Project : _____

Note : _____

Type : _____

Specifications

Luminaire | Example Code: L753-2-W30H-MA

Product	Version	CCT & CRI	Trim Finish ¹
L753	1	1W	Aluminum Finishes: MA matte clear anodized BA black anodized Stainless Steel Finishes: S6 stainless steel 316
	2	2W	
		W22S 2200K 80+	
		W27H 2700K 90+	
		W30H 3000K 90+	
		W35H 3500K 90+	
	W41H 4100K 90+		

System Components (Ordered Separately)

Remote Driver : _____

* Consult MP Lighting Website or Factory.

Important Notes

Specification

1. Different finish options are only applicable to trim ring and not for LED module housing. Refer to Appendix or MP Lighting website for complete look of luminaire with different trim finish options.

Warranty Notes & Disclaimer

Malfunction and damage to product due to incompatible dimming system or misuse will not be covered under warranty. Consult MP Lighting for recommended drivers. If the fixture has an option to be installed with a dimming control system, consult a dimming system manufacturer with minimum load before installing. MP Lighting reserves the right, at its sole discretion, at any time and without notice, to make design changes to any of our products. Consult MP Lighting website for most updated documentation.

L753

INTERIOR

Wall-mount | For walls and stairs

- Dry location



Performance

Wattage	Forward Current	Power Consumption Budget per fixture (including driver)	LED output (Source)	Fixture Output (Delivered)
1W	350mA	1.3W	110 lm	0.5 lm
2W	700mA	2.6W	220 lm	1.1 lm

Application

Environment	Dry Location approved. IP 40.
Mounting	Recessed: Recessed mount to wall with coil spring clips and a mounting flange (included). Comes with 2'(610mm) wire lead.

Electrical

Power Supplies	Remote LED drivers (120-277V AC input, constant current output): Fixtures to be wired in series.
Control	On/off control Dimming: ELV or 0-10V dimming with appropriate drivers Other options (consult factory): TRIAC/MLV, DMX, DALI, Casambi, Power over Ethernet

Luminaire Construction

LED Light Source	W22S = CCT: 2200K, CRI (Ra): 80+, Colour Consistency: 3SDCM W27H = CCT: 2700K, CRI (Ra): 90+, Colour Consistency: 2SDCM W30H = CCT: 3000K, CRI (Ra): 90+, Colour Consistency: 2SDCM W35H = CCT: 3500K, CRI (Ra): 90+, Colour Consistency: 2SDCM W41H = CCT: 4100K, CRI (Ra): 90+, Colour Consistency: 3SDCM
Standard Compliance	✓ADA-compliant ✓WELL standard – Feature 58: Color Quality
Weight	N/A
Material	Fixture: machined marine-grade aluminum or stainless steel (316) with tempered glass
Supplied with	Standard installation housing: Comes with a steel mounting flange. Wire lead: 2' (610mm)
Warranty & LED Life	5 years limited warranty Estimated useful life of LED is 50,000 hours.

Ordered Separately

System Components	Power supplies: remote driver. Please consult factory or visit Recommended Drivers for available driver options.
-------------------	---

Mounting Options & Dimensions

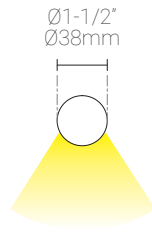
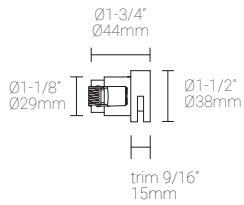
LED Insert Dimensions

Fixture

Top View

3D View

Beam

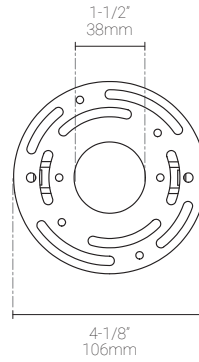
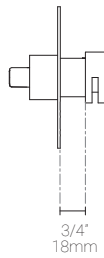
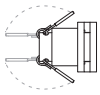


Ceiling, Wall, and Stair Riser Installation (shown with a mounting flange)

Fixture with coil spring clips

Fixture shown with a mounting flange

Fixture shown with a mounting flange



Appendix

Aluminum Finishes



MA matte clear anodized



BA black anodized

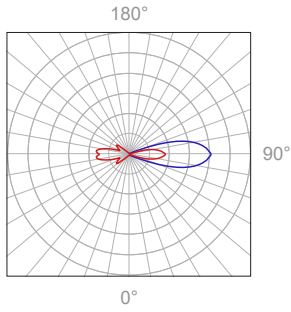
Stainless Steel Finish



S6 stainless steel 316

1W, 3000K, 90+ CRI

Polar Candela Distribution



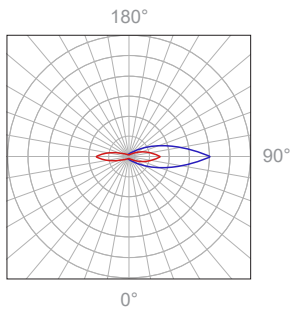
Illuminance at a Distance

Distance		Center Beam fc	Beam Width			
1.5ft	0.46m	0fc	1.8ft	0.54m	41.5ft	12.64m
3.0ft	0.91m	0fc	3.6ft	1.09m	83.0ft	25.29m
4.5ft	1.37m	0fc	5.4ft	1.64m	124.4ft	37.91m
6.0ft	1.83m	0fc	7.2ft	2.19m	165.9ft	50.56m
7.5ft	2.29m	0fc	9.0ft	2.74m	207.4ft	63.21m
9.0ft	2.74m	0fc	10.8ft	3.29m	248.9ft	75.86m

Delivered Lumen: 0.5lm
 ■ Vertical Beam Spread : 61.7°
 ■ Horizontal Beam Spread : 171.7°

2W, 3000K, 90+ CRI

Polar Candela Distribution



Illuminance at a Distance

Distance		Center Beam fc	Beam Width			
1.5ft	0.46m	0fc	0.5ft	0.54m	4.3ft	1.31m
3.0ft	0.91m	0fc	0.9ft	1.09m	8.7ft	2.65m
4.5ft	1.37m	0fc	1.4ft	1.64m	13.0ft	3.96m
6.0ft	1.83m	0fc	1.9ft	2.19m	17.4ft	5.30m
7.5ft	2.29m	0fc	2.3ft	2.74m	21.7ft	6.61m
9.0ft	2.74m	0fc	2.8ft	3.29m	26.0ft	7.92m

Delivered Lumen: 1.1lm
 ■ Vertical Beam Spread : 17.6°
 ■ Horizontal Beam Spread : 110.7°