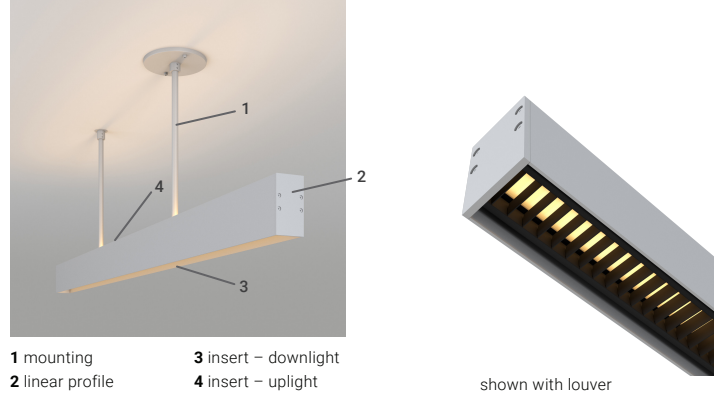


# L800 series | L804-I109

## INTERIOR

Linear | Linear beam series with different insert options

- Dry location



1 mounting  
2 linear profile  
3 insert – downlight  
4 insert – uplight

shown with louver

### Ordering Information

Clear Form

Date : \_\_\_\_\_ Quantity : \_\_\_\_\_

Project : \_\_\_\_\_ Note : \_\_\_\_\_

Type : \_\_\_\_\_

### Specifications

*Fixture comprises of 4 components that need to be specified separately: Mounting, Rail, Uplight Insert, and Downlight Insert*

**Luminaire** | Example Code: U-C12-BA // RAL-804-8-BA // I109-6-W35H-W-F // I107-7-W30H-W-F

#### COMPONENT 1 – MOUNTING (SUSPENDED)

Mounting	Stem Length or Cable Length	Finish (mounting) <sup>1,2</sup>
<b>U</b>		
U suspended	<b>S12</b> 12" (305mm) <b>SX</b> custom <sup>1,1</sup> <b>C12</b> 12" (305mm) <b>CX</b> custom <sup>1,1</sup>	<b>Aluminum Finishes:</b> <b>MA</b> matte clear anodized <b>BA</b> black anodized

#### COMPONENT 2 – RAIL

Rail	Fixture Length <sup>2,1</sup>	Finish (rail) <sup>2,3</sup>
<b>RAL-804</b>		
	<b>1</b> 1' (min.) <b>X</b> custom <sup>2,2</sup> <b>8</b> 8' (max.)	<b>Aluminum Finishes:</b> <b>MA</b> matte clear anodized <b>BA</b> black anodized

#### COMPONENT 3 – INSERT (DOWNLIGHT)

Insert	Wattage	CCT & CRI	Beam Angle <sup>3,1</sup>	Lens	Accessories (optional)
<b>I109</b>	<b>6</b>				
	6 6W/ft	<b>Standard (80+) CRI:</b> <b>W22S</b> 2200K 80+  <b>High (90+) CRI:</b> <b>W27H</b> 2700K 90+ <b>W30H</b> 3000K 90+ <b>W35H</b> 3500K 90+ <b>W41H</b> 4100K 90+	<b>N</b> narrow flood, 30° <b>F</b> flood, 54° <b>W</b> wide flood, 120°	<b>F</b> frosted <b>P</b> prismatic	<b>LLB</b> linear louver, black

#### COMPONENT 4 – INSERT (UPLIGHT)

Insert	Wattage	CCT & CRI	Beam Angle	Lens
<b>I107</b>			<b>W</b>	
	<b>7</b> 7W/ft <b>10</b> 10W/ft	<b>Standard (80+) CRI:</b> <b>W22S</b> 2200K 80+  <b>High (90+) CRI:</b> <b>W27H</b> 2700K 90+ <b>W30H</b> 3000K 90+ <b>W35H</b> 3500K 90+ <b>W41H</b> 4100K 90+	<b>W</b> wide flood, 120°	<b>F</b> frosted <b>P</b> prismatic

#### System Components (Ordered Separately)

Remote Driver : \_\_\_\_\_

\* Consult MP Lighting Website or Factory.

#### Important Notes

##### Specification

- 1.1 Maximum: 6' (1829mm), 1' (305mm) increments.
- 1.2 Refer to Appendix/MP Lighting website for complete look of luminaire with different finish options.
- 2.1 Fixture length is the length of the fixture without the end caps (3mm each cap).
- 2.2 Maximum: 8' (2438mm), 1' (305mm) increments.
- 2.3 Refer to Appendix/MP Lighting website for complete look of luminaire with different finish options.
- 3.1 Narrow flood and flood options are only available with W27H and W30H options.

##### Warranty Notes & Disclaimer

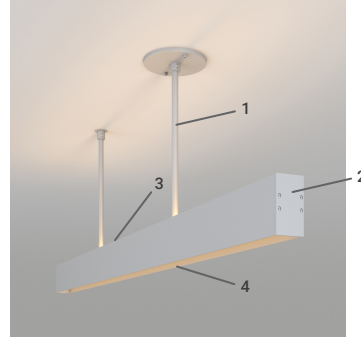
Malfunction and damage to product due to incompatible dimming system or misuse will not be covered under warranty. Consult MP Lighting for recommended drivers. If the fixture has an option to be installed with a dimming control system, consult a dimming system manufacturer with minimum load before installing. MP Lighting reserves the right, at its sole discretion, at any time and without notice, to make design changes to any of our products. Consult MP Lighting website for most updated documentation.

# L800 series | L804-I109

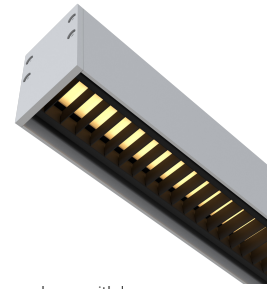
## INTERIOR

Linear | Linear beam series with different insert options

- Dry location



1 mounting  
2 linear profile  
3 insert - uplight  
4 insert - downlight



shown with louver

### Performance

Insert	Wattage	Forward Current	Power Consumption Budget per fixture (including driver)	LED output (Source)	Fixture Output (Delivered)
I109	6W/ft	250mA	7W/ft	660 lm/ft	1105-1303 lm/ft

### Application

Environment	Dry Location approved. IP 50.
Mounting	<b>Suspension-mounted:</b> Suspended from ceiling with a stand off and a canopy (both ordered separately).

### Electrical

Power Supplies	<b>Remote LED drivers:</b> (120-277V AC input, constant voltage output): Fixtures to be wired in parallel. <b>Recommended drivers (consult factory):</b> TLDAV100W24V04iB or TLDAV100W24V05iB.
Control	<b>Dimming:</b> ELV or 0-10V dimming with appropriate drivers. <b>Other options (consult factory):</b> TRIAC/MLV, DMX, DALI, Casambi, Power over Ethernet.

### Luminaire Construction

LED Light Source	<b>W22S</b> = CCT: 2200K, CRI (Ra): 80+, Colour Consistency: 3SDCM <b>W27H</b> = CCT: 2700K, CRI (Ra): 90+, Colour Consistency: 3SDCM <b>W30H</b> = CCT: 3000K, CRI (Ra): 90+, Colour Consistency: 3SDCM <b>W35H</b> = CCT: 3500K, CRI (Ra): 90+, Colour Consistency: 3SDCM <b>W41H</b> = CCT: 4100K, CRI (Ra): 90+, Colour Consistency: 3SDCM
Weight	N/A.
Material	<b>Fixture:</b> extruded marine-grade aluminum with polycarbonate lens.
Supplied with	<b>Cable:</b> 3' (914mm) factory-installed wire lead (for surface mount).
Warranty & LED Life	5 years limited warranty. Estimated useful life of LED is 50,000 hours.

### Ordered Separately

System Components	<b>Power supplies:</b> remote driver Please consult factory or visit <a href="#">Recommended Drivers</a> for available driver options.
-------------------	---

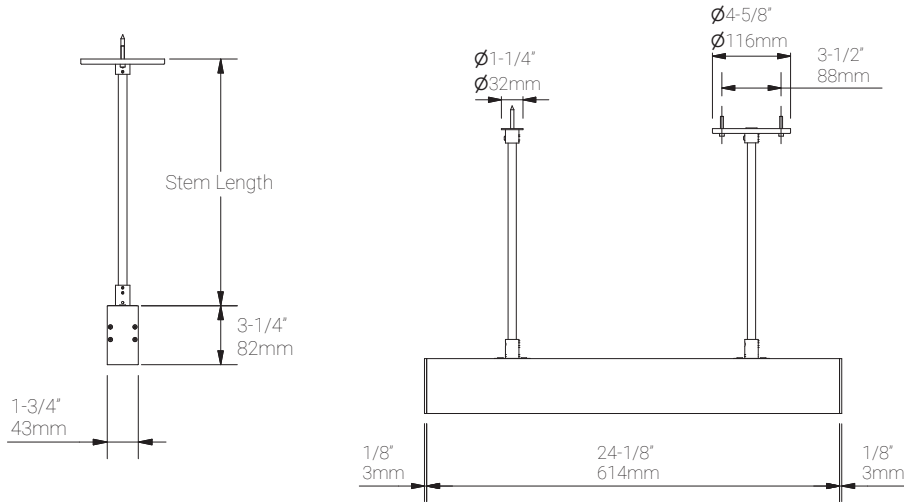
## Mounting Options & Dimensions

### LED Fixture Dimensions | Suspended-mount

Fixture

Side View

3D View



## Appendix

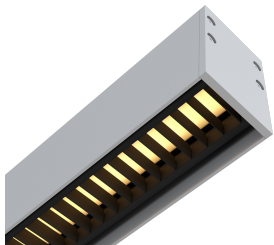
### Aluminum Finishes, Mounts, and Accessories



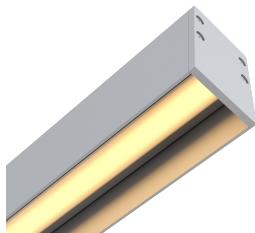
MA matte clear anodized



BA black anodized



LLB linear louver, black

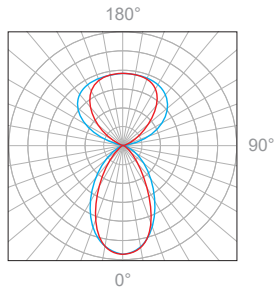


no louver

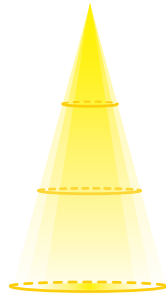
I109, 6W/ft, 4' (1219mm), 2700K, 90+ CRI | I107, 7W/ft, 4' (1219mm), 2700K, 90+ CRI

Prismatic Lens

Polar Candela Distribution



Beam Width: 30°



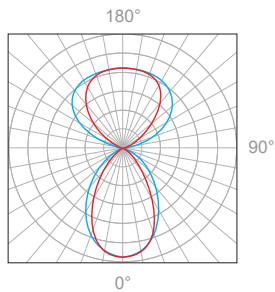
Illuminance at a Distance

Distance		Center Beam fc	Beam Width			
3.0ft	0.91m	187fc	3.3ft	1.00m	2.6ft	0.79m
6.0ft	1.83m	46.7fc	6.7ft	2.04m	5.2ft	1.58m
9.0ft	2.74m	20.8fc	10.0ft	3.04m	7.7ft	2.34m
12ft	3.65m	11.7fc	13.4ft	4.08m	10.3ft	3.14m
15ft	4.57m	7.47fc	16.7ft	5.09m	12.9ft	3.93m
18ft	5.48m	5.19fc	20.1ft	6.12m	15.5ft	4.72m

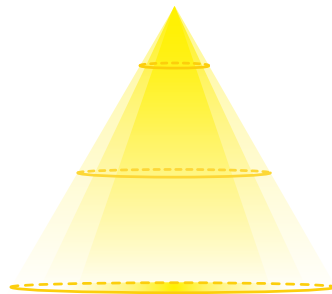
Delivered Lumen: 4421.0 lm  
 ■ Vertical Beam Spread : 58.2°  
 ■ Horizontal Beam Spread : 46.5°

Prismatic Lens

Polar Candela Distribution



Beam Width: 54°



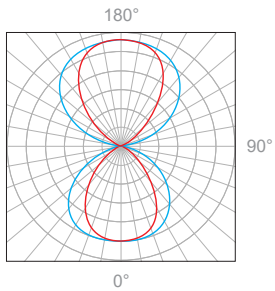
Illuminance at a Distance

Distance		Center Beam fc	Beam Width			
3.0ft	0.91m	179fc	4.6ft	1.40m	2.9ft	0.88m
6.0ft	1.83m	44.8fc	9.1ft	2.77m	5.9ft	1.79m
9.0ft	2.74m	19.9fc	13.7ft	4.17m	8.8ft	2.68m
12ft	3.65m	11.2fc	18.3ft	4.08m	11.8ft	3.14m
15ft	4.57m	7.16fc	22.8ft	5.57m	14.7ft	4.48m
18ft	5.48m	4.97fc	27.4ft	8.35m	17.7ft	5.39m

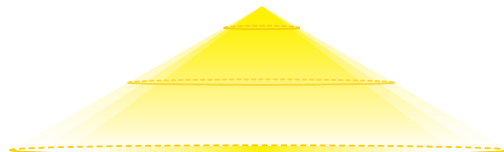
Delivered Lumen: 4865.3 lm  
 ■ Vertical Beam Spread : 74.6°  
 ■ Horizontal Beam Spread : 52.3°

Prismatic Lens

Polar Candela Distribution



Beam Width: 120°



Illuminance at a Distance

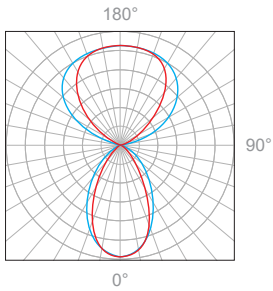
Distance		Center Beam fc	Beam Width			
3.0ft	0.91m	108fc	2.1ft	0.64m	4.8ft	1.46m
6.0ft	1.83m	27.1fc	4.2ft	1.28m	9.6ft	2.92m
9.0ft	2.74m	12.0fc	6.3ft	1.92m	14.4ft	4.39m
12ft	3.65m	6.77fc	8.4ft	2.56m	19.2ft	5.85m
15ft	4.57m	4.33fc	10.5ft	3.20m	24.0ft	7.31m
18ft	5.48m	3.01fc	12.6ft	3.84m	28.8ft	8.77m

Delivered Lumen: 5213.8 lm  
 ■ Vertical Beam Spread : 38.5°  
 ■ Horizontal Beam Spread : 77.4°

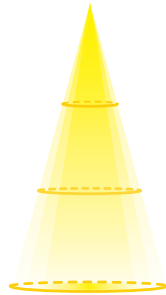
I109, 6W/ft, 4' (1219mm), 2700K, 90+ CRI | I107, 10W/ft, 4' (1219mm), 2700K, 90+ CRI

Prismatic Lens

Polar Candela Distribution



Beam Width: 30°



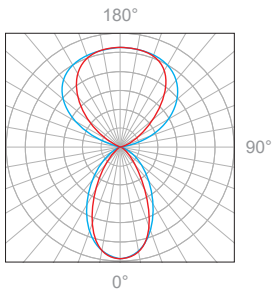
Illuminance at a Distance

Distance		Center Beam fc	Beam Width			
3.0ft	0.91m	193fc	3.4ft	1.03m	2.7ft	0.82m
6.0ft	1.83m	48.4fc	6.8ft	2.07m	5.4ft	1.64m
9.0ft	2.74m	21.5fc	10.1ft	3.07m	8.0ft	2.43m
12ft	3.65m	12.1fc	13.5ft	4.11m	10.7ft	3.26m
15ft	4.57m	7.74fc	16.9ft	5.15m	13.4ft	4.08m
18ft	5.48m	5.37fc	20.3ft	6.18m	16.1ft	4.90m

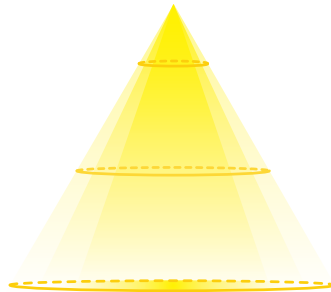
Delivered Lumen: 5589.3 lm  
 ■ Vertical Beam Spread : 58.8°  
 ■ Horizontal Beam Spread : 48.1°

Prismatic Lens

Polar Candela Distribution



Beam Width: 54°



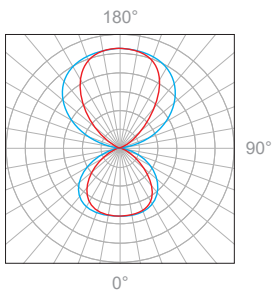
Illuminance at a Distance

Distance		Center Beam fc	Beam Width			
3.0ft	0.91m	182fc	4.6ft	1.40m	3.0ft	0.91m
6.0ft	1.83m	45.5fc	9.1ft	2.77m	5.9ft	1.79m
9.0ft	2.74m	20.2fc	13.7ft	4.17m	8.9ft	2.71m
12ft	3.65m	11.4fc	18.3ft	4.08m	11.8ft	3.14m
15ft	4.57m	7.28fc	22.8ft	5.57m	14.8ft	4.51m
18ft	5.48m	5.06fc	27.4ft	8.35m	17.7ft	5.39m

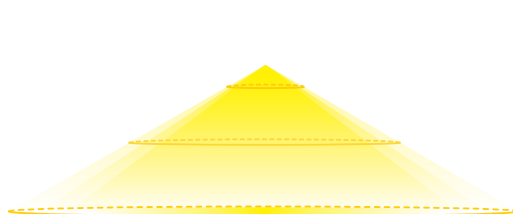
Delivered Lumen: 4865.3 lm  
 ■ Vertical Beam Spread : 74.6°  
 ■ Horizontal Beam Spread : 52.3°

Prismatic Lens

Polar Candela Distribution



Beam Width: 120°



Illuminance at a Distance

Distance		Center Beam fc	Beam Width			
3.0ft	0.91m	108fc	2.1ft	0.64m	4.8ft	1.46m
6.0ft	1.83m	27.1fc	4.2ft	1.28m	9.6ft	2.92m
9.0ft	2.74m	12.0fc	6.3ft	1.92m	14.4ft	4.39m
12ft	3.65m	6.78fc	8.4ft	2.56m	19.2ft	5.85m
15ft	4.57m	4.34fc	10.5ft	3.20m	24.0ft	7.31m
18ft	5.48m	3.01fc	12.6ft	3.84m	28.8ft	8.77m

Delivered Lumen: 6313.9 lm  
 ■ Vertical Beam Spread : 38.5°  
 ■ Horizontal Beam Spread : 77.4°