

L933

EXTERIOR

Bollard | For landscape driveways, pathways, and gardens

- Wet, Damp, and Dry location



Ordering Information

Clear Form

Date : _____

Quantity : _____

Project : _____

Note : _____

Type : _____

Specifications

Luminaire | Example Code: L933-B3-PS-1-8-W30H-N-ELB-WS-S6

Product	Canopy	Mounting	Post Length	Wattage	CCT & CRI ²	Beam Angle	Accessories (optional) ³	Shroud ⁴	Finish ⁵
L933	B3	PS	8	8					
	B3	PS pipe stake	1 1' (305mm) 2 2' (609mm) 3 3' (914mm)	8 8W	W27H 2700K 90+ W30H 3000K 90+	SS super spot 7° S spot 12° N narrow 30° F flood 48°	ELB eggcrate louver	FS full shroud WS wet location shroud	Aluminum Finishes: MA matte clear anodized BA black anodized ⁶ Stainless Steel Finishes: S6 stainless steel 316
L933	B6	PS	8	8					
	B6	MK3 mounting kit EBX-OCT1 back box NM no pipe or box	1 1' (305mm) 2 2' (609mm) 3 3' (914mm)	8 8W	W27H 2700K 90+ W30H 3000K 90+	SS super spot 7° S spot 12° N narrow 30° F flood 48°	ELB eggcrate louver	FS full shroud WS wet location shroud	Aluminum Finishes: MA matte clear anodized BA black anodized ⁶ Stainless Steel Finishes: S6 stainless steel 316

System Components (Ordered Separately)

Remote Driver : _____

* Consult MP Lighting Website or Factory.

Important Notes

Specification

- Default pipe stake length: 18" (457mm), field-cutable
- Refer to pg.2 - for Light Quality & Colour Consistency details.
- Louver accessory not available with Super Spot beam angle.
- S6 finish only available with Wet Shroud.
- Refer to Appendix or MP Lighting website for complete look of luminaire with different finish options.
- BA (black anodized) needs longer lead time.

Warranty Notes & Disclaimer

Malfunction and damage to product due to incompatible dimming system or misuse will not be covered under warranty. Consult MP Lighting for recommended drivers. If the fixture has an option to be installed with a dimming control system, consult a dimming system manufacturer with minimum load before installing. MP Lighting reserves the right, at its sole discretion, at any time and without notice, to make design changes to any of our products. Consult MP Lighting website for most updated documentation.

L933

EXTERIOR

Bollard | For landscape driveways, pathways, and gardens

- Wet, Damp, and Dry location



Performance

Wattage	Forward Current	Power Consumption Budget per fixture (including driver)	LED output (Source)	Fixture Output (Delivered)
8W	700mA	9W	880 lm	137.8-527.1 lm

Application

Environment	Wet / Damp / Dry Location approved. IP 66. Wet location shroud (WS) can be specified where proper drainage for water in shroud is required.
Mounting	B3: pushed into ground with PS (pipe stake, optional) or mounts with 1-1/2" OD standard pipe (supplied by others)

Electrical

Power Supplies	Remote LED drivers (120-277V AC input, constant current output): Fixtures to be wired in series.
Control	On/off control Dimming: ELV or 0-10V dimming with appropriate drivers Other options (consult factory): TRIAC/MLV, DMX, DALI, Casambi, Power over Ethernet

Luminaire Construction

LED Light Source	W27H = CCT: 2700K, CRI (Ra): 90+, Colour Consistency: 2SDCM W30H = CCT: 3000K, CRI (Ra): 90+, Colour Consistency: 2SDCM
Standard Compliance	✓ WELL standard – Feature 58: Color Quality
Weight	N/A
Material	Fixture: machined marine-grade aluminum or stainless steel 316
Supplied with	N/A
Warranty & LED Life	5 years limited warranty Estimated useful life of LED is 50,000 hours.

Ordered Separately

System Components	Power supplies: remote driver Please consult factory or visit Recommended Drivers for available driver options.
-------------------	---

Mounting Options & Dimensions

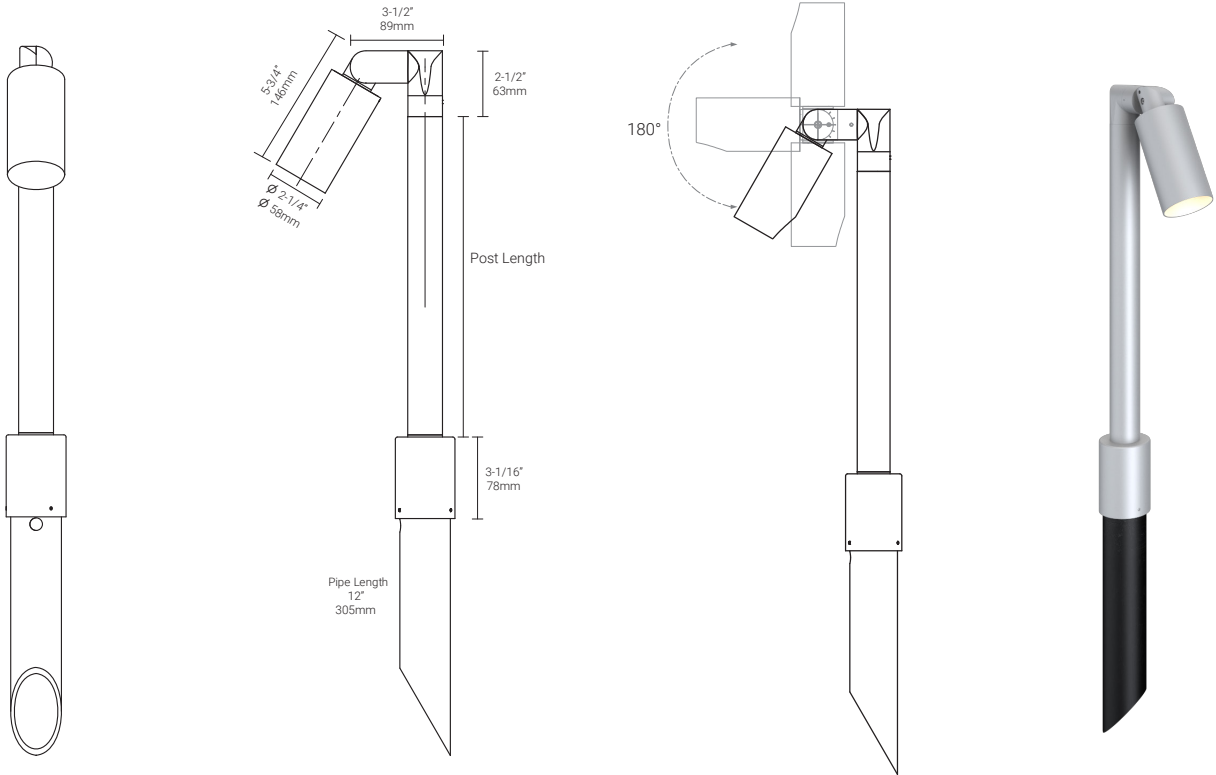
LED Fixture Dimensions

Fixture shown with B3 canopy & PS (pipe stake)

Side View

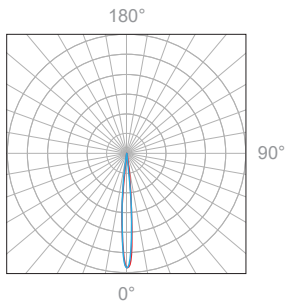
Side View

3D View



8W, 3000K, 90+ CRI

Polar Candela Distribution



Beam Width: 7°

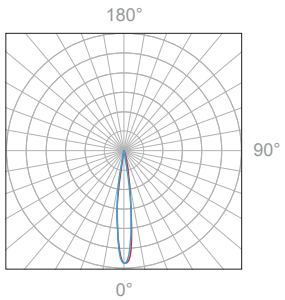


Illuminance at a Distance

Distance		Center Beam fc	Beam Width			
1.5ft	0.46m	1,155fc	0.3ft	0.09m	0.2ft	0.06m
3.0ft	0.91m	289fc	0.5ft	0.15m	0.5ft	0.15m
4.5ft	1.37m	128fc	0.8ft	0.24m	0.7ft	0.21m
6.0ft	1.83m	72.2fc	1.0ft	0.30m	1.0ft	0.30m
7.5ft	2.29m	46.2fc	1.3ft	0.39m	1.2ft	0.36m
9.0ft	2.74m	32.1fc	1.5ft	0.45m	1.5ft	0.45m

Delivered Lumen: 137.8 lm
 ■ Vertical Beam Spread: 9.6°
 ■ Horizontal Beam Spread: 9.3°

Polar Candela Distribution



Beam Width: 12°

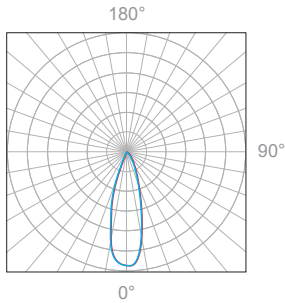


Illuminance at a Distance

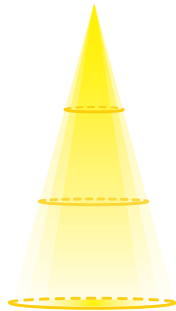
Distance		Center Beam fc	Beam Width			
1.5ft	0.46m	1,249fc	0.6ft	0.18m	0.6ft	0.18m
3.0ft	0.91m	312fc	1.2ft	0.36m	1.2ft	0.36m
4.5ft	1.37m	139fc	1.8ft	0.55m	1.8ft	0.55m
6.0ft	1.83m	78.1fc	2.4ft	0.73m	2.4ft	0.73m
7.5ft	2.29m	50.0fc	3.0ft	0.91m	3.0ft	0.91m
9.0ft	2.74m	34.7fc	3.6ft	1.09m	3.6ft	1.09m

Delivered Lumen: 527.1 lm
 ■ Vertical Beam Spread: 22.9°
 ■ Horizontal Beam Spread: 22.5°

Polar Candela Distribution



Beam Width: 30°

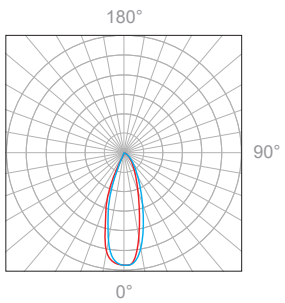


Illuminance at a Distance

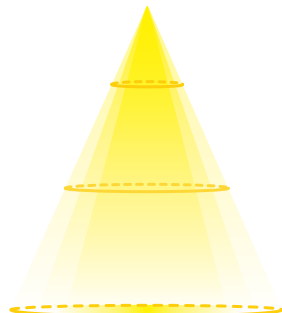
Distance		Center Beam fc	Beam Width			
1.5ft	0.46m	700fc	0.8ft	0.24m	0.8ft	0.24m
3.0ft	0.91m	175fc	1.5ft	0.45m	1.5ft	0.45m
4.5ft	1.37m	77.8fc	2.3ft	0.70m	2.3ft	0.70m
6.0ft	1.83m	43.8fc	3.1ft	0.94m	3.1ft	0.94m
7.5ft	2.29m	28.0fc	3.9ft	1.18m	3.8ft	1.15m
9.0ft	2.74m	19.5fc	4.6ft	1.40m	4.6ft	1.40m

Delivered Lumen: 452.8 lm
 ■ Vertical Beam Spread: 28.9°
 ■ Horizontal Beam Spread: 28.6°

Polar Candela Distribution



Beam Width: 48°



Illuminance at a Distance

Distance		Center Beam fc	Beam Width			
1.5ft	0.46m	504fc	1.0ft	0.30m	1.0ft	0.30m
3.0ft	0.91m	126fc	2.0ft	0.61m	2.1ft	0.64m
4.5ft	1.37m	56fc	2.9ft	0.88m	3.1ft	0.94m
6.0ft	1.83m	31.5fc	3.9ft	1.19m	4.1ft	1.25m
7.5ft	2.29m	20.2fc	4.9ft	1.49m	5.2ft	1.58m
9.0ft	2.74m	14fc	5.9ft	1.80m	6.2ft	1.89m

Delivered Lumen: 465.1 lm
 ■ Vertical Beam Spread: 36.3°
 ■ Horizontal Beam Spread: 38.1°

Appendix

Finish Options | shown with B3 canopy and PS pipe stake



MA matte clear anodized



BA black anodized

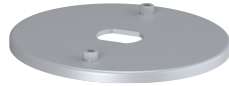


S6 stainless steel 316

Canopy Options



B3



B6

Shroud Options



FS full shroud



WS wet location shroud