

LED30W700iZ-01

CONSTANT CURRENT

30W, 700mA, 0~10V dimmable, 120-277V AC Input

○ Damp, and Dry location



Ordering Information

Clear Form

| | | | |
|-----------|-------|------------|-------|
| Date : | _____ | Quantity : | _____ |
| Project : | _____ | Note : | _____ |
| Type : | _____ | | _____ |

Specifications

LED Driver | Example Code: LED30W700iZ-01-B

| Product | Enclosure |
|----------------|--------------------|
| LED30W700iZ-01 | B |
| | B driver enclosure |

Important Notes

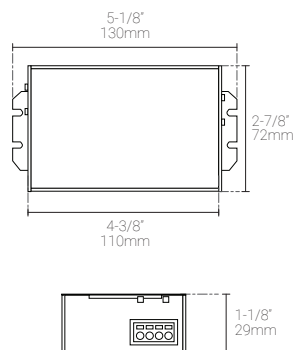
Warranty Notes & Disclaimer

MP Lighting reserves the right, at its sole discretion, at any time and without notice, to make improvements and innovations to any of our products. Consult MP Lighting website for further details.

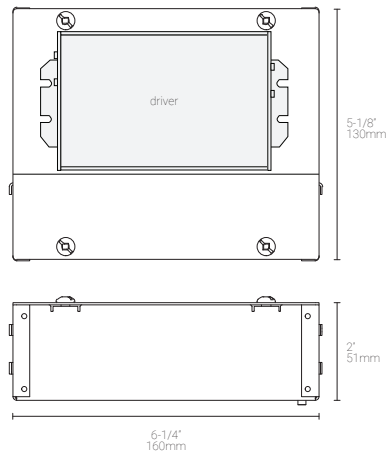
1. Do not install on-off switch at the output (load) side of a constant current LED driver as it will damage the fixture(s) and will void the warranty on both driver and fixture(s).
2. Fixtures must be wired as per MP Lighting's instruction (series wiring for constant current driver and parallel wiring for constant voltage drivers.) Failures due to improper installation will void warranty.

Dimensions

Driver



Driver with Enclosure (EBX-160-ZP)



LED30W700iZ-01

CONSTANT CURRENT

30W, 700mA, 0~10V dimmable, 120-277V AC Input

○ Damp, and Dry location



Performance

| Input | Output | Efficiency |
|---------------------------------------|--------------------------------|-----------------------------------|
| Voltage: 120~277V AC, 50/60 Hz | Voltage: 2~55V DC | Power Factor: 0.9 minimum. |
| | Current: 700mA Constant | Typical Efficiency: 85% |
| | Wattage: 30W maximum | |

Controls

| | |
|-------------------|------------------------------|
| Dimming Protocols | 0~10V dimming. |
| Dimming Range | Flicker-free dimming 1%~100% |

Recommended Load

Driver Load Typically used for 2W LED fixtures with the load below:

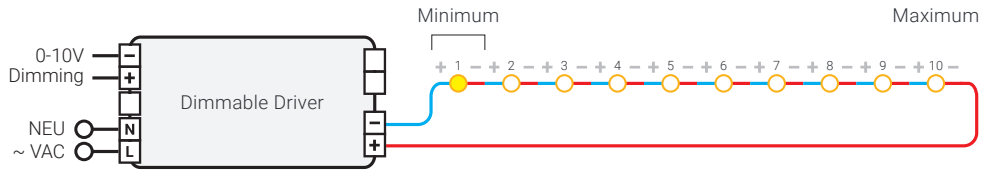
| Systems | | Load | |
|---------------|-----------------------|---------|---------|
| Input Voltage | System Dimming Option | Minimum | Maximum |
| > 120V~277V | Dimming | 1 | 10 |

Application

| | |
|---------------------|---|
| Environments | Damp / Dry Location approved. |
| Ambient Temperature | -20~50°C (-4~122°F) minimum |
| Case Temperature | 90°C (194°F) maximum |
| Driver Protection | Short Circuit, Overload & Over-voltage protection |
| Weight | 285.5g (0.63lb) |
| Case Material | Metal |

Wiring Diagram | 2W

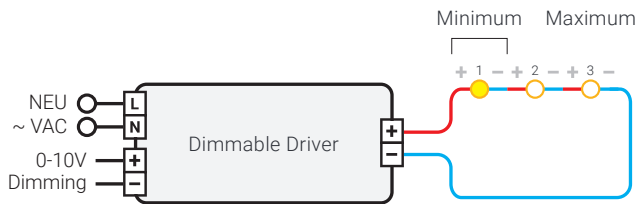
Dimming | For use with 1-10 x 2W LED lighting fixtures (700mA), wired in series



● 700mA LED Lighting Fixture

Wiring Diagram | 8W

Dimming | For use with 1-3 x 8W LED lighting fixtures (700mA), wired in series



● 700mA LED Lighting Fixture