

M960

EXTERIOR

Safety light | Egress marker for public access, bridges, tunnels, walkways & pathways.



- Wet, Damp, and Dry location



Ordering Information Clear Form

<p>Date : _____</p> <p>Project : _____</p> <p>Type : _____</p>	<p>Quantity : _____</p> <p>Note : _____</p>
--	---

Specifications

Luminaire | Example Code: M960-2-W30H-RED-SYE

Product	Version	CCT & CRI ¹	Reflective Marker Finish	Finish
M960				
	1 1W	W22S 2200K 80+	RED red	MA matte chrome anodized
	2 2W	W27H 2700K 90+	WHI white	BK black powder coated
		W30H 3000K 90+	YEL yellow	SYE safety yellow
		W35H 3500K 90+	NR no reflector	

System Components (Ordered Separately)

Pool-certified power supply : _____

* Consult MP Lighting Website or Factory.

Important Notes

Specification

- Refer to pg.2 - for Colour Consistency details.

Warranty Notes & Disclaimer

Malfunction and damage to product due to incompatible dimming system or misuse will not be covered under warranty. Consult MP Lighting for recommended drivers. If the fixture has an option to be installed with a dimming control system, consult a dimming system manufacturer with minimum load before installing. MP Lighting reserves the right, at its sole discretion, at any time and without notice, to make design changes to any of our products. Consult MP Lighting website for most updated documentation.

M960

EXTERIOR

Safety light | Egress marker for public access, bridges, tunnels, walkways & pathways.



- Wet, Damp, and Dry location



Performance

Wattage	Forward Current	Power Consumption Budget per fixture (including driver)	LED output (Source)	Fixture Output (Delivered)
1W	350mA	1.3W	110 lm	5.8 lm
2W	700mA	2.6W	220 lm	11 lm

Application

Environment	Dry / Damp / Wet Location approved. IP 68.
Mounting	Designed to be mounted onto surfaces with two screws or attached to bar grates with included hardware.
Drive Over Rating	9,700 lbs (4,400 kg).

Electrical

Electrical	12" wire lead.
Control	TBC

Luminaire Construction

LED Light Source	W22S = CCT: 2200K, CRI (Ra): 80+, Colour Consistency: 3SDCM W27H = CCT: 2700K, CRI (Ra): 90+, Colour Consistency: 2SDCM W30H = CCT: 3000K, CRI (Ra): 90+, Colour Consistency: 2SDCM W35H = CCT: 3500K, CRI (Ra): 90+, Colour Consistency: 2SDCM
Weight	TBC
Material	Fixture: machined marine-grade aluminum with tempered glass.
Supplied with	TBC
Warranty & LED Life	5 years limited warranty. Estimated useful life of LED is 50,000 hours.

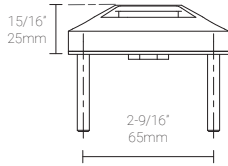
Ordered Separately

System Components	Enclosure box: remote driver Please consult factory or visit Recommended Drivers for available driver options. Please consult factory or visit Marine Enclosure Boxes for available enclosure box options.
-------------------	---

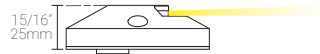
Mounting Options & Dimensions

LED Dimensions

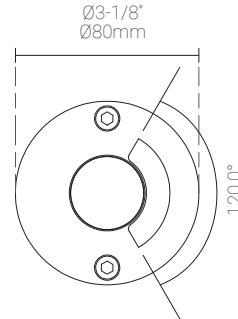
Fixture



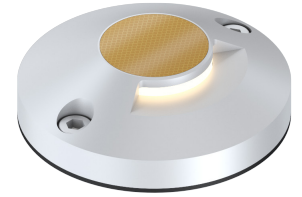
Side View



Top View

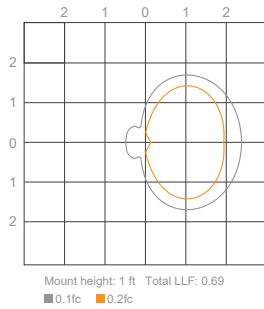


3D View

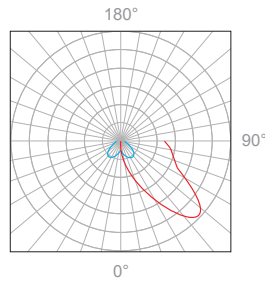


1W, 2700K, 90+ CRI

Polar Candela Distribution



Isofootcandle Plot



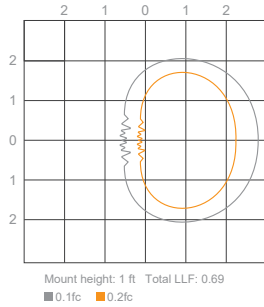
Illuminance at a Distance

Distance		Center Beam fc	Beam Width			
1.5ft	0.46m	0fc	4.1ft	1.25m	1.3ft	0.39m
3.0ft	0.91m	0fc	8.1ft	2.47m	2.6ft	0.79m
4.5ft	1.37m	0fc	12.2ft	3.72m	3.9ft	1.19m
6.0ft	1.83m	0fc	16.2ft	4.98m	5.2ft	1.58m
7.5ft	2.29m	0fc	20.3ft	6.18m	6.6ft	2.01m
9.0ft	2.74m	0fc	24.3ft	7.40m	7.9ft	2.41m

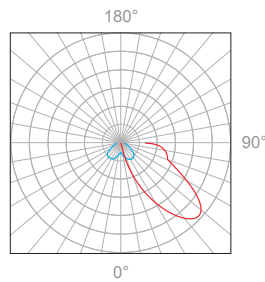
Delivered Lumen: 5.8lm
 ■ Vertical Beam Spread : 107°
 ■ Horizontal Beam Spread : 47.2°

2W, 2700K, 90+ CRI

Polar Candela Distribution



Isofootcandle Plot



Illuminance at a Distance

Distance		Center Beam fc	Beam Width			
1.5ft	0.46m	0fc	3.5ft	1.06m	1.1ft	0.33m
3.0ft	0.91m	0fc	6.9ft	2.10m	2.2ft	0.67m
4.5ft	1.37m	0fc	10.4ft	3.17m	3.3ft	1.00m
6.0ft	1.83m	0fc	13.8ft	4.20m	4.4ft	1.34m
7.5ft	2.29m	0fc	17.3ft	5.27m	5.5ft	1.67m
9.0ft	2.74m	0fc	20.7ft	6.30m	6.6ft	2.01m

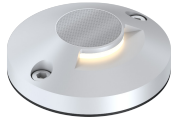
Delivered Lumen: 11lm
 ■ Vertical Beam Spread : 98.1°
 ■ Horizontal Beam Spread : 40.5°

Appendix

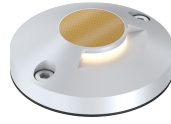
Finishes



MA matte chrome anodized
RED red reflective marker



MA matte chrome anodized
WHI white reflective marker



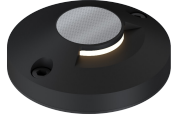
MA matte chrome anodized
YEL yellow reflective marker



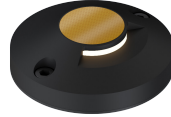
MA matte chrome anodized
NR no reflector



BK black powder coated
RED red reflective marker



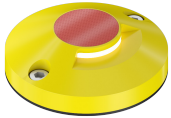
BK black powder coated
WHI white reflective marker



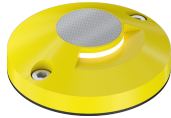
BK black powder coated
YEL yellow reflective marker



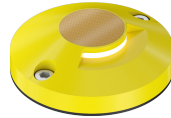
BK black powder coated
NR no reflector



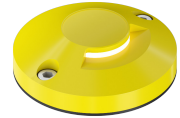
SYE safety yellow
RED red reflective marker



SYE safety yellow
WHI white reflective marker



SYE safety yellow
YEL yellow reflective marker



SYE safety yellow
NR no reflector