

# SDF010

INTERIOR  
Single Rail | Standoff

● Dry location



## Ordering Information

Clear Form

Date :  
Project :  
Type :

Quantity :  
Note :

## Specifications

Standoff | Example Code: SDF010-MC

Product	Finish <sup>1</sup>
SDF010	MC matte chrome BN brushed nickel

## Important Notes

Specification  
1. Refer to Appendix or MP Lighting website for track system with different finish options.

## Application

Environment	Dry Location approved. IP 20.
Mounting	For Single Rail Mounting. Suggested spacing: 1" (305mm) from ends and 3" (914mm) on center.
Compatible Fixtures	L225M, L72, L73, P02, P11, P96, P96L, X01, X06, X31, X42, X45, X51.

## Electrical

Electrical	N/A
------------	-----

## Construction

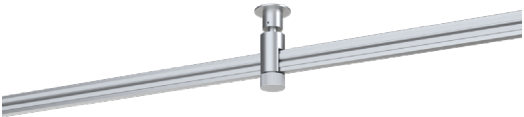
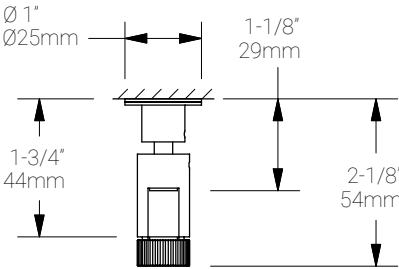
Weight	N/A
Material	Machined aluminum with electroplated finish.

Mounting Options & Dimensions

Dimensions

Front View

3D View



Appendix



MC matte chrome



BN brushed nickel