

# X02SR

## INTERIOR

Spotlight | For ceilings, walls & counters

- Dry location



### Ordering Information

Clear Form

Date : \_\_\_\_\_

Quantity : \_\_\_\_\_

Project : \_\_\_\_\_

Note : \_\_\_\_\_

Type : \_\_\_\_\_

### Specifications

**Luminaire** | Example Code: X02-SR-1-MC

Product	Mounting	Stem Length	Finish <sup>1</sup>
<b>X02</b>	<b>SR</b>		
	SR single rail	1 = 1" (25mm) X custom <sup>2</sup>	<b>Aluminum Finishes:</b> MC matte chrome

### System Components (Ordered Separately)

Remote Driver : \_\_\_\_\_

\* Consult MP Lighting Website or Factory.

### Important Notes

#### Specification

1. Refer to Appendix or MP Lighting website for complete look of luminaire with different finish options.
2. Available in 1" (25mm) increments, maximum length 96" (2438mm).

#### Warranty Notes & Disclaimer

Malfunction and damage to product due to incompatible dimming system or misuse will not be covered under warranty. Consult MP Lighting for recommended drivers. If the fixture has an option to be installed with a dimming control system, consult a dimming system manufacturer with minimum load before installing. MP Lighting reserves the right, at its sole discretion, at any time and without notice, to make design changes to any of our products. Consult MP Lighting website for most updated documentation.

# X02SR

## INTERIOR

Spotlight | For ceilings, walls & counters

- Dry location



### Application

Environment	Dry Location approved. IP 20.
Mounting	<b>SR:</b> Rotatable and easy to position. Designed for use on MP single rail (SR) rail system (sold separately).

### Luminaire Construction

LED Light Source	Lamp supplied by others. <b>Recommended:</b> MR16, 50 W max or LED MR16 (SORAA lamp) 10W max.
Weight	N/A
Material	<b>Fixture:</b> Machined aluminum with electroplated finish.
Supplied with	<b>Standard installation housing:</b> Comes with an adapter plate, two #8-32 screws, and wire nuts.
Warranty & LED Life	5 years limited warranty. Estimated useful life of LED is 50,000 hours.

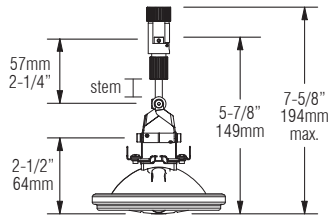
### Ordered Separately

System Components	Lamp.
-------------------	-------

## Mounting Options & Dimensions

### LED Fixture Dimensions

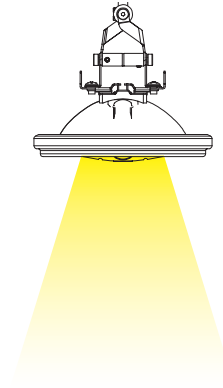
Fixture



3D View

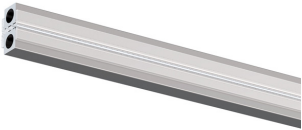


Beam (with lamp supplied by others)



### SR

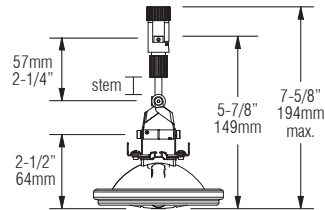
Single Rail



Fixture with Single Rail



Dimensions



## Appendix

### Aluminum Finishes



MC matte chrome