

[>]AMPLIGHTING

MARINE PRODUCT OVERVIEW



SUMMARY



[M] MPLIGHTING

MP Lighting is a lighting manufacturing company head quartered in Vancouver, BC, committed to producing sophisticated luminaires that merge contemporary design and European-inspired aesthetics.

Since its establishment in 1994, MP Lighting has grown and developed its portfolio to include a variety of indoor- and outdoor-rated luminaires that can be used for any space. This catalogue includes a selection of luminaires that can be used for boats, yachts, and other vessels, as well as for adjacent structures, such as marinas, docks, gangways, and coastal homes.

IN-GRADE	6
M07	6
M338	7
M340	8
M342	9
M348	10
CABINET	11
M51	11
M52	12
M67	13
M500	14
M501	15
M502	16
M508	17
M517	18
M550	19
WINE RACK SYSTEM	20
M182	20
WALL-MOUNT	21
M47	21
SPOTLIGHT	22
M730	22
SAFETY LIGHT	23
M960	23
FINISHES & TECHNOLOGY	24

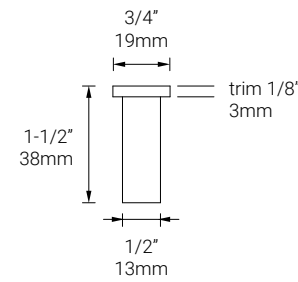
M07

Wet, Damp, and Dry Location approved | IP 68

- ✓ ADA-compliant
- ✓ WELL standard – Feature 58: Color Quality
- ✓ Made with machined stainless steel (316) and tempered glass



- Mounting** Designed to be mounted directly into surfaces.
- Power Supplies** Only 12VC optional dimming.
- Control** **On/off control**
Dimming: 0-10V dimming with appropriate driver.
Other options (consult factory): Casambi.
- Supplied With** 6" (152mm) factory-installed wire lead and driver.
- Warranty & LED Life** 5 years limited warranty.
Estimated useful life of LED is 50,000 hours.



- Wattage** 0.2W
- CCT & CRI** 2200K 80+
2700K 90+
3000K 90+
3500K 90+
4100K 90+
amber light
- Lens** clear
frosted
- Trim Finish** stainless steel 316

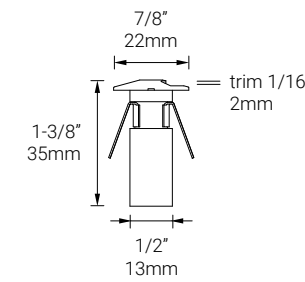
M338

Wet, Damp, and Dry Location approved | IP 68

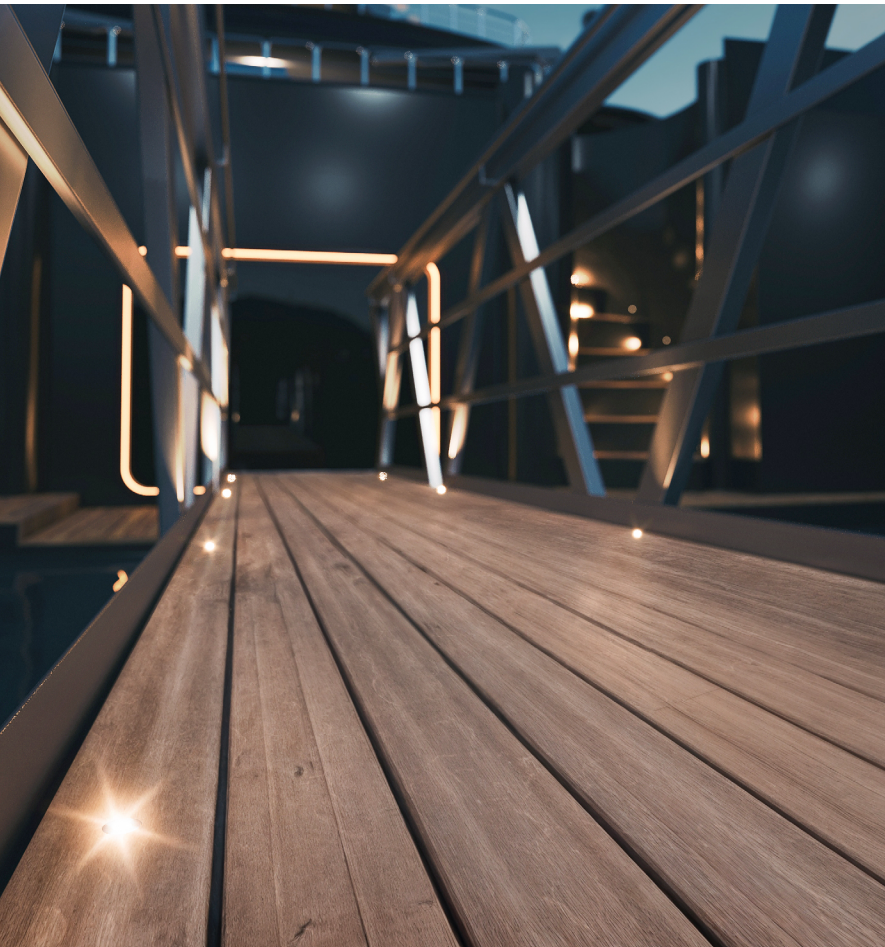
- ✓ ADA-compliant
- ✓ WELL standard – Feature 58: Color Quality
- ✓ Made with machined aluminum or machined stainless steel (316)



- Mounting** Designed to be mounted directly into outdoor surfaces with spring clips.
- Power Supplies** Only 12VC optional dimming.
- Control** **On/off control**
Dimming: 0-10V dimming with appropriate driver.
Other options (consult factory): Casambi.
- Supplied With** Spring clips and driver.
- Warranty & LED Life** 5 years limited warranty.
Estimated useful life of LED is 50,000 hours.



- Wattage** 0.2W
- CCT & CRI** 2200K 80+
2700K 90+
3000K 90+
3500K 90+
4100K 90+
- Lens** clear
frosted
- Aperture** single
- Trim Finish** matte clear anodized
black anodized
stainless steel 316



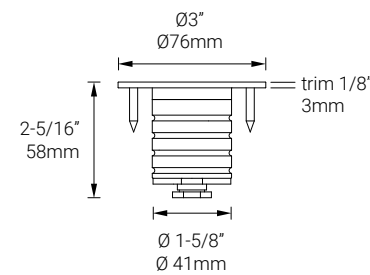
M340

Wet, Damp, and Dry Location approved | IP 68

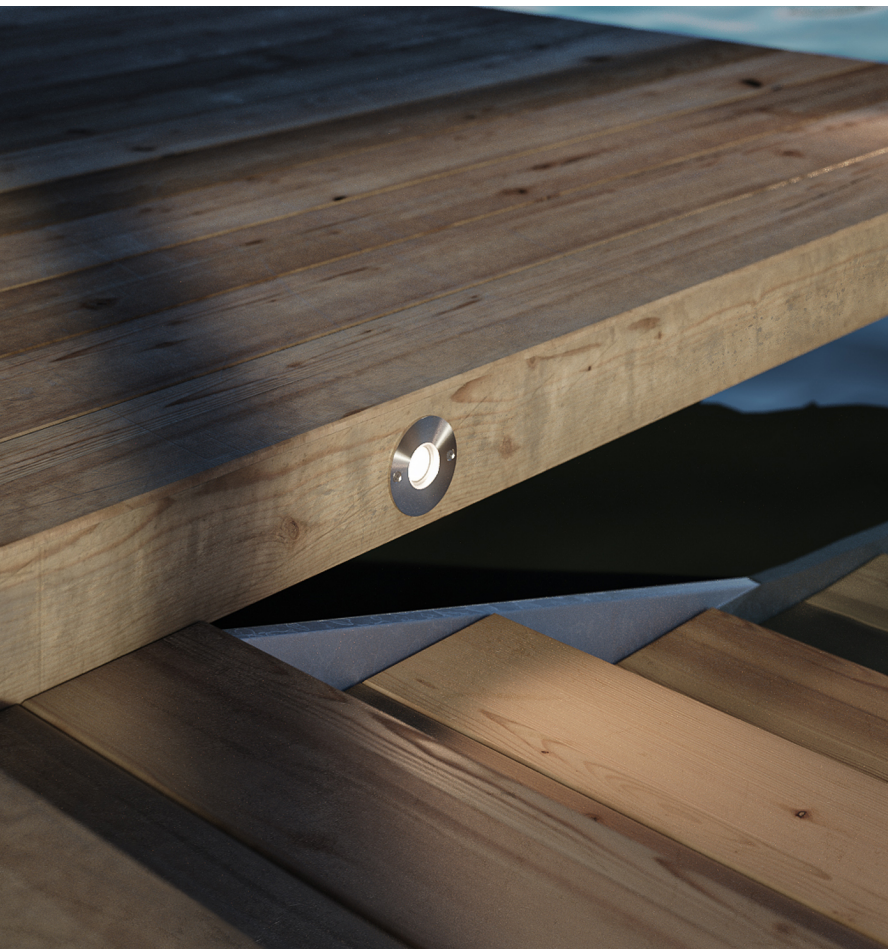
- ✓ ADA-compliant
- ✓ WELL standard – Feature 58: Color Quality
- ✓ Made with machined stainless steel (316)



Drive Over Rating	9,700 lbs (4,400 kg)
Mounting	Designed to be inserted into surfaces and secured with two screws (included).
Power Supplies	Remote LED drivers (converter driver from constant voltage output to constant current output, 350mA to 700mA): Fixtures to be wired in series.
Control	On/off control Dimming: 0-10V dimming with appropriate driver. Other options (consult factory): Casambi.
Supplied With	Two pointed end self-tapping #8-32 screws, 6" (152mm) factory-installed wire lead.
Warranty & LED Life	5 years limited warranty. Estimated useful life of LED is 50,000 hours.



Wattage	1W 2W
CCT & CRI	2200K 80+ 2700K 90+ 3000K 90+ 3500K 90+ 4100K 90+
Beam Angle	elliptical 7°+36° super spot 8° spot 12° narrow flood 30° flood 45° wide flood 120°
Lens	clear frosted clear anti-slip frosted anti-slip
Accessories (optional)	louver, matte anodized louver, black anodized hex louver, matte anodized hex louver, black anodized angled louver, black anodized straight louver, black anodized square louver, black anodized ring louver, black anodized
Internal Angle Bracket	no angle 15° angle custom
Trim Finish	stainless steel 316



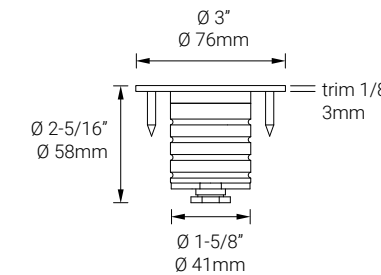
M342

Wet, Damp, and Dry Location approved | IP 68

- ✓ ADA-compliant
- ✓ WELL standard – Feature 58: Color Quality
- ✓ Made with machined stainless steel (316)



Mounting	Designed to be inserted into surfaces and secured with two screws (included).
Power Supplies	Remote LED drivers (converter driver from constant voltage output to constant current output, 350mA to 700mA): Fixtures to be wired in series.
Control	On/off control Dimming: 0-10V dimming with appropriate driver. Other options (consult factory): Casambi.
Supplied With	Two pointed end self-tapping #8-32 screws, 6" (152mm) factory-installed wire lead, and driver.
Warranty & LED Life	5 years limited warranty. Estimated useful life of LED is 50,000 hours.



Wattage	1W 2W
CCT & CRI	2200K 80+ 2700K 90+ 3000K 90+ 3500K 90+ 4100K 90+
Beam Angle	spot 12° narrow flood 30° flood 45° wide flood 120°
Lens	clear frosted
Accessories (optional)	louver, matte anodized louver, black anodized hex louver, matte anodized hex louver, black anodized angled louver, black anodized straight louver, black anodized square louver, black anodized ring louver, black anodized
Internal Angle Bracket	no angle 15° angle custom
Trim Finish	stainless steel 316



M348

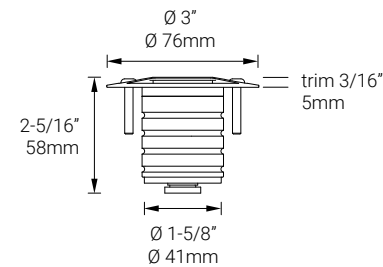
Wet, Damp, and Dry Location approved | IP 68

- ✓ ADA-compliant
- ✓ WELL standard – Feature 58: Color Quality
- ✓ Made with machined stainless steel (316)



shown with S (single aperture) shown with D (double aperture)

Drive Over Rating	9,700 lbs (4,400 kg).
Mounting	Designed to be inserted into the surface and secured with two screws (included).
Power Supplies	Remote LED drivers (converter driver from constant voltage output to constant current output, 350mA to 700mA): Fixtures to be wired in series.
Control	On/off control Dimming: 0-10V dimming with appropriate driver. Other options (consult factory): Casambi.
Supplied With	Two pointed end self-tapping #8-32 screws, and 6" (152mm) factory-installed wire lead.
Warranty & LED Life	5 years limited warranty. Estimated useful life of LED is 50,000 hours.

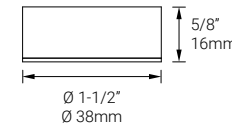


M51

Dry Location approved | IP 40

- ✓ ADA-compliant
- ✓ WELL standard – Feature 58: Color Quality
- ✓ Made with machined marine-grade aluminum

Mounting	Surface mounts with screws.
Power Supplies	Remote LED drivers (converter driver from constant voltage output to constant current output, 350mA to 700mA): Fixtures to be wired in series.
Control	On/off control Dimming: 0-10V dimming with appropriate driver. Other options (consult factory): Casambi.
Supplied With	Cross countersunk screws (#4 screw - 3/8" included), 2' (610mm) wire lead, and driver.
Warranty & LED Life	5 years limited warranty. Estimated useful life of LED is 50,000 hours.



Wattage	1W 2W
CCT & CRI	2200K 80+ 2700K 90+ 3000K 90+ 3500K 90+ 4100K 90+
Aperture	single double
Trim Finish	stainless steel 316

Wattage	1W 2W
CCT & CRI	2200K 80+ 2700K 90+ 3000K 90+ 3500K 90+ 4100K 90+
Beam Angle	spot 12° narrow flood 30° flood 45° wide flood 120°
Shrouds	no accessories full shroud half shroud angled shroud
Finish	matte clear anodized black anodized



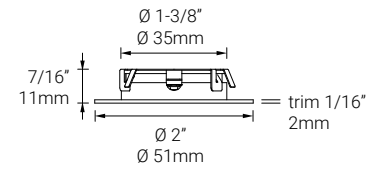
M52

● Dry Location approved | IP 40

- ✓ ADA-compliant
- ✓ WELL standard – Feature 58: Color Quality
- ✓ Made with machined marine-grade aluminum or antique bronze



shown with F (friction spring clips)



Mounting	F: Recessed mount to surfaces with friction fit spring clip. C: Recessed mount to surfaces with coil spring clip.
Power Supplies	Remote LED drivers (converter driver from constant voltage output to constant current output, 350mA to 700mA); Fixtures to be wired in series.
Control	On/off control Dimming: 0-10V dimming with appropriate driver. Other options (consult factory): Casambi.
Supplied With	Friction fit spring clip or coil spring clip, 2' (610mm) wire lead, and driver.
Warranty & LED Life	5 years limited warranty. Estimated useful life of LED is 50,000 hours.

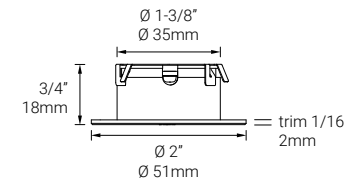
M67

● Dry Location approved | IP 40

- ✓ ADA-compliant
- ✓ WELL standard – Feature 58: Color Quality
- ✓ Made with machined marine-grade aluminum



shown with F (friction spring clips)



Mounting	F: Recessed mount to surfaces with friction fit spring clip. C: Recessed mount to surfaces with coil spring clip.
Power Supplies	Remote LED drivers (converter driver from constant voltage output to constant current output, 700mA); Fixtures to be wired in series.
Control	On/off control Dimming: 0-10V dimming with appropriate driver. Other options (consult factory): Casambi.
Supplied With	Friction fit spring clip or coil spring clip, 2' (610mm) wire lead, and driver.
Warranty & LED Life	5 years limited warranty. Estimated useful life of LED is 50,000 hours.



Mounting	friction spring clips coil spring clips
Wattage	1W 2W
CCT & CRI	2200K 80+ 2700K 90+ 3000K 90+ 3500K 90+ 4100K 90+ warm dimming
Beam Angle <i>*warm dimming only</i>	spot 12° narrow flood 30° flood 45° wide flood 120° *flood 56° *wide flood 83°
Accessories <i>*not available with WD warm dimming</i>	no accessories full shroud half shroud angled shroud long black shroud*
Finish	matte clear anodized black anodized bronze powder coat white powder coat antique bronze

Mounting	friction spring clips coil spring clips
Wattage	2W
CCT & CRI	2200K 80+ 2700K 90+ 3000K 90+ 3500K 90+ 4100K 90+
Beam Angle	spot 12° narrow flood 30° flood 45° wide flood 75°
Finish	silver glass black glass white glass



M500

● Dry Location approved | IP 40

- ✓ ADA-compliant
- ✓ WELL standard – Feature 58: Color Quality
- ✓ Made with solid anodized aluminum

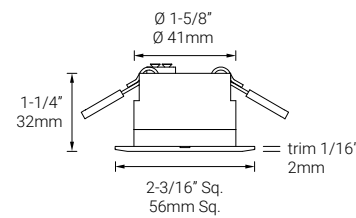


M501

● Dry Location approved | IP 40

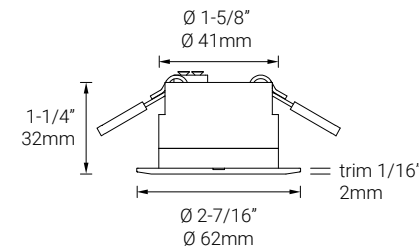
- ✓ ADA-compliant
- ✓ WELL standard – Feature 58: Color Quality
- ✓ Made with solid anodized aluminum

- Mounting** Recessed mount to surfaces with coil spring clip.
- Power Supplies** Remote LED drivers (converter driver from constant voltage output to constant current output, 700mA):
Fixtures to be wired in series.
- Control** **On/off control**
Dimming: 0-10V dimming with appropriate driver.
Other options (consult factory): Casambi.
- Supplied With** Universal crossbar, mounting screws (2), and driver.
- Warranty & LED Life** 5 years limited warranty.
Estimated useful life of LED is 50,000 hours.



- Wattage** 2W
- CCT & CRI** 2200K 80+
2700K 90+
3000K 90+
3500K 90+
4100K 90+
- Beam Angle** spot 12°
narrow flood 30°
flood 45°
- Finish** matte clear anodized
black anodized
bronze powder coated

- Mounting** Recessed mount to surfaces with coil spring clip.
- Power Supplies** Remote LED drivers (converter driver from constant voltage output to constant current output, 700mA):
Fixtures to be wired in series.
- Control** **On/off control**
Dimming: 0-10V dimming with appropriate driver.
Other options (consult factory): Casambi.
- Supplied With** Universal crossbar, mounting screws (2), and driver.
- Warranty & LED Life** 5 years limited warranty.
Estimated useful life of LED is 50,000 hours.



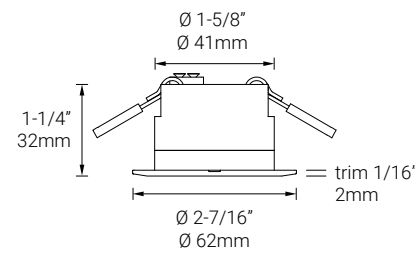
- Wattage** 2W
- CCT & CRI** 2200K 80+
2700K 90+
3000K 90+
3500K 90+
4100K 90+
- Beam Angle** spot 12°
narrow flood 30°
flood 45°
- Finish** matte clear anodized
black anodized
bronze powder coated
white powder coated
antique bronze



M502

● Dry Location approved | IP 40

- ✓ ADA-compliant
- ✓ WELL standard – Feature 58: Color Quality
- ✓ Made with solid anodized aluminum



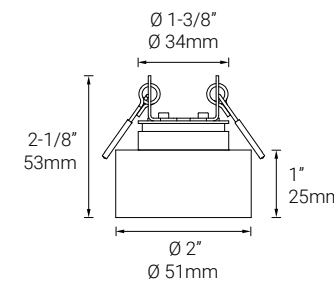
- Mounting** Recessed mount to surfaces with coil spring clip.
- Power Supplies** Remote LED drivers (converter driver from constant voltage output to constant current output, 700mA): Fixtures to be wired in series.
- Control** **On/off control**
Dimming: 0-10V dimming with appropriate driver.
Other options (consult factory): Casambi.
- Supplied With** Universal crossbar, mounting screws (2), and driver.
- Warranty & LED Life** 5 years limited warranty.
Estimated useful life of LED is 50,000 hours.



M508

● Dry Location approved | IP 40

- ✓ ADA-compliant
- ✓ WELL standard – Feature 58: Color Quality
- ✓ Made with solid anodized aluminum



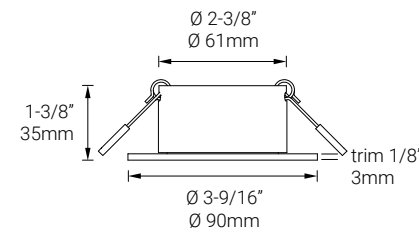
- Wattage** 1W
2W
- CCT & CRI** 2200K 80+
2700K 90+
3000K 90+
3500K 90+
4100K 90+
- Beam Angle** spot 12°
narrow flood 30°
flood 45°
- Finish** matte clear anodized
black anodized



M517

● Dry Location approved | IP 40

- ✓ ADA-compliant
- ✓ WELL standard – Feature 58: Color Quality
- ✓ Made with solid anodized aluminum

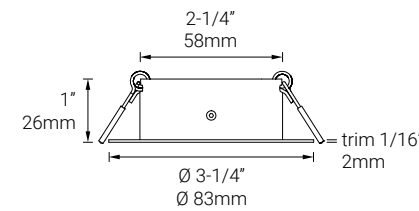


- Mounting** Recessed mount to surfaces with coil spring clip.
- Power Supplies** Remote LED drivers (converter driver from constant voltage output to constant current output, 350mA):
Fixtures to be wired in series.
- Control** **On/off control**
Dimming: 0-10V dimming with appropriate driver.
Other options (consult factory): Casambi.
- Supplied With** Friction fit spring clip or coil spring clip, 2'(610mm) wire lead, and driver.
- Warranty & LED Life** 5 years limited warranty.
Estimated useful life of LED is 50,000 hours.

M550

● Dry Location approved | IP 40

- ✓ ADA-compliant
- ✓ WELL standard – Feature 58: Color Quality
- ✓ Made with solid anodized aluminum



- Mounting** Recessed mount to surfaces with coil spring clip.
- Power Supplies** Remote LED drivers (converter driver from constant voltage output to constant current output, 700mA):
Fixtures to be wired in series.
- Control** **On/off control**
Dimming: 0-10V dimming with appropriate driver.
Other options (consult factory): Casambi.
- Supplied With** Universal crossbar, mounting screws (2), and driver.
- Warranty & LED Life** 5 years limited warranty.
Estimated useful life of LED is 50,000 hours.



- Mounting** coil spring clip
- Wattage** 4W
- CCT & CRI** 2700K 90+
3000K 90+
- Beam Angle** spot 12°
narrow flood 15°
flood 26°
wide flood 45°
- Accessories** no accessories
metal shroud, silver
metal shroud, black
- Finish** matte clear anodized
black anodized
bronze powder coated
white powder coated

- Wattage** 2W
- CCT & CRI** 2200K 80+
2700K 90+
3000K 90+
3500K 90+
4100K 90+
- Beam Angle** spot 12°
narrow flood 30°
flood 45°
- Reflector Finish** black
white
matte clear anodized
bronze powder coated
- Louver (optional)** eggcrate louver, black anodized
- Accessories** no accessories
full shroud
- Finish** matte clear anodized
black anodized
bronze powder coated
white powder coated



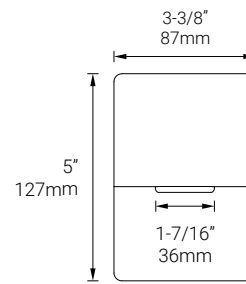
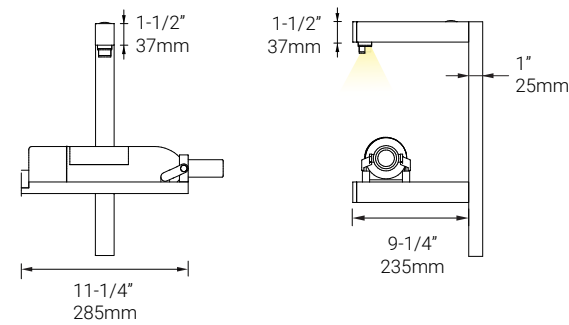
M182

● Dry Location approved | IP 40

- ✓ ADA-compliant
- ✓ WELL standard – Feature 58: Color Quality
- ✓ Made with black anodized or bronze powder coated aluminum



- Mounting** **Wall Mount:** Can be mounted directly to walls, up to 8ft (2.44m) maximum. Please contact factory for custom lengths that are taller than 8ft (2.44m).
Floor-to-Ceiling Mount: Can be mounted freely from ceiling to floor – Mounting bracket (WR-MB, sold separately). Up to 8ft (2.44m) maximum.
- Power Supplies** Remote LED drivers (converter driver from constant voltage output to constant current output, 350mA): Fixtures to be wired in series.
- Control** **On/off control**
Dimming: 0-10V dimming with appropriate driver.
Other options (consult factory): Casambi.
- Warranty & LED Life** 5 years limited warranty.
Estimated useful life of LED is 50,000 hours.



Rail	RAL-182
Fixture Length	custom (by foot)
Optional	end cap mounting bracket* <small>*only available with Floor-to-Ceiling mounting option</small>
Wattage	1W
CCT & CRI	2200K 80+ 2700K 90+ 3000K 90+ 3500K 90+ 4100K 90+
Beam Angle	spot 12° narrow flood 30° flood 45°
Accessories	no accessories angled shroud full shroud half shroud
Cross Bar	single front view with strap double front view with strap
Finish	black anodized

M47

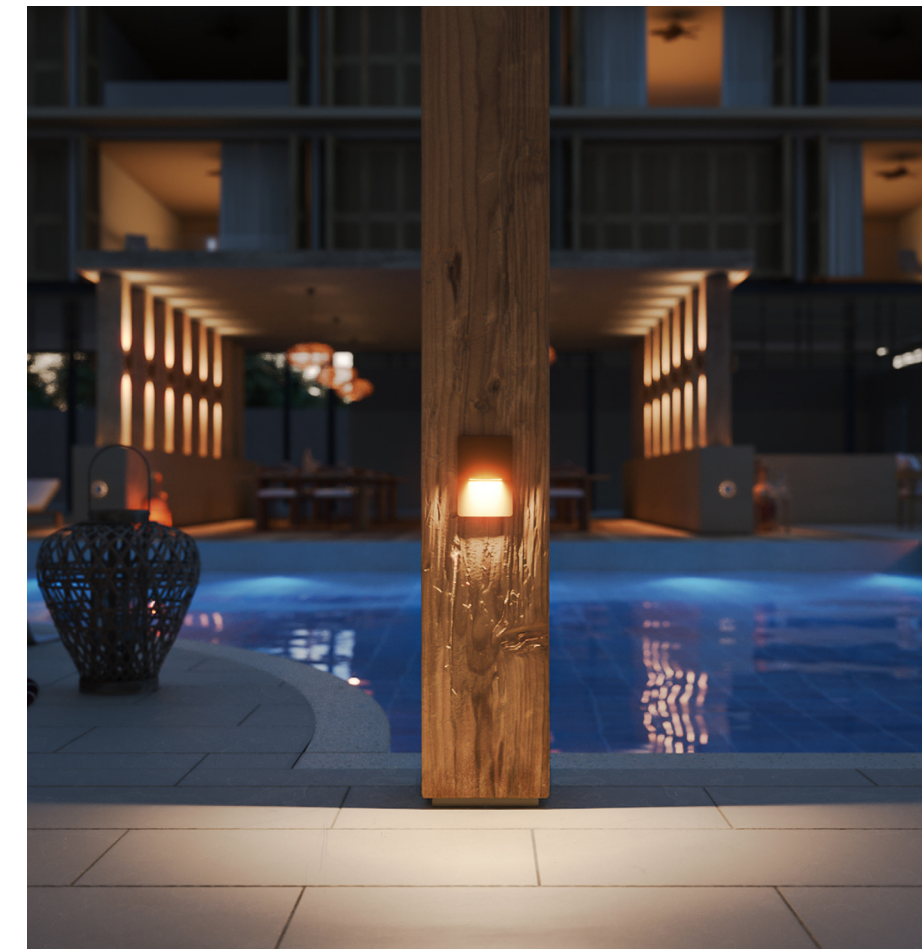
● Wet, Damp, and Dry Location approved | IP 66

- ✓ ADA-compliant
- ✓ WELL standard – Feature 58: Color Quality
- ✓ B.U.G. – 0/0/0
- ✓ Made with machined stainless steel (316) or machined marine-grade aluminum



- Mounting** Mounts to horizontal single gang box (ordered separately).
Box opening: width | 2-3/8" (60.33mm) x height | 2" (50.8mm).
- Power Supplies** Remote LED drivers (converter driver from constant voltage output to constant current output, 350mA to 700mA): Fixtures to be wired in series.
- Control** **On/off control**
Dimming: 0-10V dimming with appropriate driver.
Other options (consult factory): Casambi.
- Supplied With** Non-dimmable integral driver.
- Warranty & LED Life** 5 years limited warranty.
Estimated useful life of LED is 50,000 hours.

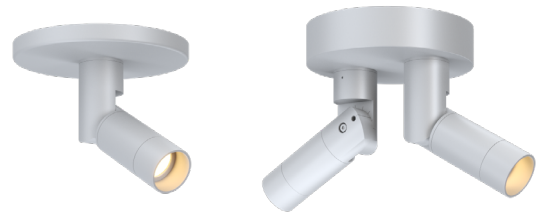
Wattage	3W 6W
CCT & CRI	2200K 80+ 2700K 90+ 3000K 90+ 3500K 90+ 4100K 90+
Engraving <small>(optional)</small>	custom engraving
Finish	matte clear anodized black powder coated bronze powder coated white powder coated stainless steel 316



M730

Wet, Damp, and Dry Location approved | IP 66

- ✓ ADA-compliant
- ✓ WELL standard – Feature 58: Color Quality
- ✓ Made with machined marine-grade aluminum or stainless steel (316)

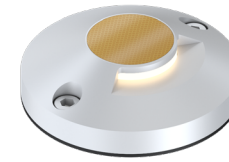


shown with S (single spotlight) shown with D (double spotlights)

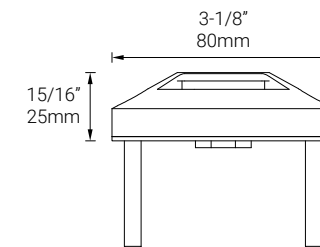
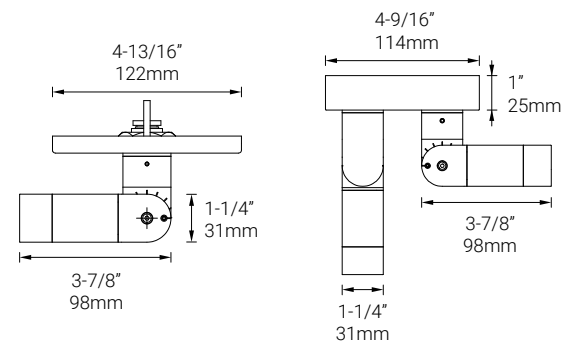
M960

Wet, Damp, and Dry Location approved | IP 68

- ✓ ADA-compliant
- ✓ WELL standard – Feature 58: Color Quality
- ✓ Made with machined marine-grade aluminum and tempered glass



Mounting	B4: mounts to standard 4" octagonal back box. B5: mounts to standard 4" octagonal back box.
Power Supplies	Remote LED drivers (converter driver from constant voltage output to constant current output, 350mA to 700mA); Fixtures to be wired in series.
Control	On/off control Dimming: 0-10V dimming with appropriate driver. Other options (consult factory): Casambi.
Supplied With	Canopy, a universal crossbar, two hex socket head screws, and two wire-nuts.
Warranty & LED Life	5 years limited warranty. Estimated useful life of LED is 50,000 hours.

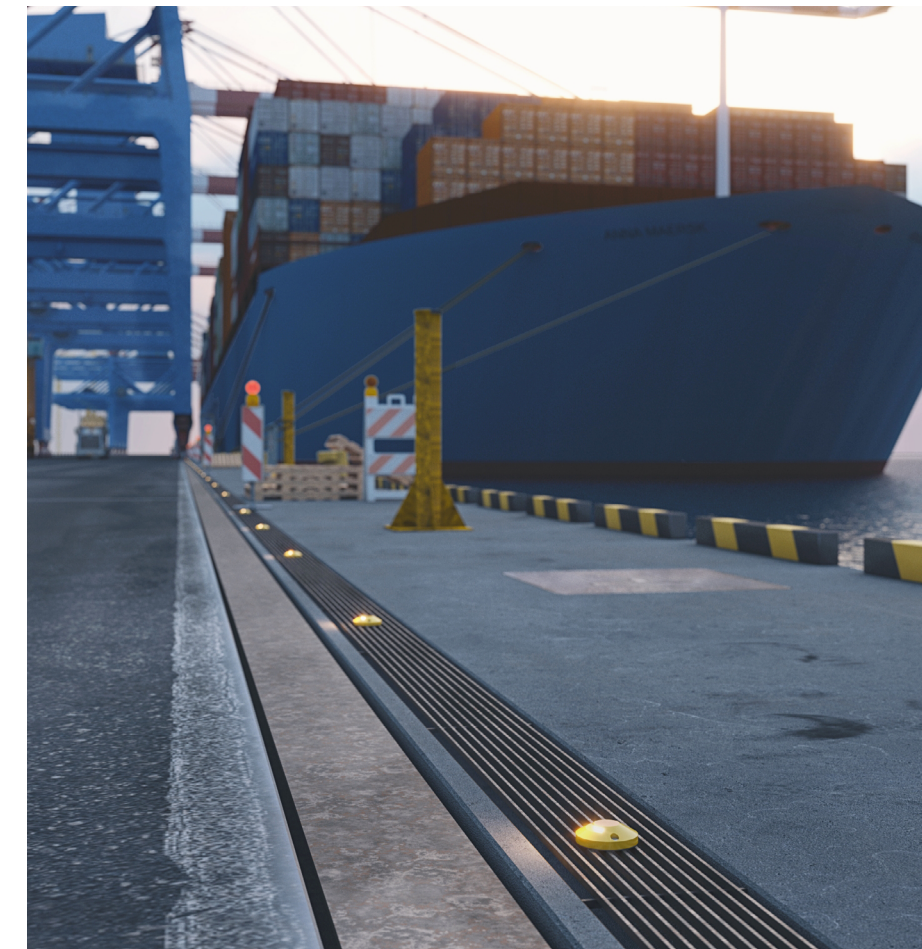


Drive Over Rating	9,700 lbs (4,400 kg).
Mounting	Designed to be mounted onto surfaces with two screws or attached to bar grates with included hardware.
Power Supplies	Remote LED drivers (converter driver from constant voltage output to constant current output, 350mA to 700mA); Fixtures to be wired in series.
Control	On/off control Dimming: 0-10V dimming with appropriate driver. Other options (consult factory): Casambi.
Warranty & LED Life	5 years limited warranty. Estimated useful life of LED is 50,000 hours.



Canopy	B4 (only available with single spotlight) B5 (only available with double spotlights)
Wattage	1W 2W
# of Spotlights	single double
CCT & CRI	2200K 80+ 2700K 90+ 3000K 90+ 3500K 90+ 4100K 90+ amber lighting
Beam Angle	spot 12° narrow flood 30°
Accessories	eggcrate louver, black anodized
Shroud	full shroud wet location weep shroud
Finish	matte clear anodized black anodized bronze powder coated white powder coated

Wattage	1W 2W
CCT & CRI	2200K 80+ 2700K 90+ 3000K 90+ 3500K 90+
Reflective Marker Finish	red white yellow no reflector
Finish	matte clear anodized black powder coated safety yellow



FINISHES

Brochure with finish samples available upon request.

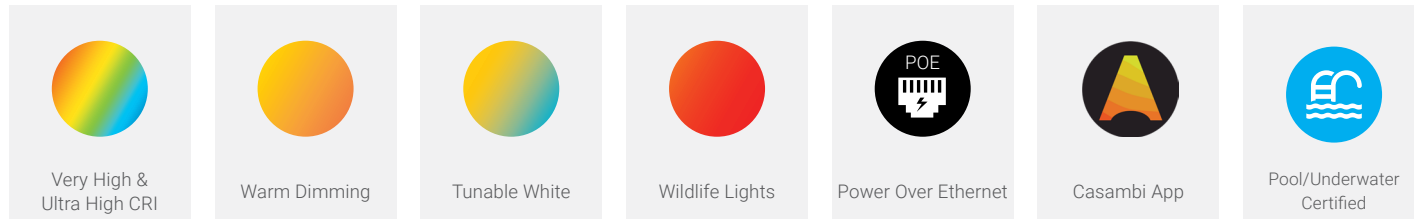
Aluminum Finishes:



Stainless Steel & Other Finishes:

TECHNOLOGY

LED Technology



Smart Control Compatibility

Pool Certification



HEAD OFFICE

16 WEST 4TH AVENUE
VANCOUVER – BC V5Y 1G3
CANADA

info@mplighting.com
www.mplighting.com

t 604 708 1184
tf 1 877 708 1184

© 2026 MP Lighting

FOLLOW MP LIGHTING ON SOCIAL MEDIA



MP Lighting on Archello



@mp_lighting on Instagram



MP Lighting on Pinterest

