



LED INTEGRATED

WINE RACK SYSTEM

HIGH-QUALITY LED INTEGRATION

- No heat
- No UV emissions
- Even illumination
- No impact on wine quality
- Safe in refrigerated environments

MP Lighting's wine rack system is designed to highlight and showcase without compromising the central element of your display — the quality of the wine on exhibit.



FEATURES

Flexible configurations

Specifiable spacing between columns

Specifiable spacing between rows

6 bottle holder options

Time-saving installation

Even bottle illumination

Enabled by 1W LED light integrated in each arm

High quality materials & components

Close-to-zero heat & no UV emitted from LEDs

Materials that withstand refrigerated storages



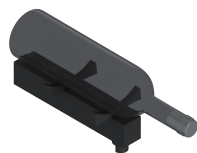
The sleek modular wine rack system is designed to complement your space and add the perfect amount of lighting to your wine display. The L182 and L183 fixtures allow you to create a beautiful lighting over bottles of wine without emitting any UV light and barely any heat.

We recommend adding the wine rack in kitchens, wine cellars, cabinets and walls. Its highly customizable nature can be both space efficient and a stand out piece. This product can be either wall-mounted or floor-to-ceiling mounted.

BOTTLE HOLDER & COLUMN OPTIONS



L182 in black



1A: Single Cork View



2A: double cork view



V: vertical view



L183 in black
(single sided)



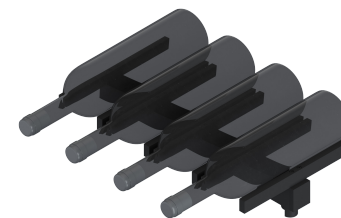
L183 in black
(double sided)



1B: Single Label View



2B: Double Label View



4B: Quadruple Label View



PROJECT SPECS:

L182, wall mounted,
2B arms, in black.

PROJECT SPECS:

L183, floor-to-ceiling mounted,
4B arms, double-sided, in black.

FAQ



1. How can the fixture be mounted?

The L182 is meant for wall applications and the L183 is meant for floor to ceiling applications.

2. How tall can the fixture be?

The L182 can be up to 8' tall and the L183 can be up to 12' tall.

3. What finishes are available?

The L182 and L183 systems are available in black.

4. What is the suggested spacing between arms?

Our suggested spacing is 9" to 12" apart, but the distance between the arms can be as close together or as far apart as you would like. A wine rack can have up to 12 arms with a light on each column.

5. What is the closest on center spacing that columns can be placed?

Closest on center spacing for 1B and 2B arms is 14" apart.

6. Can I use different arm types on one support rail?

Yes! You can use different arms on one column.

7. What are the accessories? Why would I use a full shroud or half shroud accessory?

The shroud accessories are meant to reduce glare. They are included with every arm that has an LED light. Typically, we supply the HS (half shroud) for wall mounted wine racks, and the FS (full shroud) for floor-to-ceiling mounted wine racks. The presence of reflective surfaces is what dictates the need (or lack thereof) for the shrouds and their type.

8. Can I place this in a refrigerated display?

The integrated LEDs can be covered by the MP Lighting special coating, which protects the LEDs from environmental impacts such as water damage, high salt content damage, and more. For this special coating, please consult our factory for more information.

9. Does the display have any impact on the wine quality?

No, as there are no UV rays and next to no heat – a top concern when storing wine.



HEAD OFFICE

16 WEST 4TH AVENUE
VANCOUVER BC V5Y 1G3

info@mplighting.com
www.mplighting.com

t 604 708 1184
tf 1 877 708 1184

For more information on MP Lighting products,
please contact the Head Office.

FOLLOW MP LIGHTING ON SOCIAL MEDIA.



MP Lighting on Archello



@mp_lighting on Instagram



MP Lighting on Pinterest